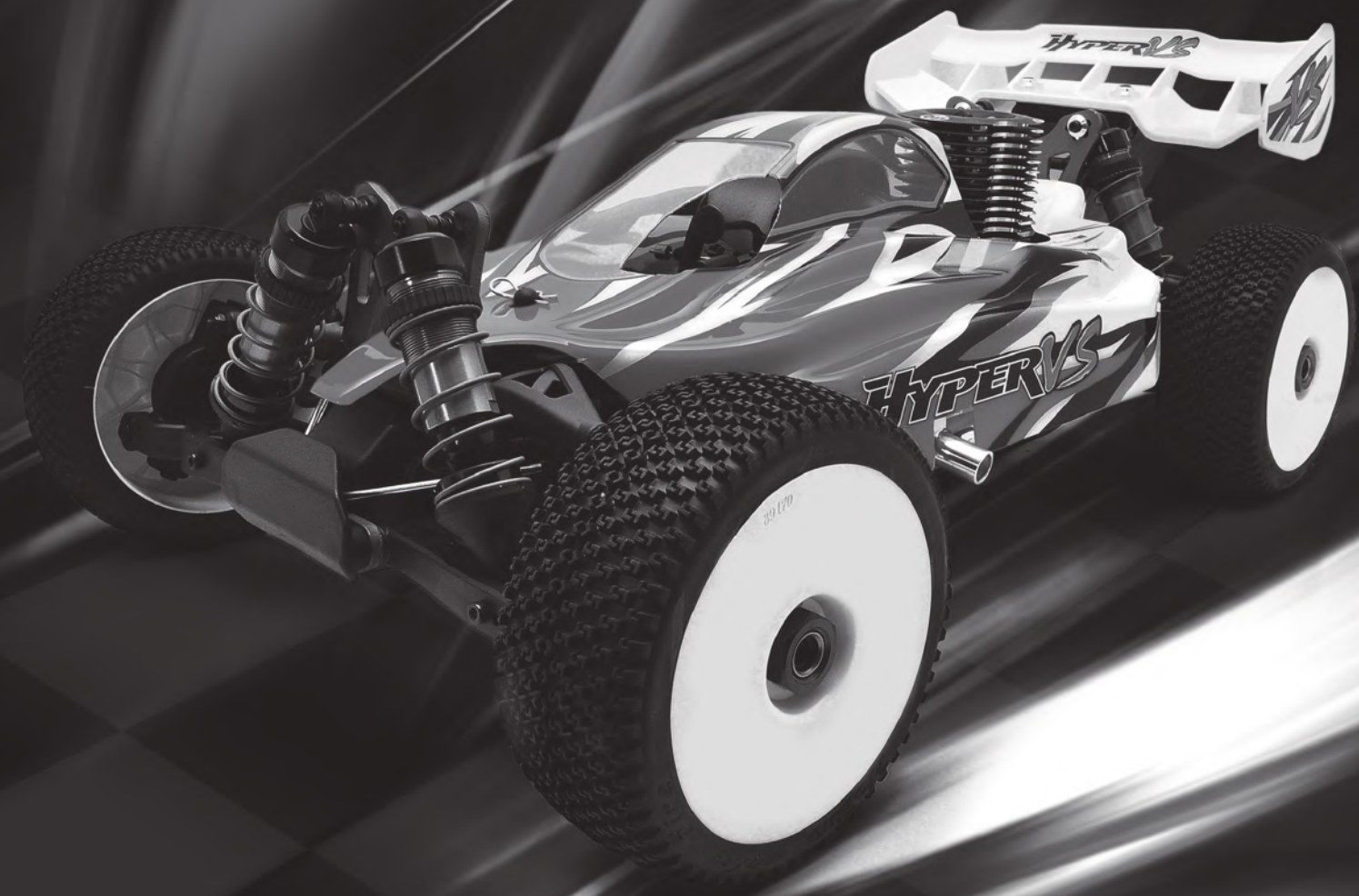


HYPERVS

HOBao

HOBao ENTERPRISING CO., LTD.
TEL:+886-2-2996-2229 FAX:+886-2-2996-8213
hobao@hobao.com.tw

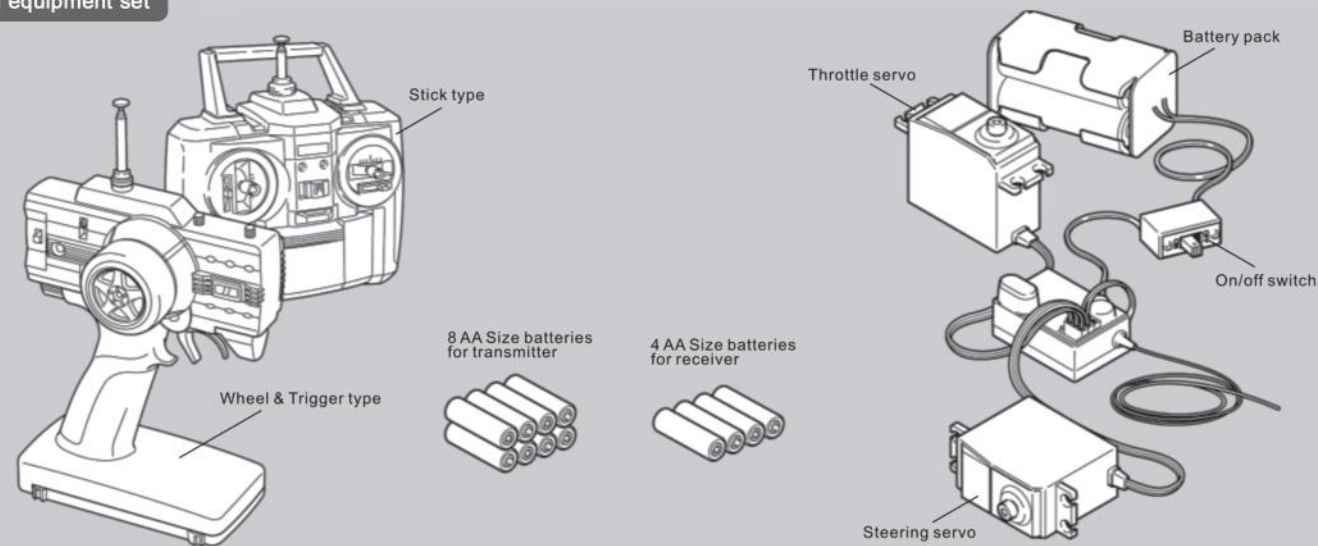
MADE IN TAIWAN



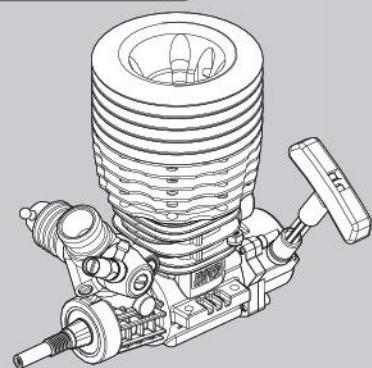
INSTRUCTION MANUAL

HYPERVS

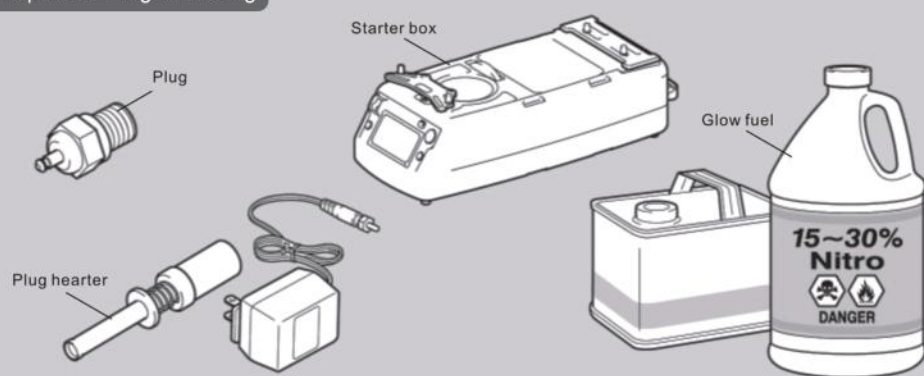
Radio control equipment set



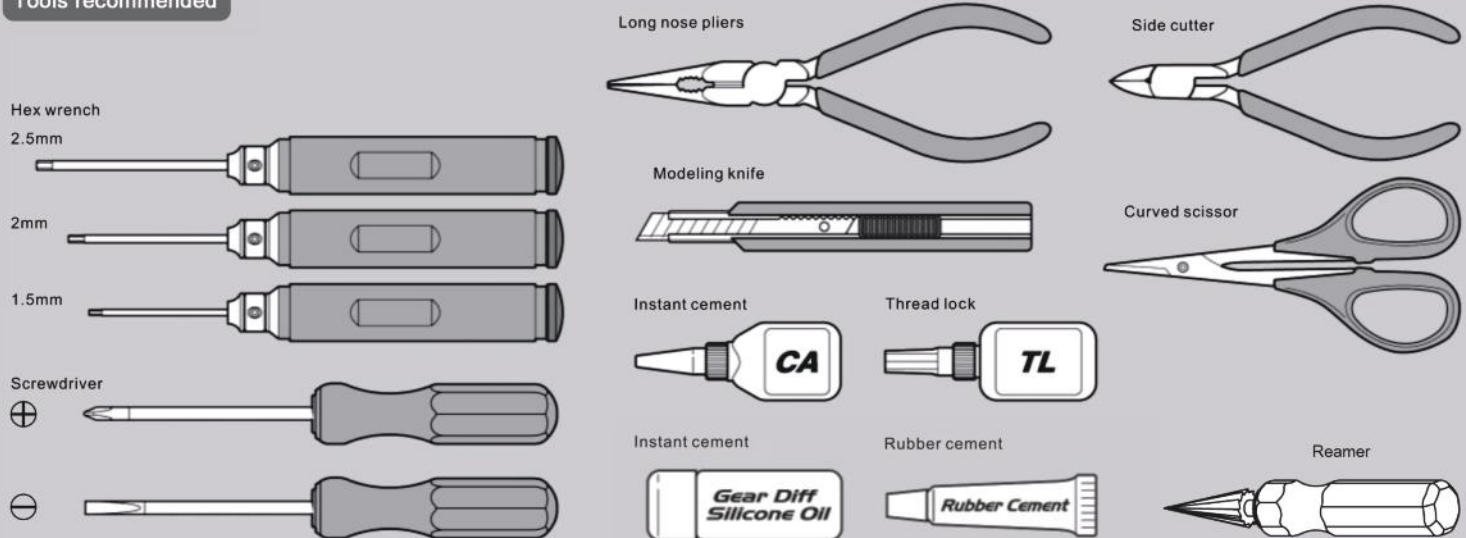
Hyper 30 Engine series



Required for engine starting



Tools recommended

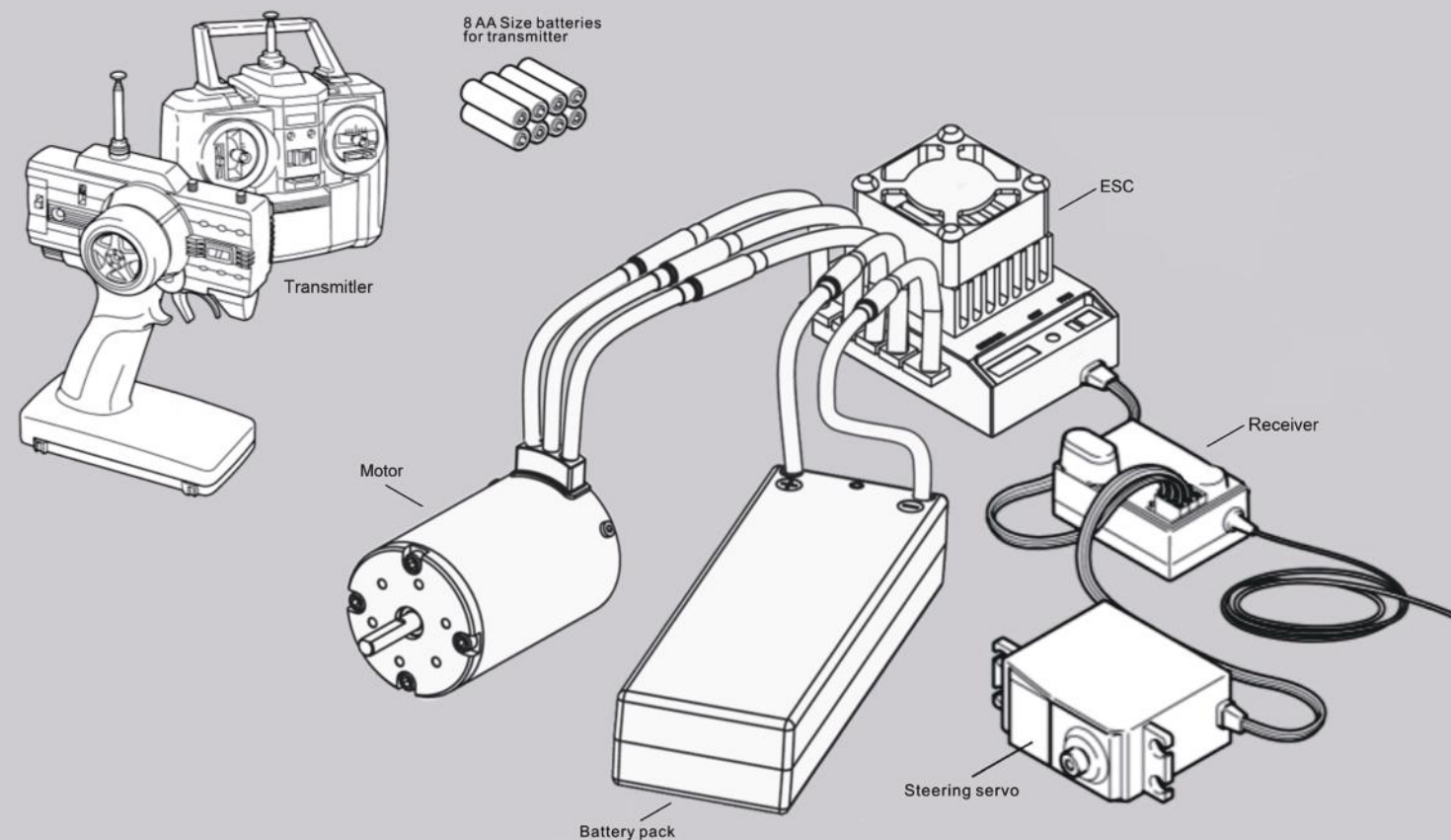


Included items

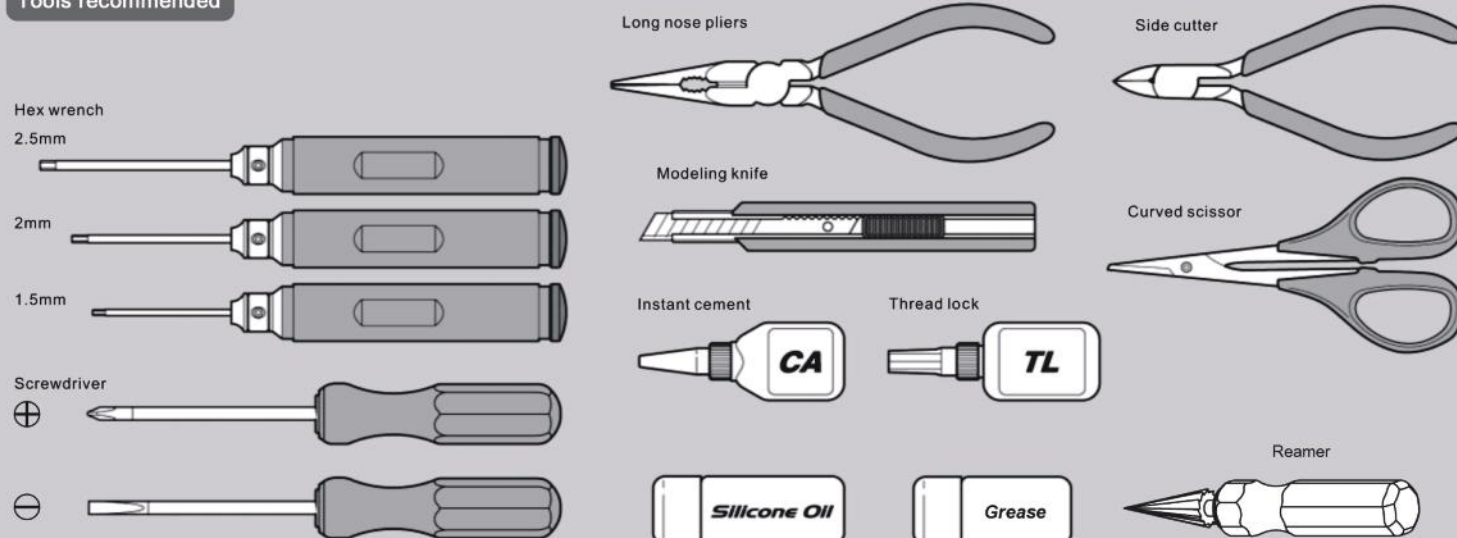


HYPERVS_e

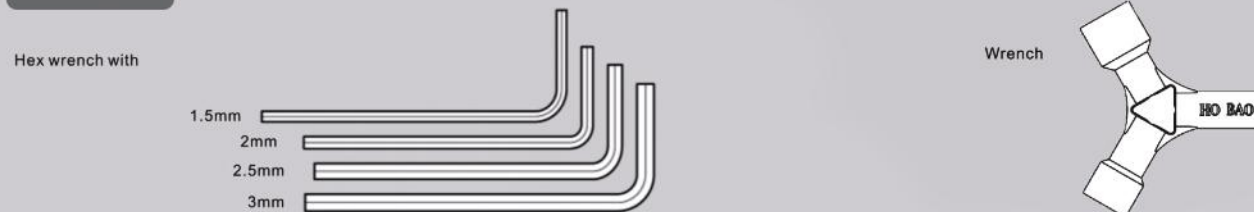
Radio control equipment set



Tools recommended



Included items



1



87002
4.1x8x0.1mm x8
Washer



87005-2
6.2x13.9x0.15mm x4
Washer



36101
5.8x1.9mm x4
O-ring



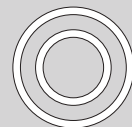
38404
4x4mm x2
Set Screw



31310
3x10mm x8
F/H Screw



36001
2.5x13.8mm x4
Shaft



84076
8x16x5mm x4
Ball Bearing

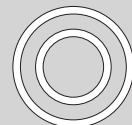
2



38504
5x4mm x2
Set Screw



33315
3x15mm x4
B/H Screw



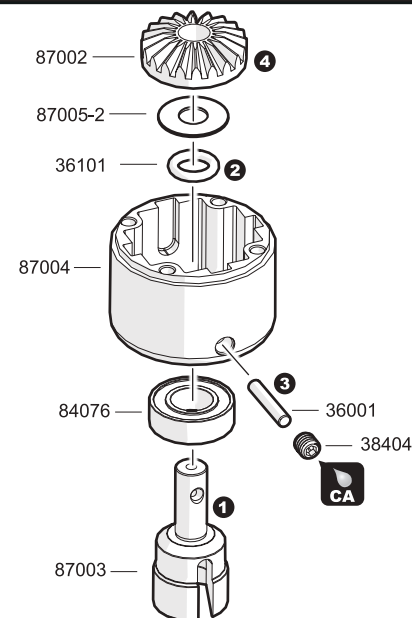
84076
8x16x5mm x4
Ball Bearing

Front / Rear Differential Assembly

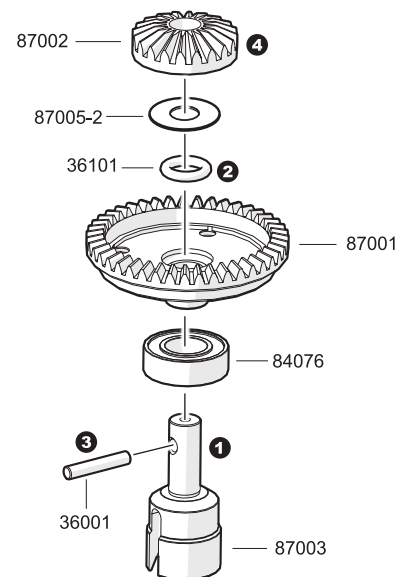
x2

GP & EP

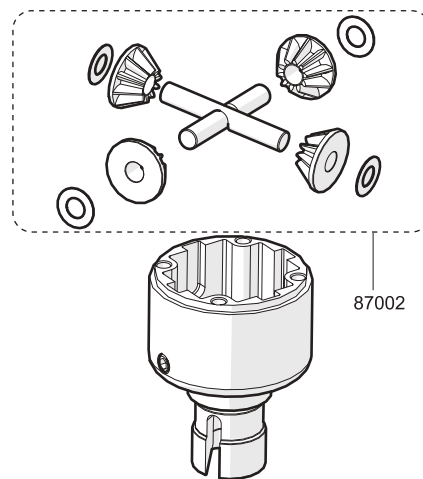
1



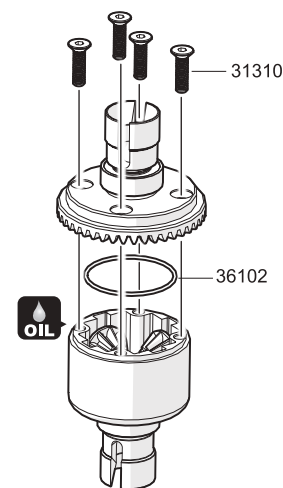
2



3



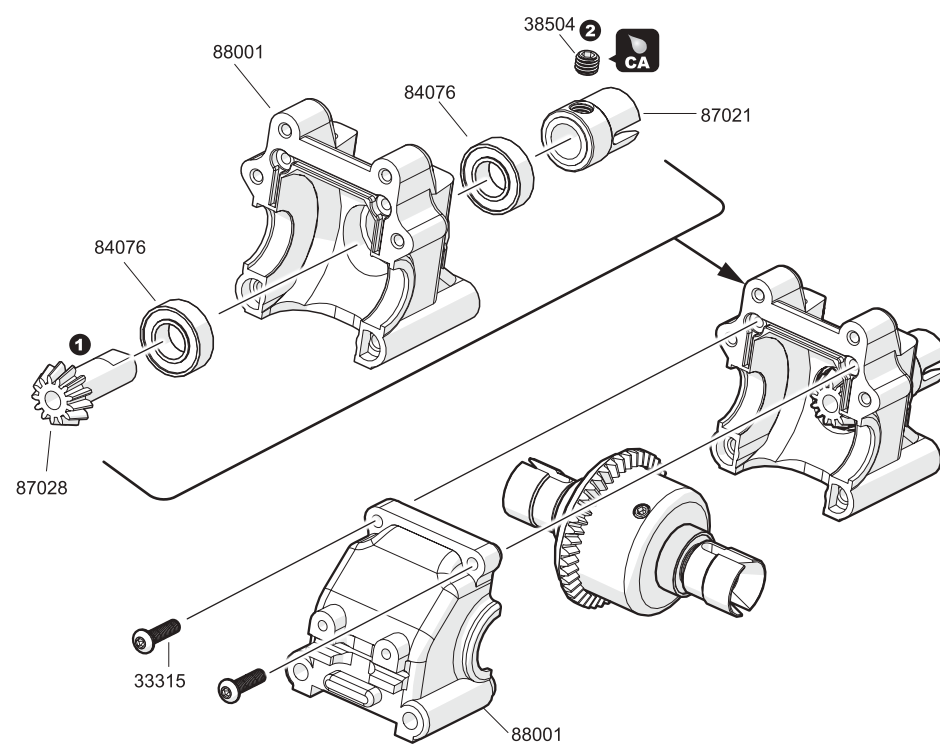
4



Front / Rear Gear Box Assembly

x2

GP & EP



3



38504
5x4mm x1
Set Screw



38308
3x8mm x2
Set Screw



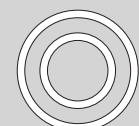
90038
4x21.5mm x2
Hinge Pin



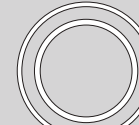
90035
2.5x11.8mm x2
Shaft



87027-1
2.5x16.8mm x2
Shaft

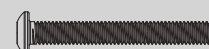


84076
8x16x5mm x1
Ball Bearing

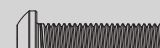


22115
12x18x4mm x1
Ball Bearing

4



33325
3x25mm x1
B/H Screw



35418
4x18mm x2
B/H Screw



39008
M3 Nut x2



38408
4x8mm x1
Set Screw

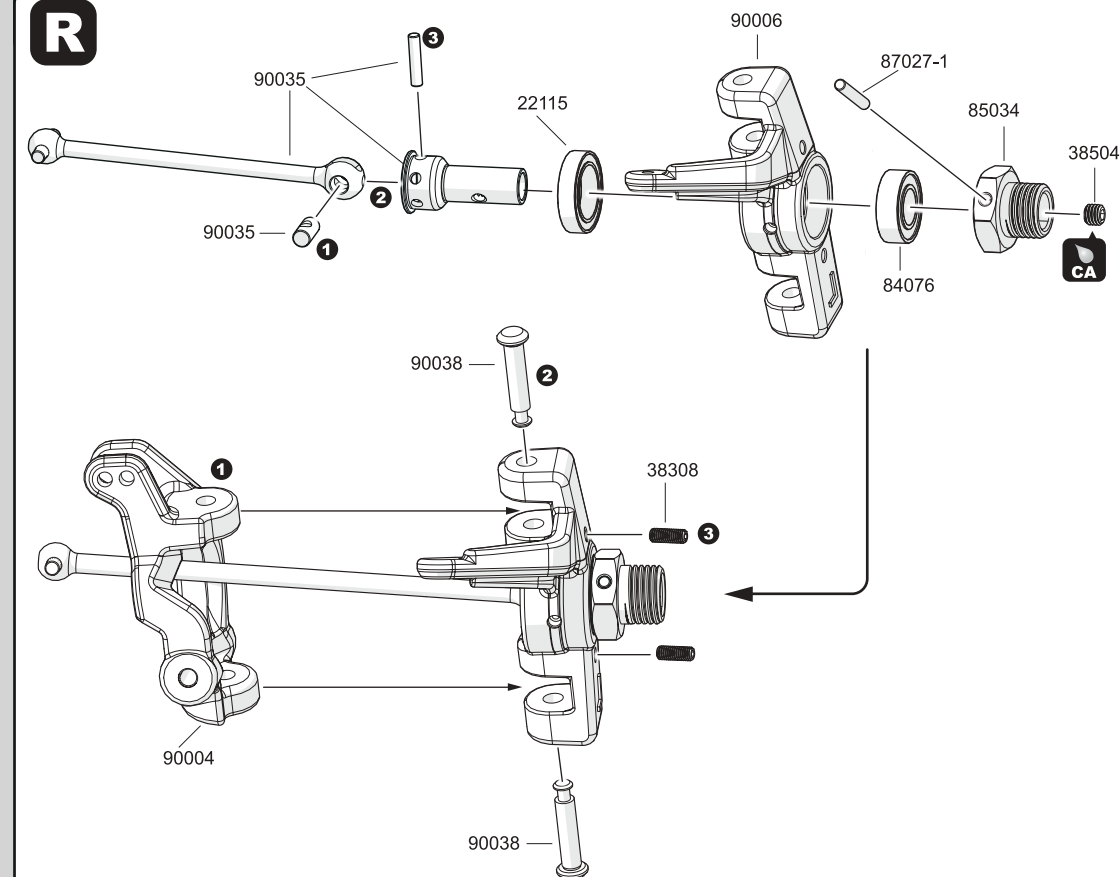


88031
7.8mm x1
Steel Ball

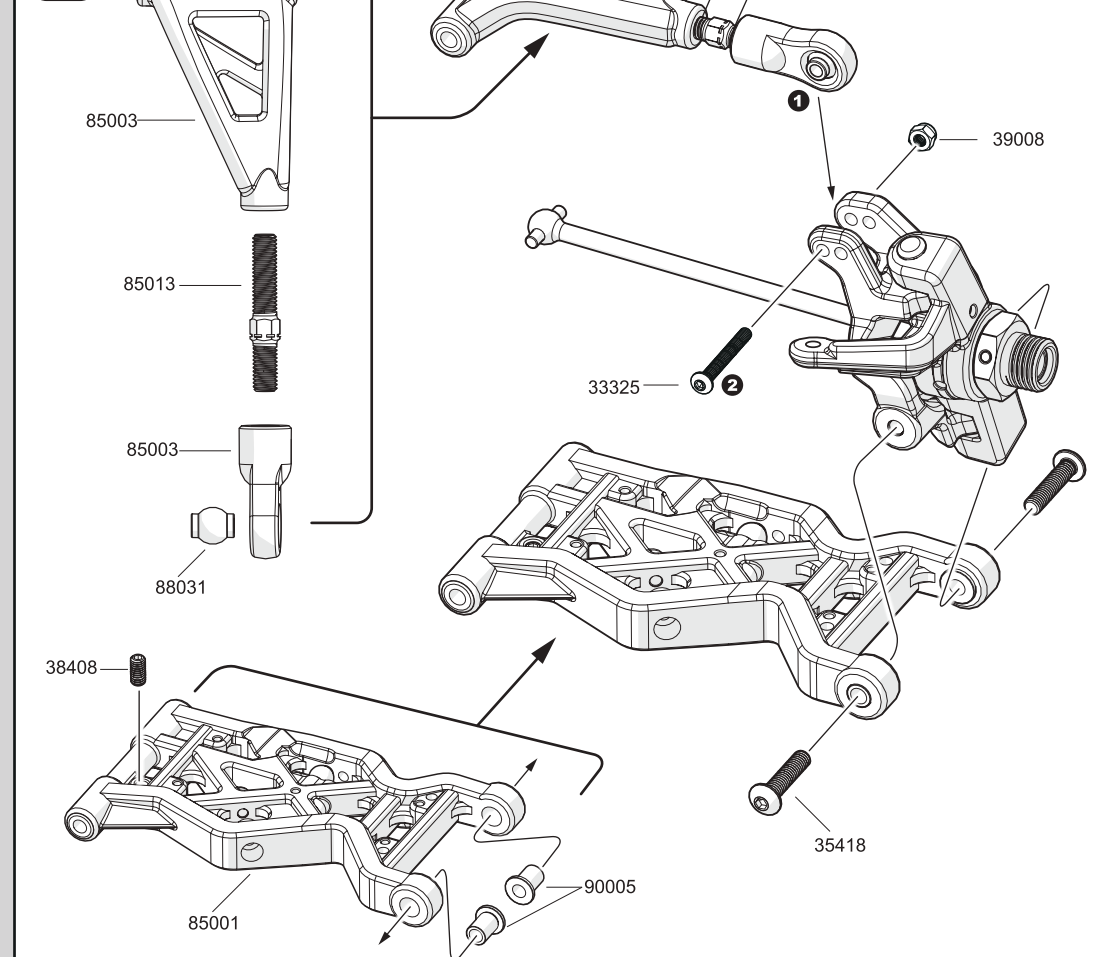
Front Steering Knuckle And CVA Shaft Assembly

GP & EP

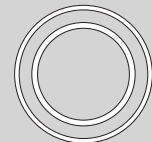
R



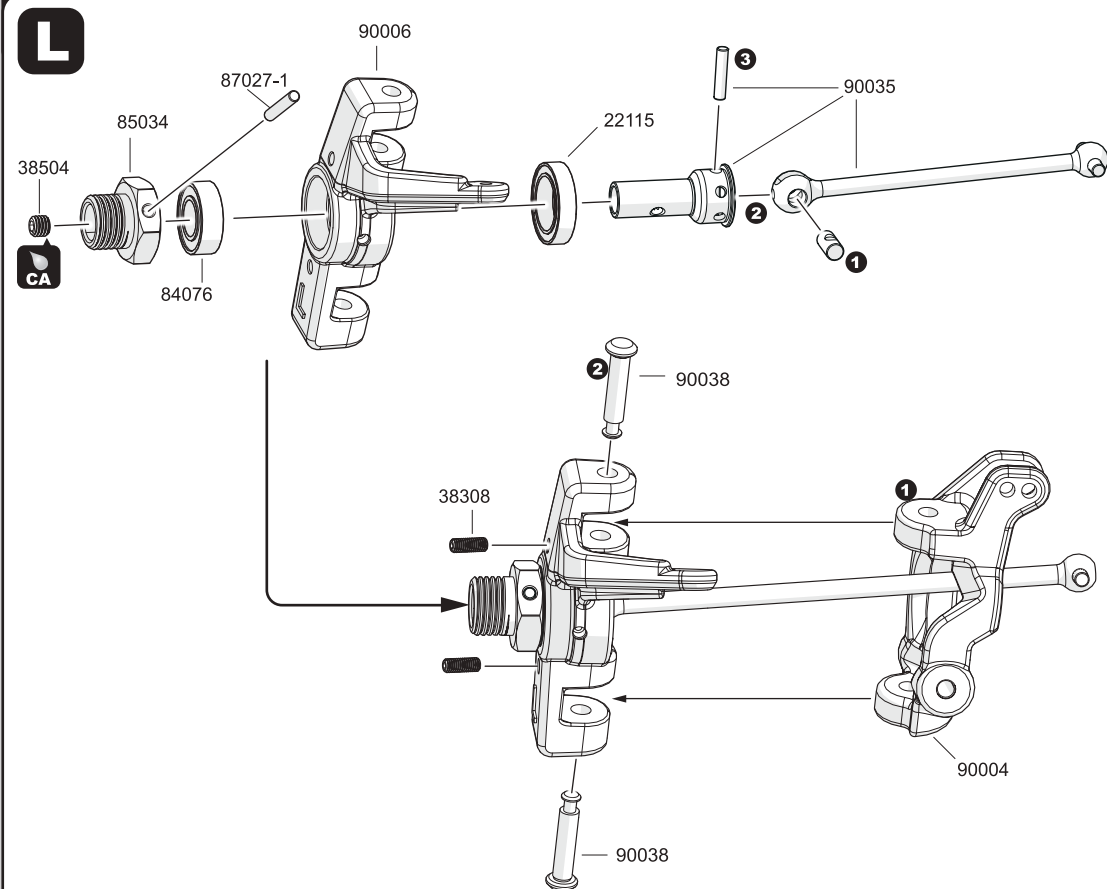
R



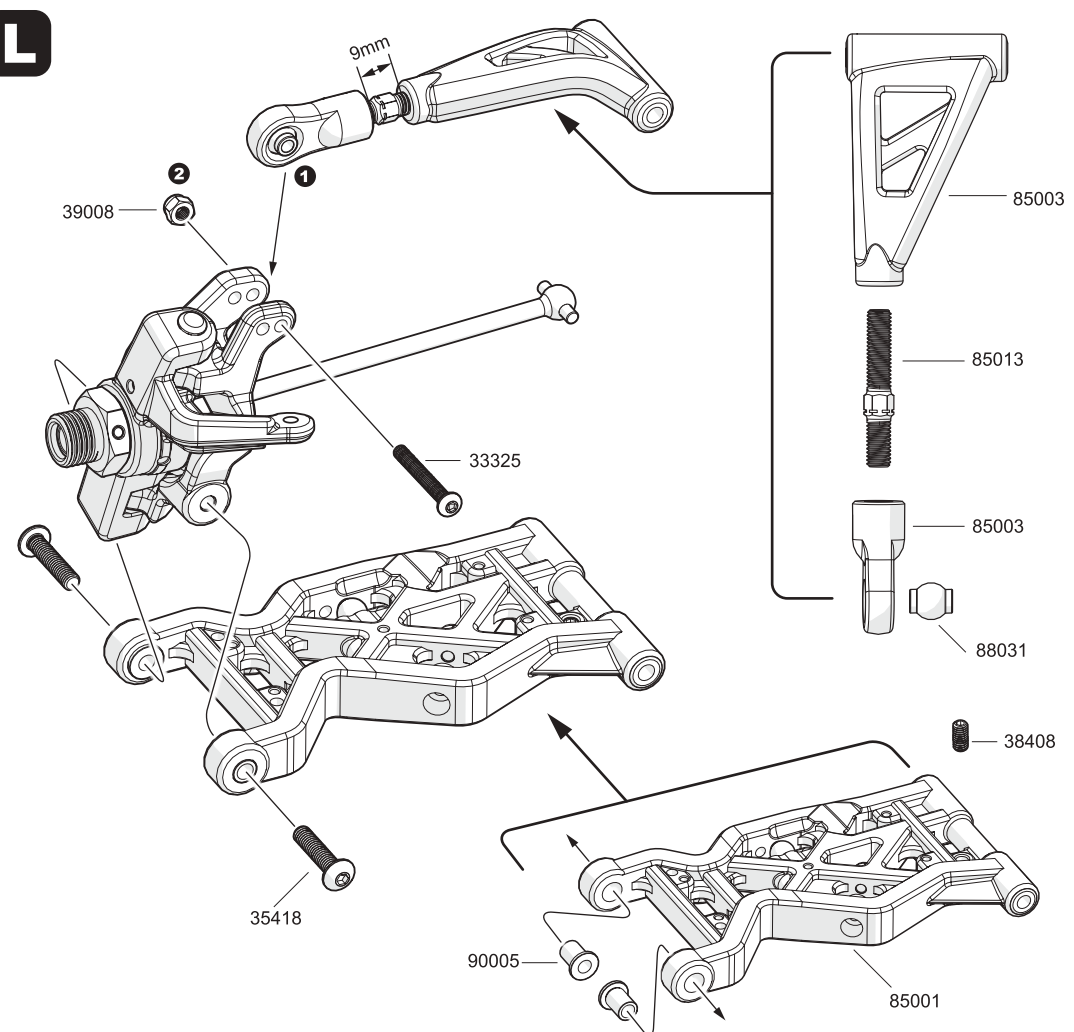
GP & EP



22115
12x18x4mm x1
Ball Bearing

**GP & EP**

88031
7.8mm x1
Steel Ball

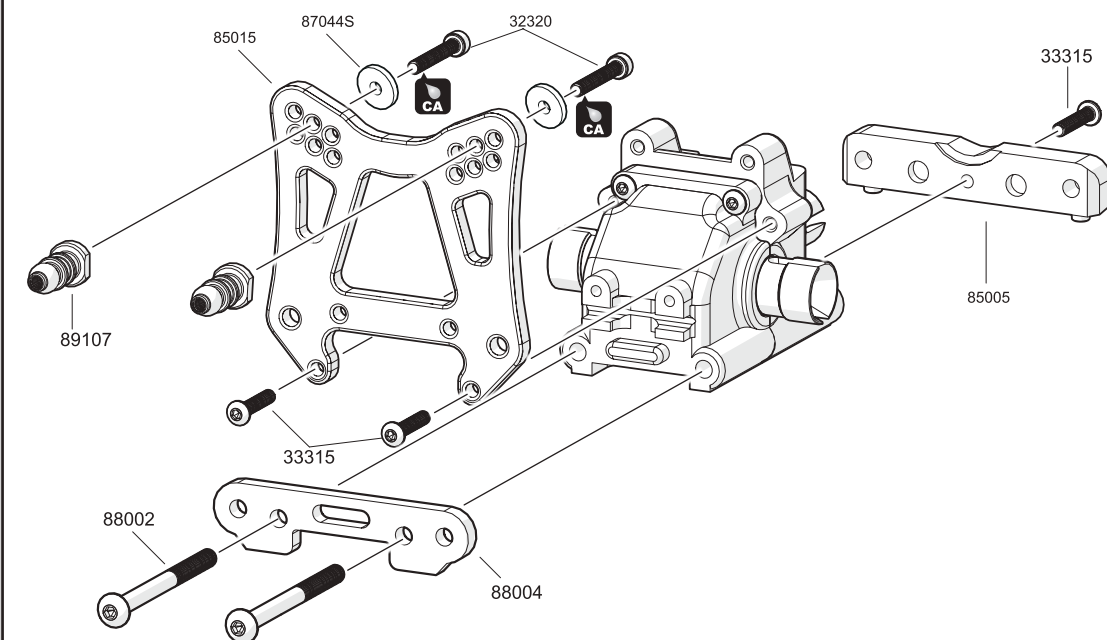


A diagram of a vertical rod. The top part is a smooth cylinder with a hemispherical cap. The bottom part of the rod is threaded, indicated by diagonal hatching.

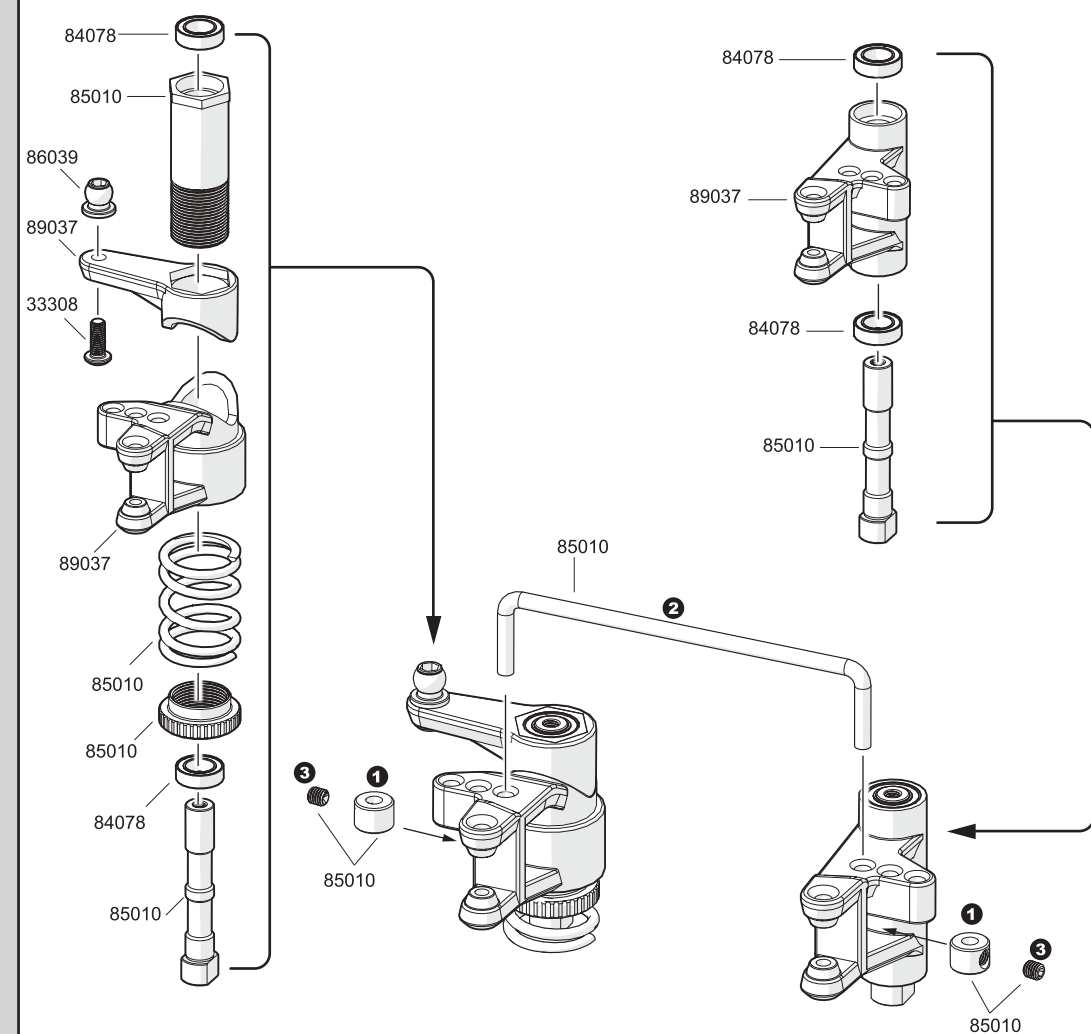
88002
4x47mm x2
B/H Screw



38303
3x3mm x2
Set Screw

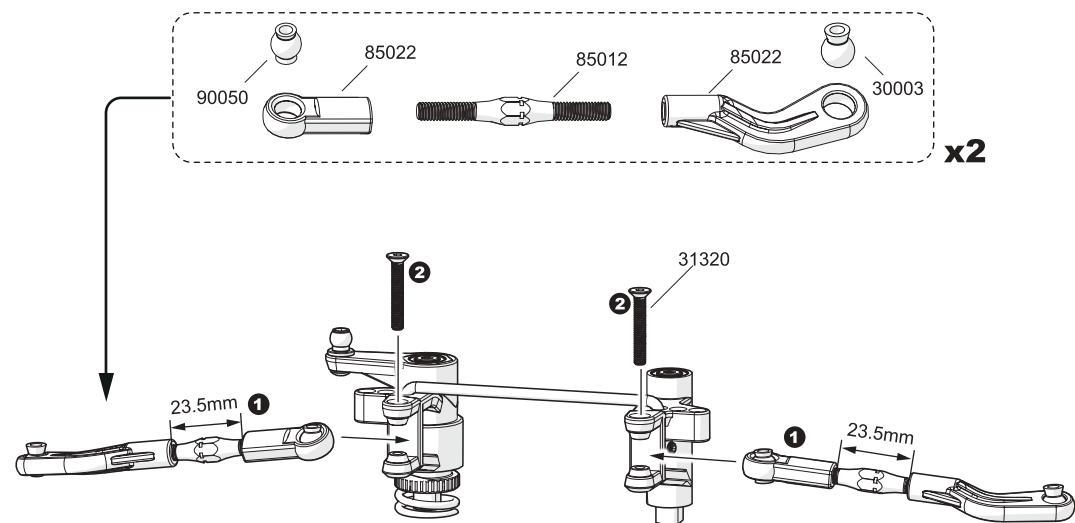
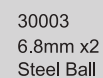
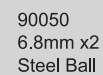


GP & EP

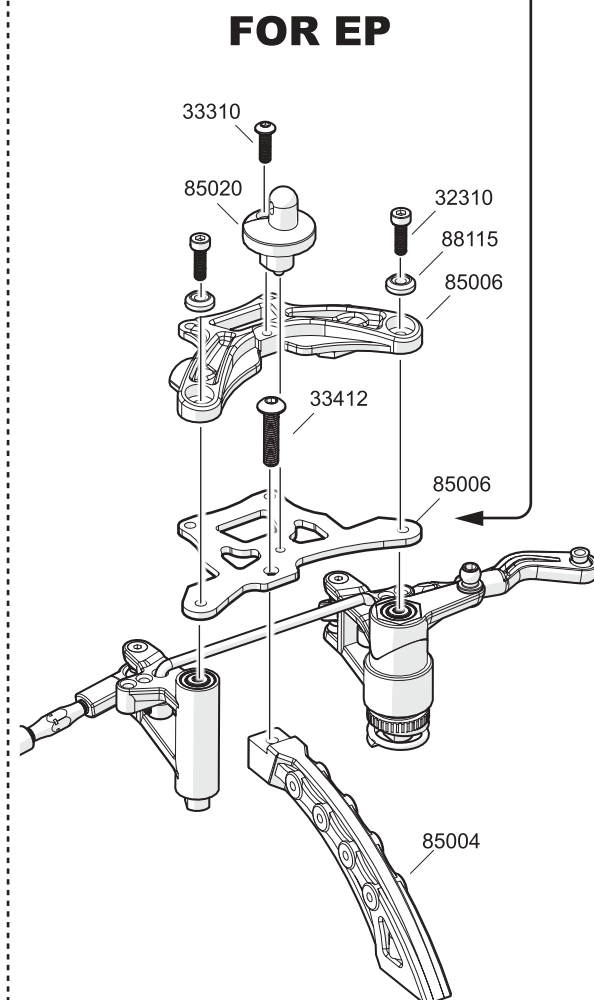
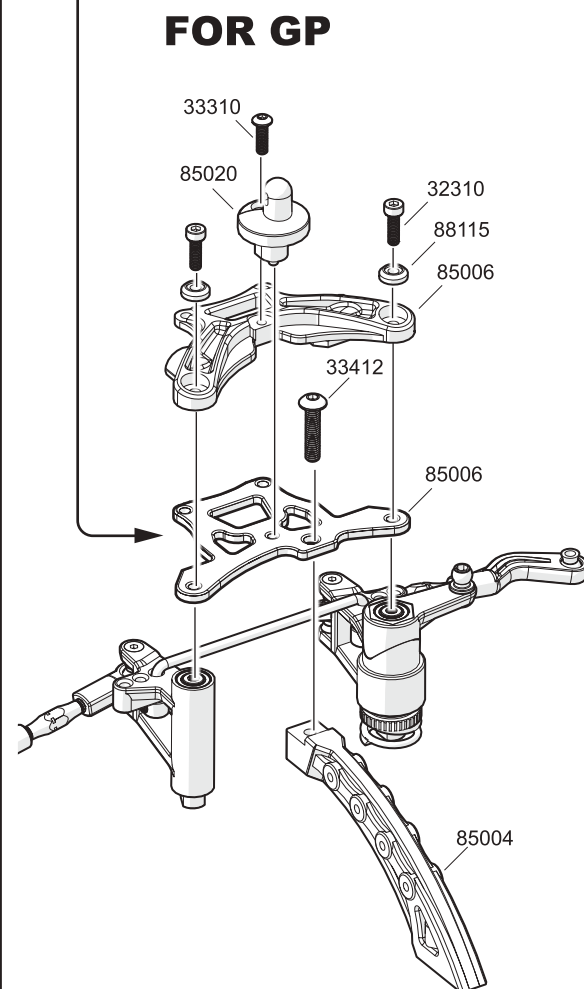
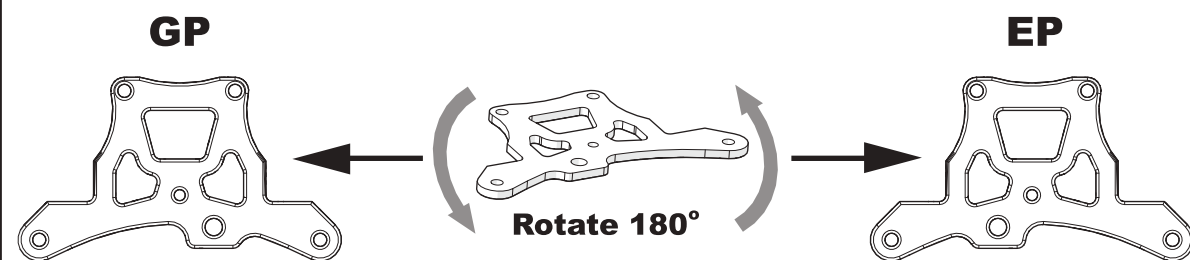


04

GP & EP

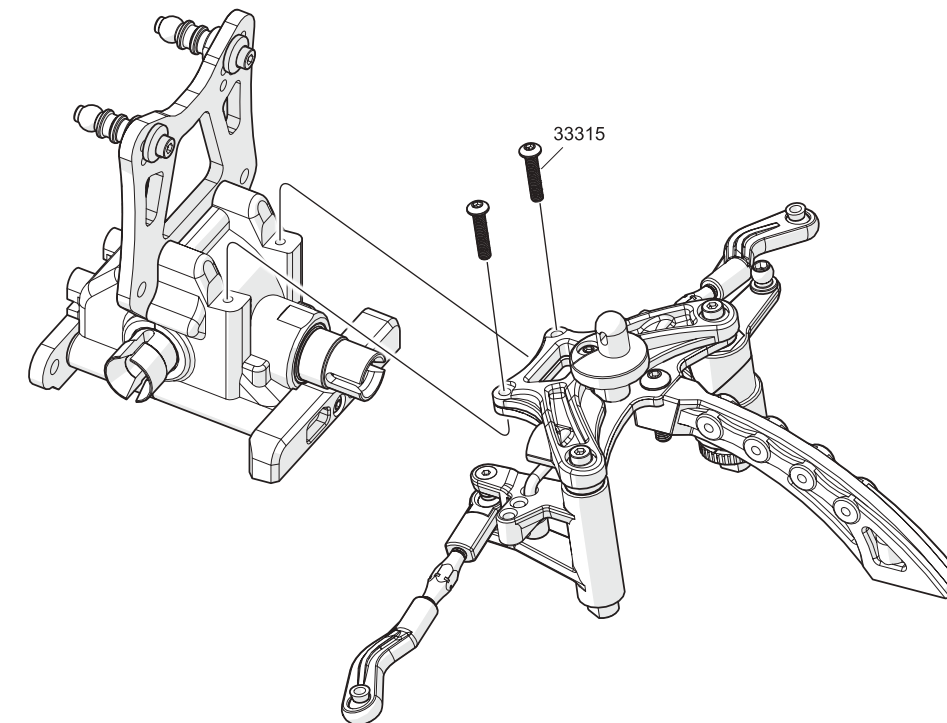
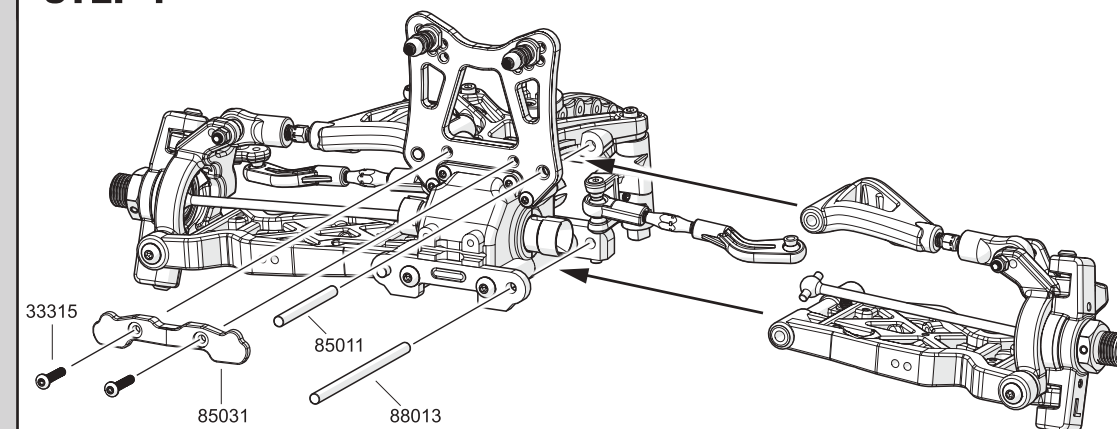


GP & EP

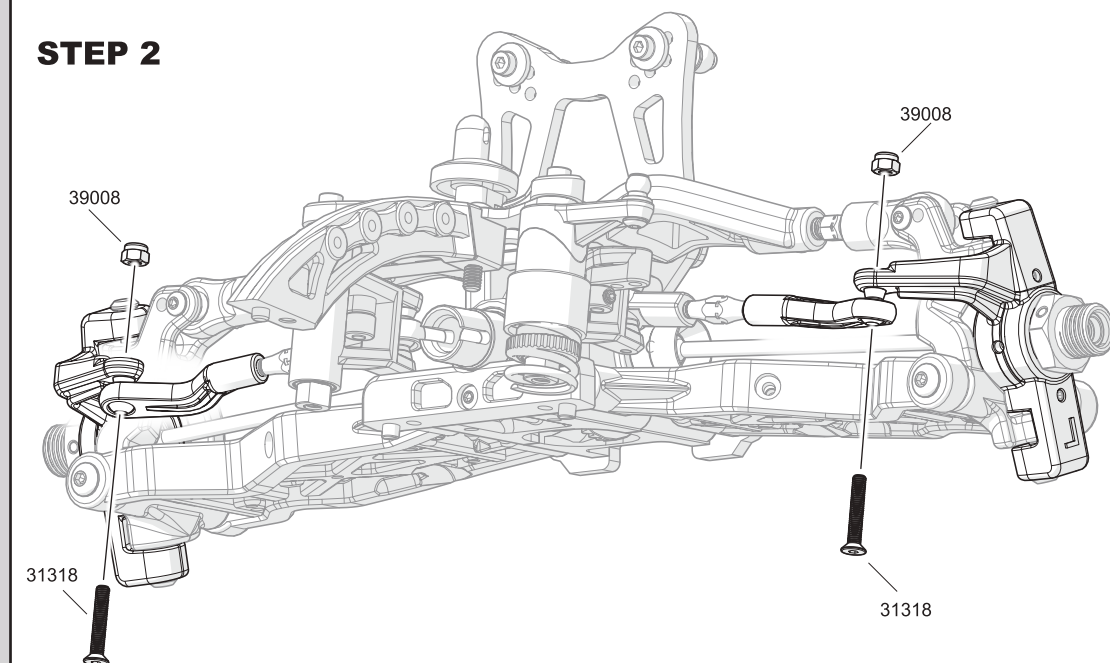
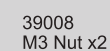


05

GP & EP

**GP & EP**

STEP 2








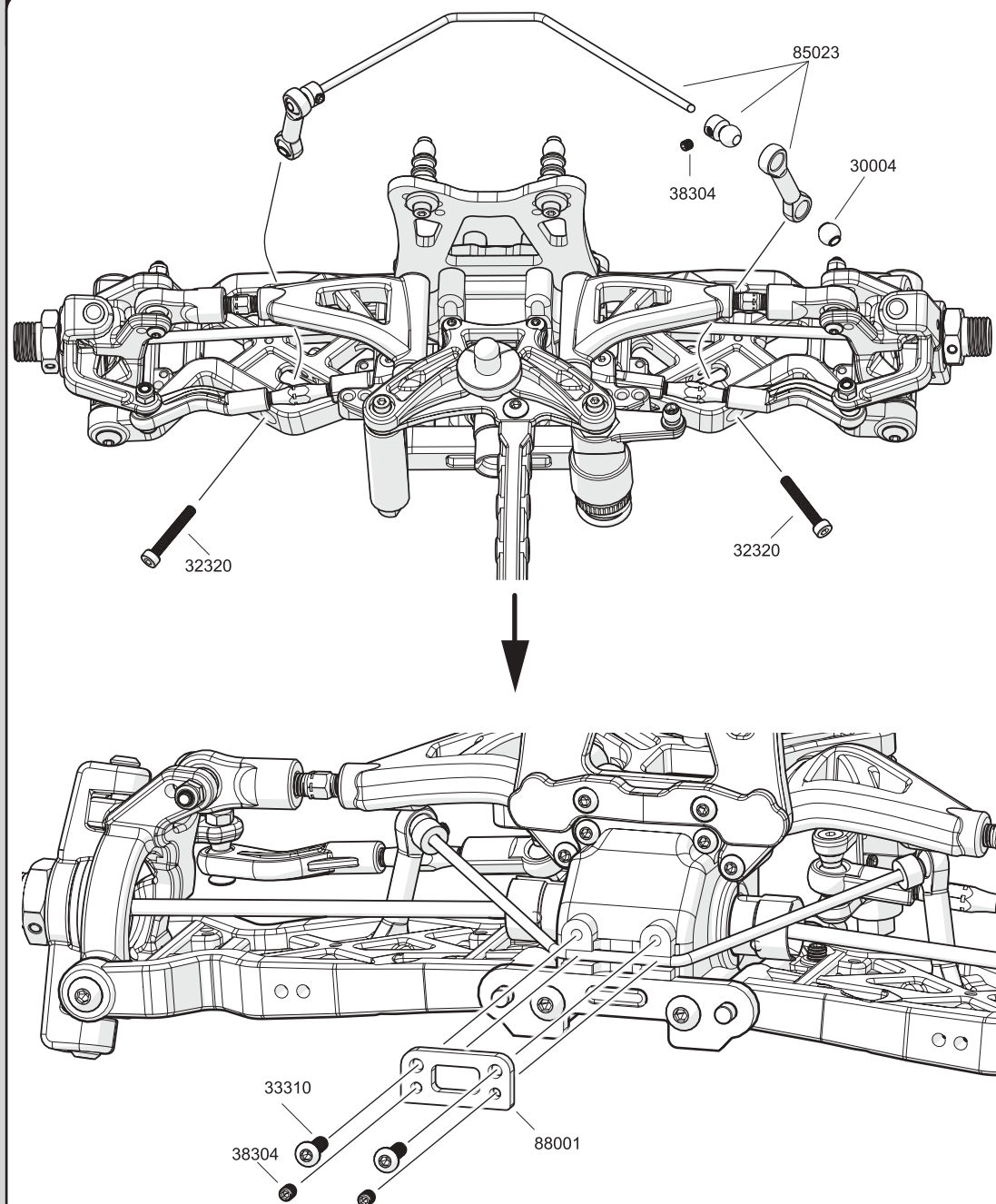
06

14

Front Sway Bar Assembly

GP & EP

-  85023
3x3mm x2
Set Screw
-  38304
3x4mm x2
Set Screw
-  33310
3x10mm x2
B/H Screw
-  32320
3x20mm x2
Cap Screw
-  30004
6.8mm
Steel Ball

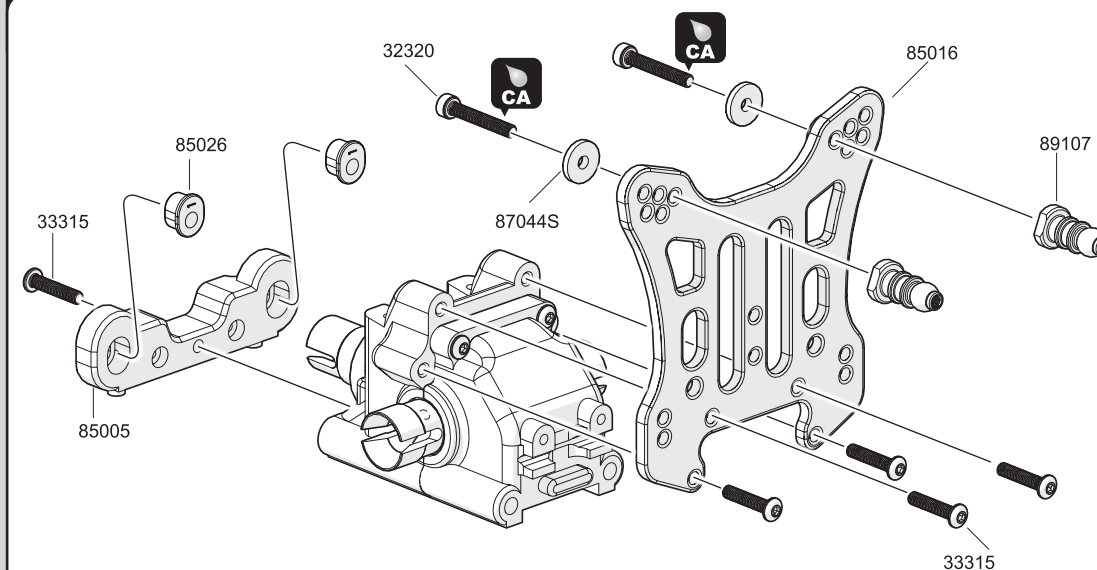


15

Rear Shock Tower & Lower Arm Holder Assembly

GP & EP







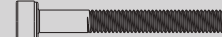

-  87044S
Alum Collar x2
-  32320
3x20mm x2
Cap Screw
-  33315
3x15mm x5
B/H Screw

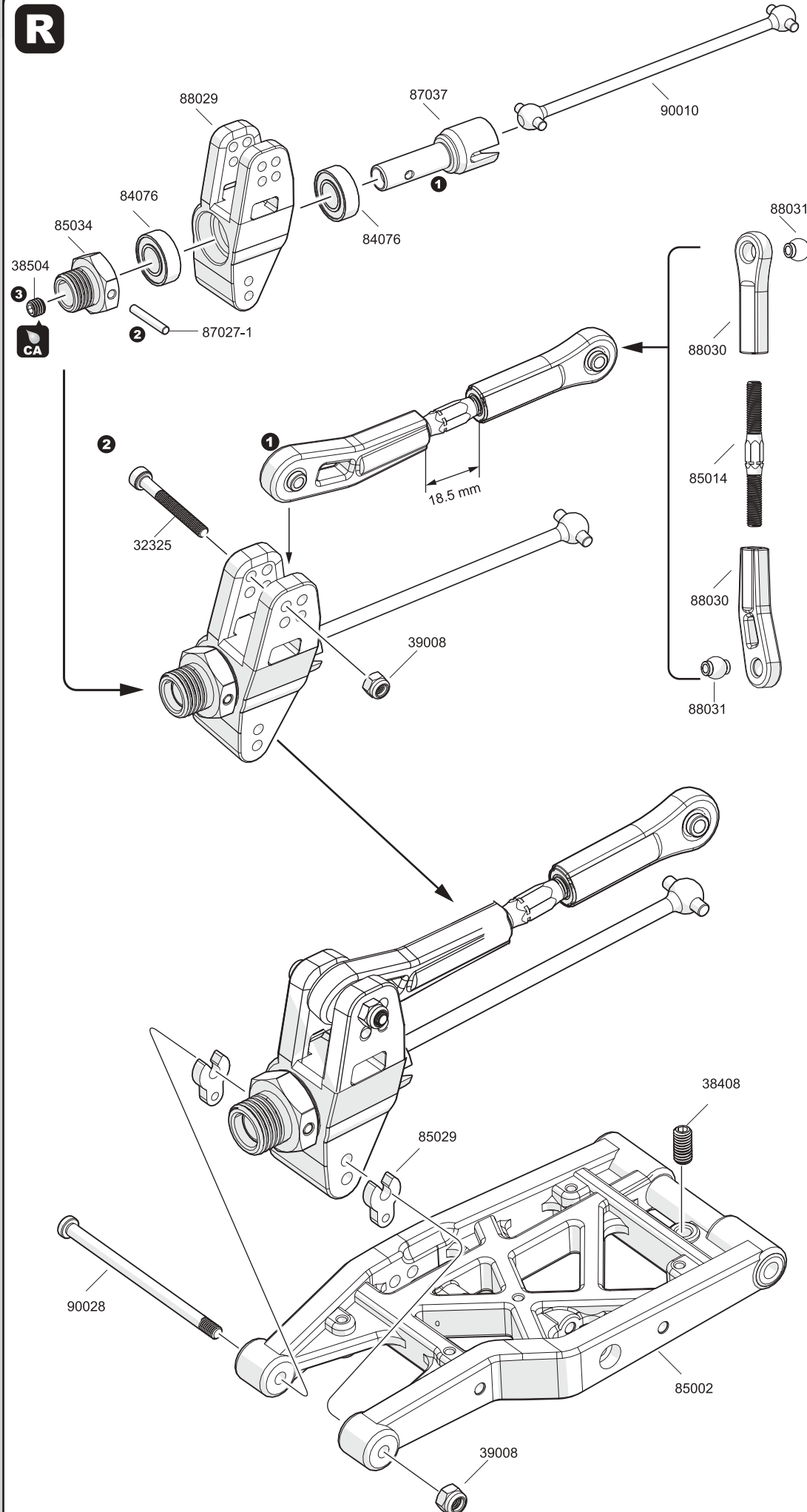


16

Rear Suspension Arm / Axle Assembly 1

GP & EP

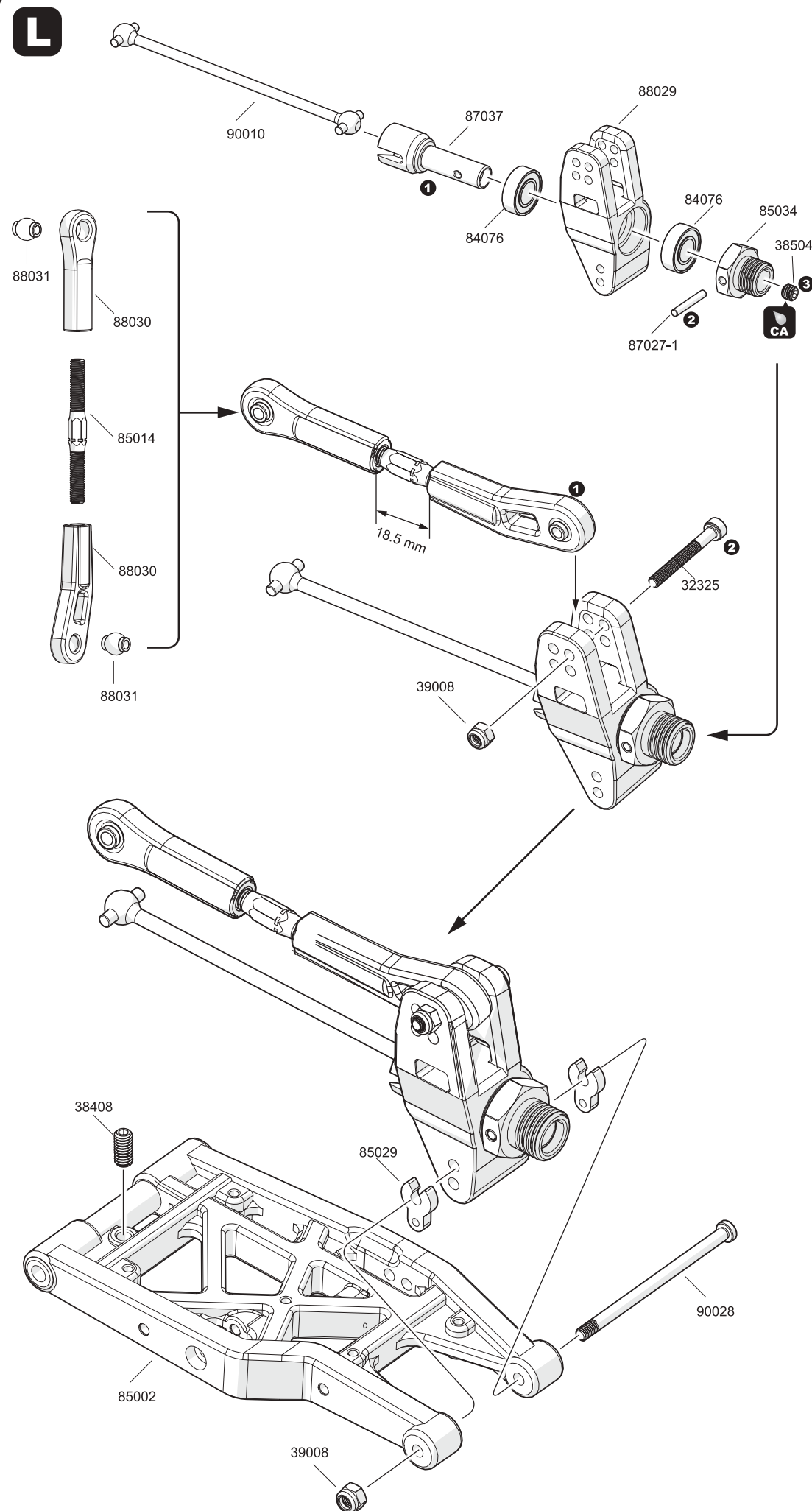
-  38504
5x4mm x1
Set Screw
-  38408
4x8mm x1
Set Screw
-  39008
M3 Nut x2
-  88031
7.8mm x1
Ball Long
-  84076
8x16x5mm x2
Ball Bearing
-  87027-1
2.5x16.8mm x1
Shaft
-  32325
3x25mm x1
Cap Screw
-  90028
3x50mm x1
Cap Screw



17

Rear Suspension Arm / Axle Assembly 2

GP & EP



18

Rear Lower Arm Holder Assembly

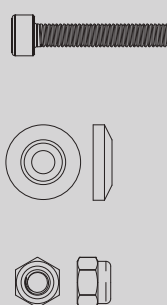
GP & EP



19

Rear Suspension Arm Assembly

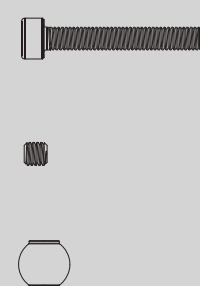
GP & EP



20

Rear Sway Bar Assembly

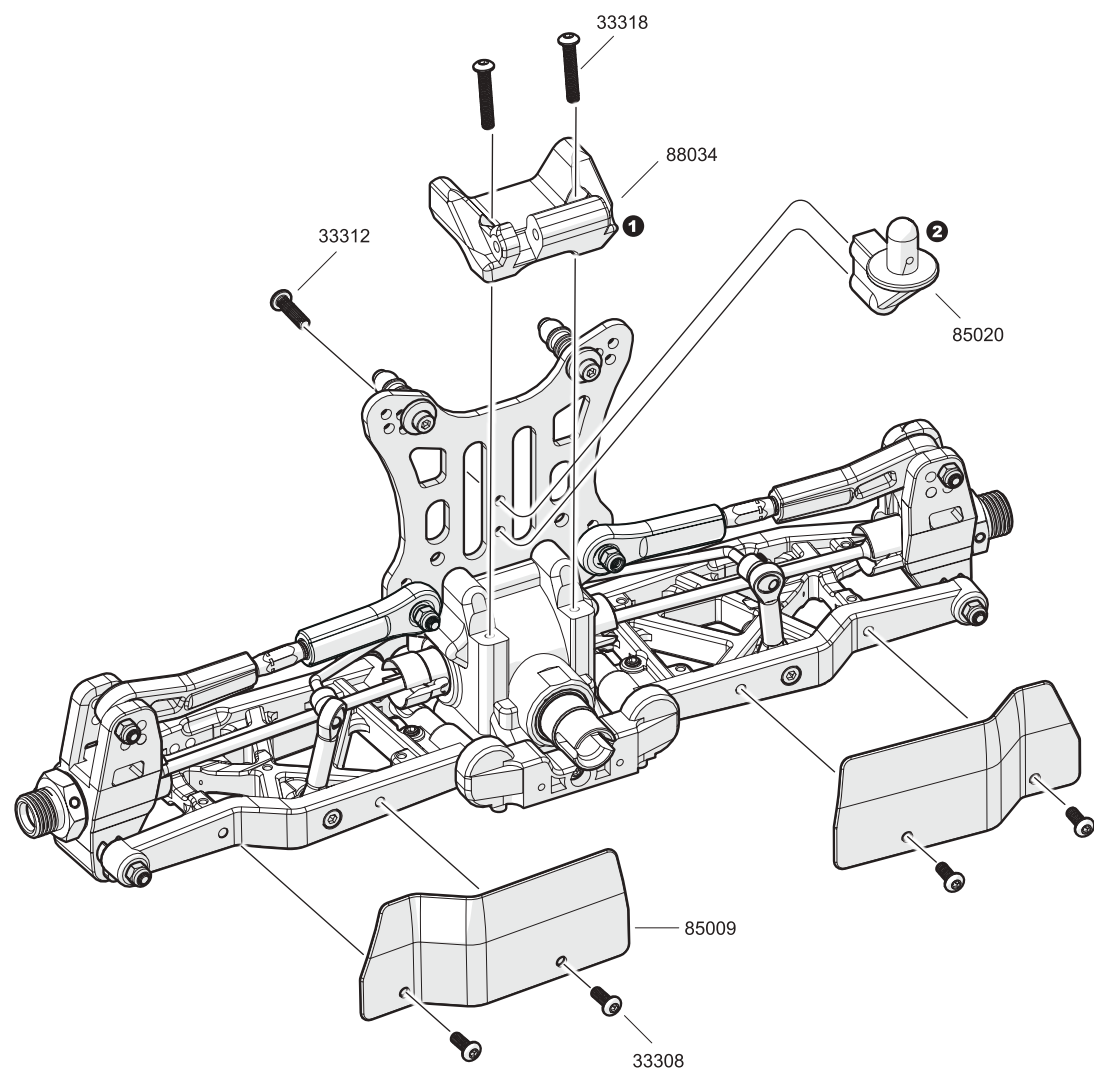
GP & EP



21

Rear Body Post And Mud Guard Assembly

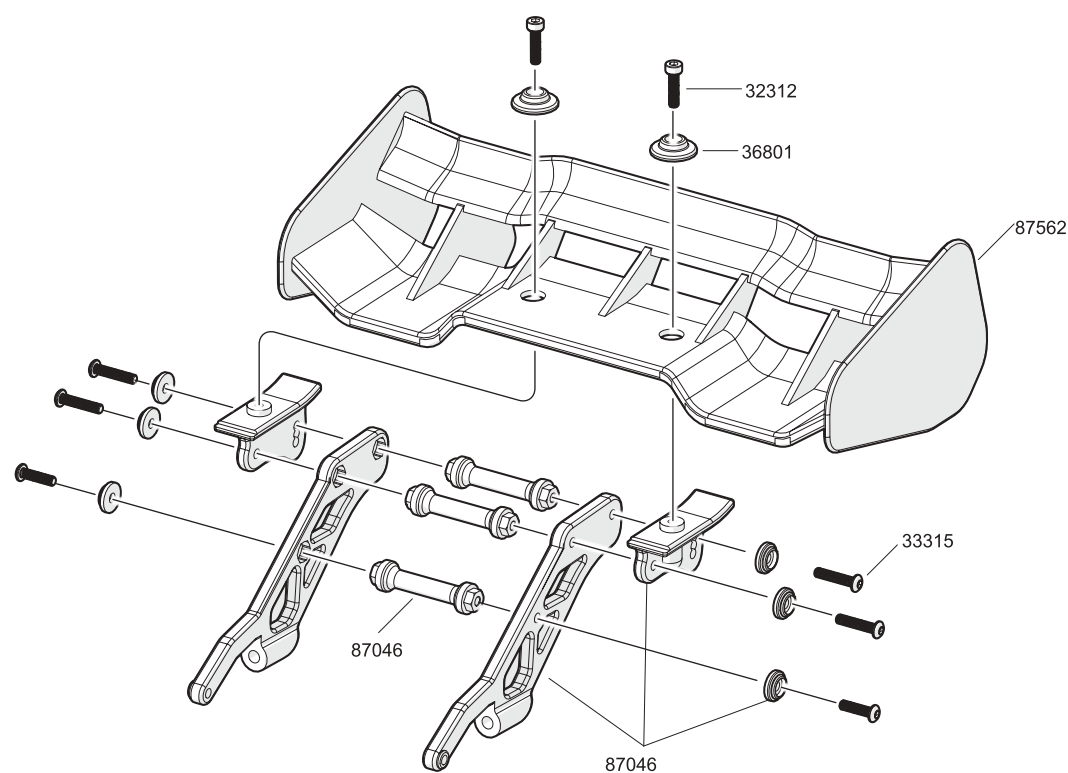
GP & EP



23

Wing Assembly

GP & EP



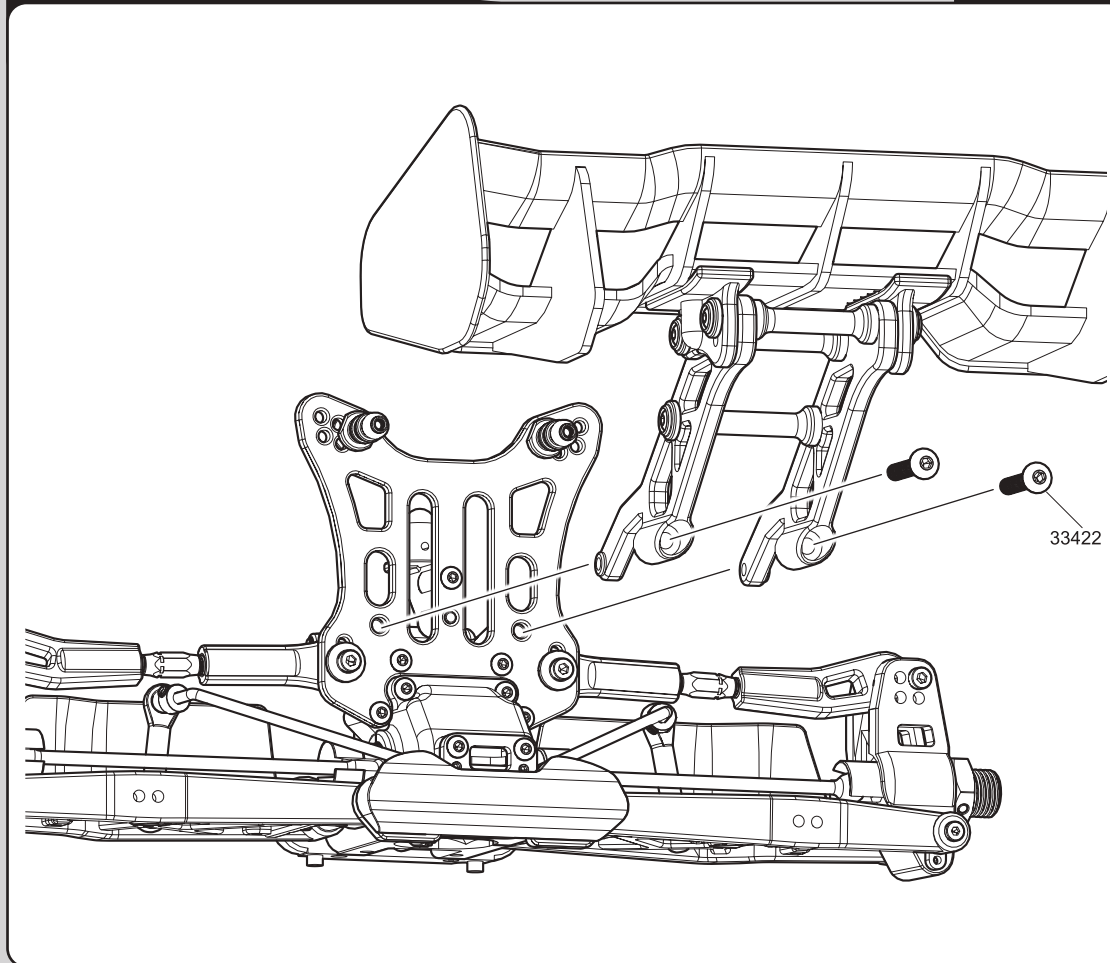
24

Wing Mount Assembly

GP & EP



33422
4x22mm x2
B/H Screw



25



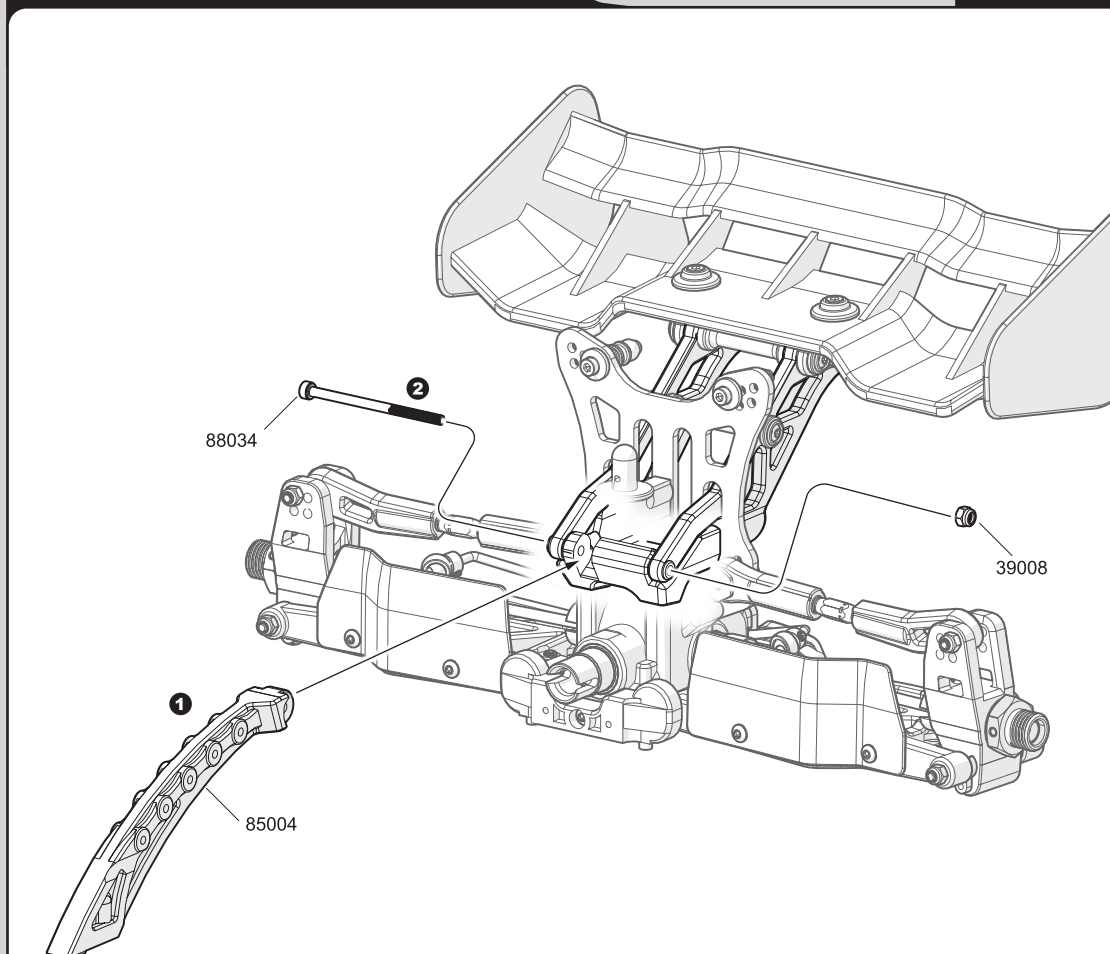
39008
M3 Nut x1

88034
3x50x20 x1
Cap Screw



Rear Chassis Brace Assembly

GP & EP



26



87002
4.1x8x0.1mm x4
Washer



87005-1
6.1x13.9x0.3mm x2
Washer



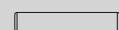
36101
5.8x1.9mm x2
O-ring



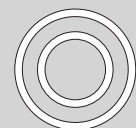
38404
4x4mm x1
Set Screw



33312
3x12mm x4
B/H Screw



36001
2.5x13.8mm x2
Shaft

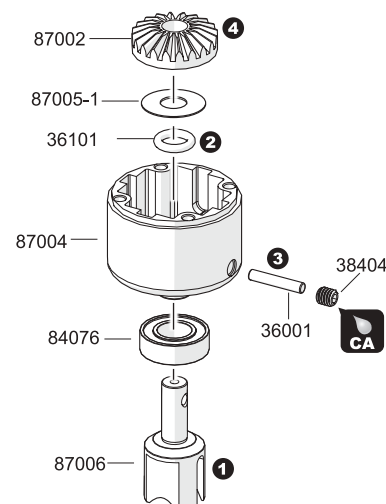


84076
8x16x5mm x2
Ball Bearing

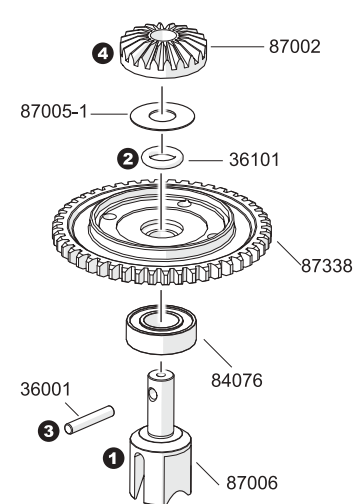
Center Differential Assembly

GP & EP

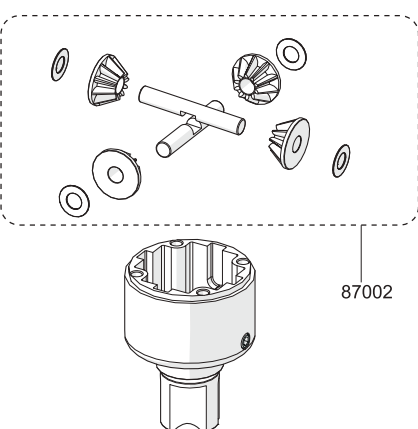
1



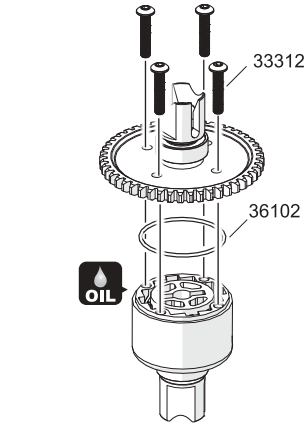
2



3



4



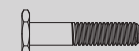
27



38303
3x3mm x2
Set Screw



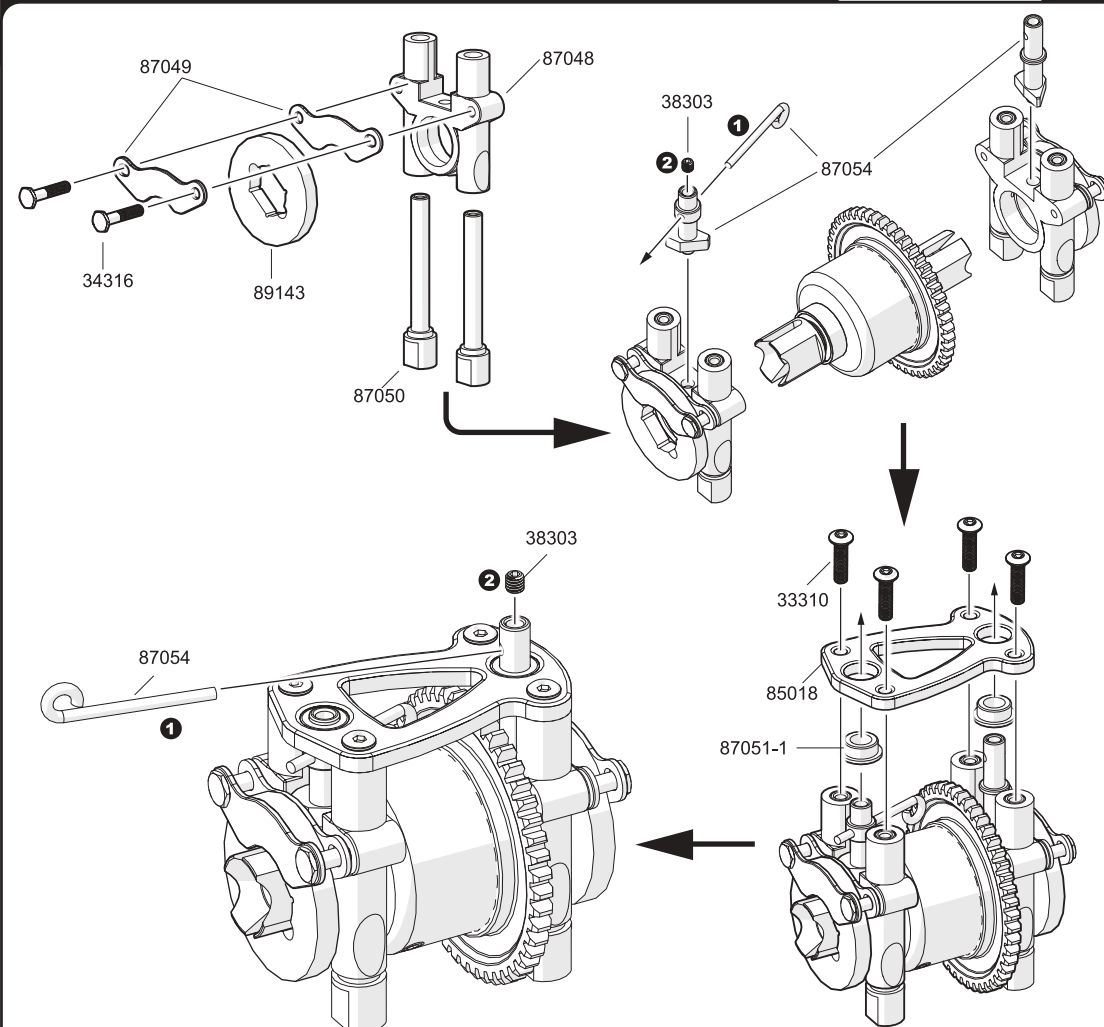
33310
3x10mm x4
B/H Screw



34316
3x14.5mm x4
Brake Screw

Center Differential / Brake Mount Assembly

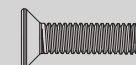
GP



28



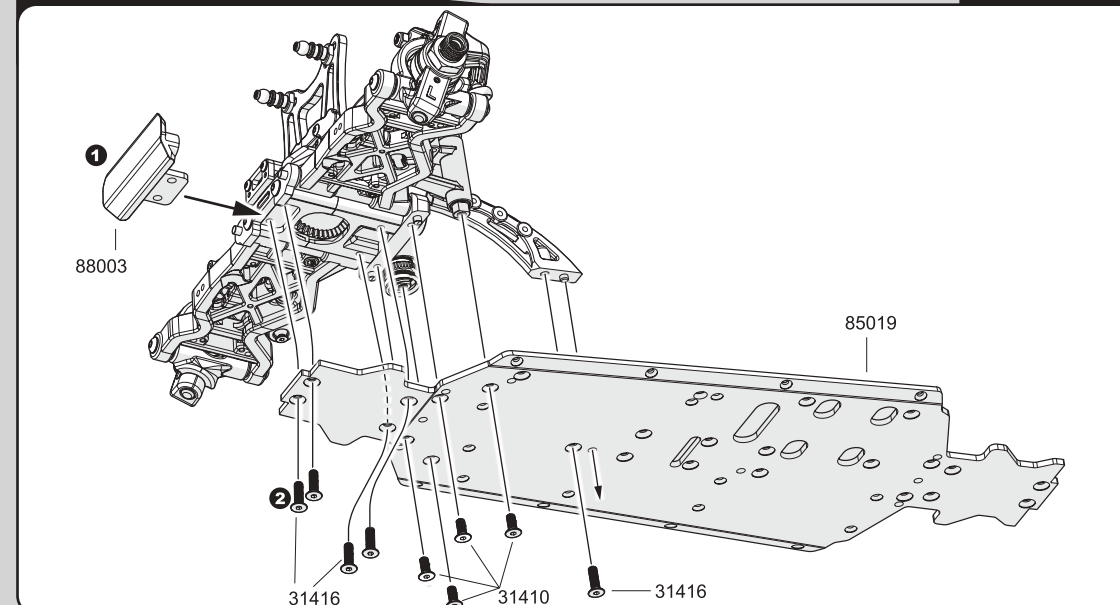
31410
4x10mm x4
F/H Screw



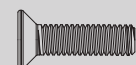
31416
4x16mm x5
F/H Screw

Front Clip Assembly

GP & EP



29



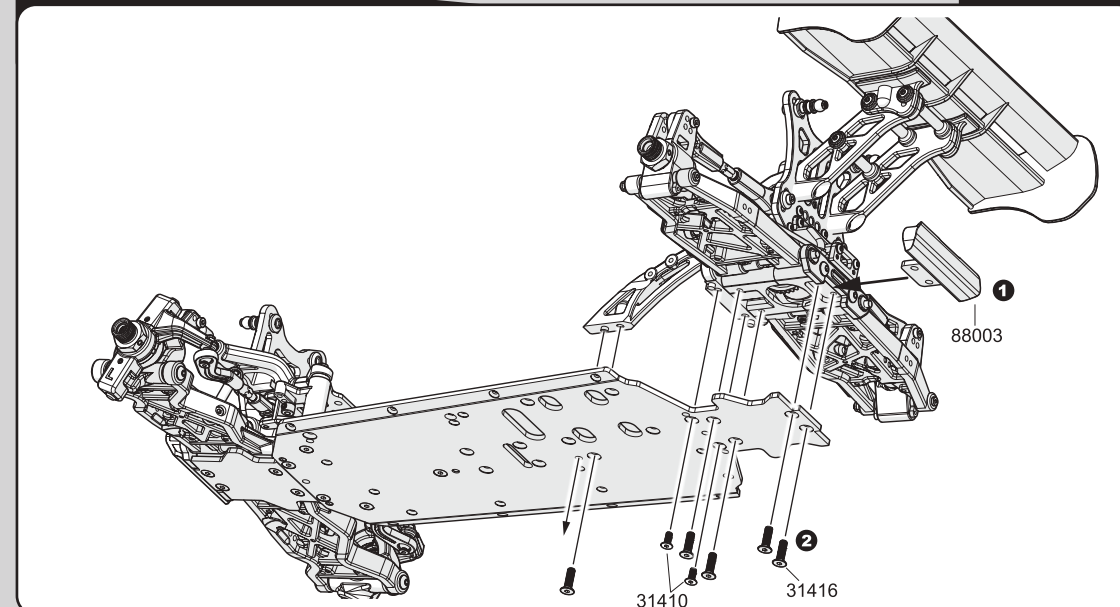
31416
4x16mm x5
F/H Screw



31410
4x10mm x2
F/H Screw

Rear Clip Assembly

GP & EP



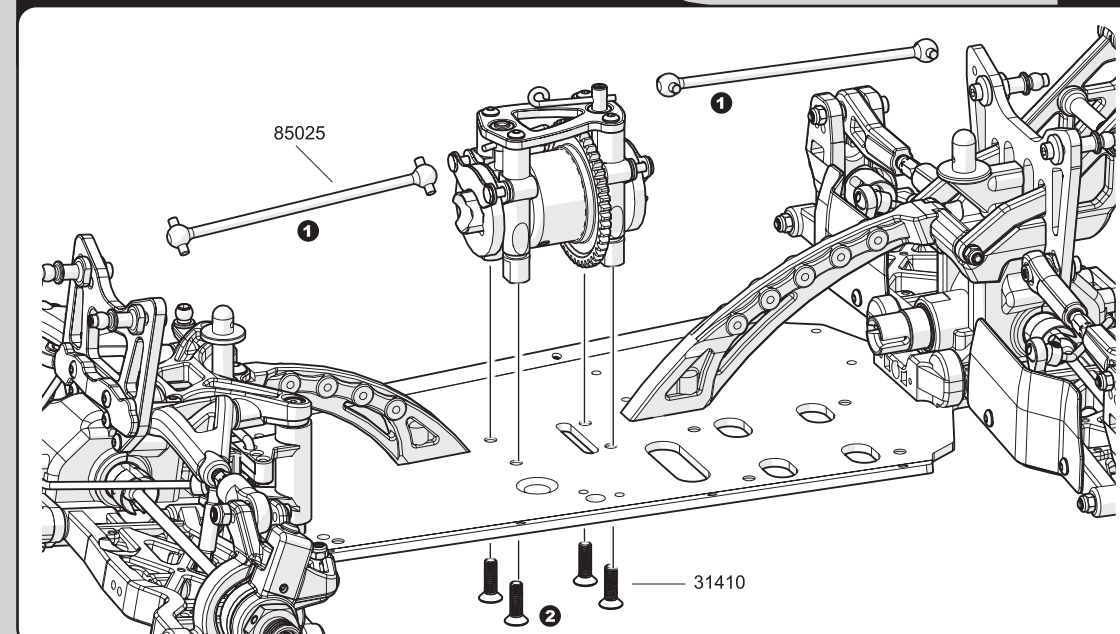
30



31410
4x10mm x4
F/H Screw

Center Differential Unit Assembly

GP



31

Battery Box Assembly

GP



35210
2x10mm x2
B/H Screw



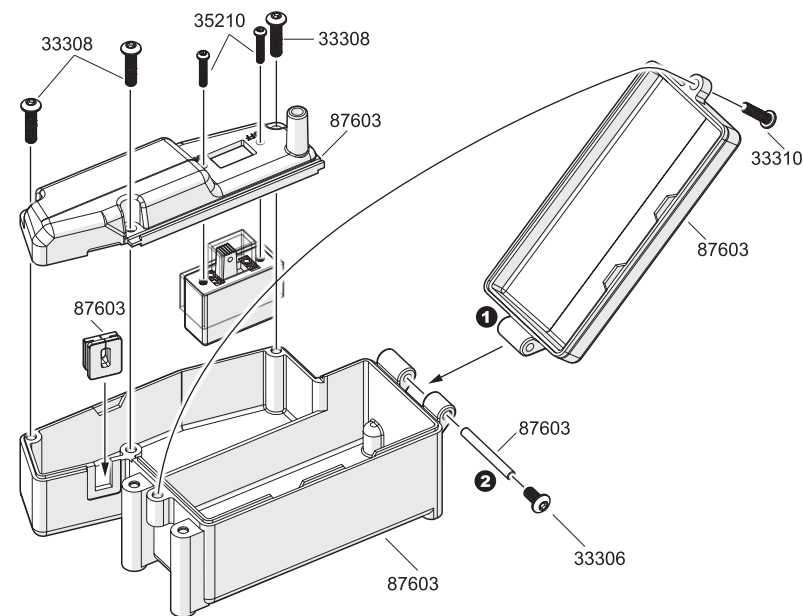
33306
3x6mm x1
B/H Screw



33308
3x8mm x3
B/H Screw



33310
3x10mm x1
B/H Screw



32

Radio Tray And Battery Cover Assembly

GP



33308
3x8mm x5
B/H Screw



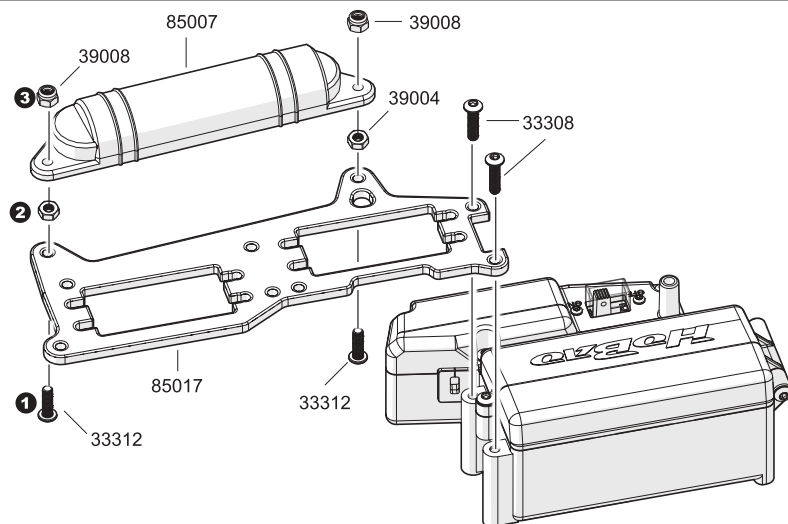
33312
3x12mm x2
B/H Screw



39008
M3 Nylon Nut x2



39004
M3 Nut x2



33

Servo Horn / Mounting Holder Assembly

GP



35208
2x8mm x2
B/H Screw



33308
3x8mm x1
B/H Screw



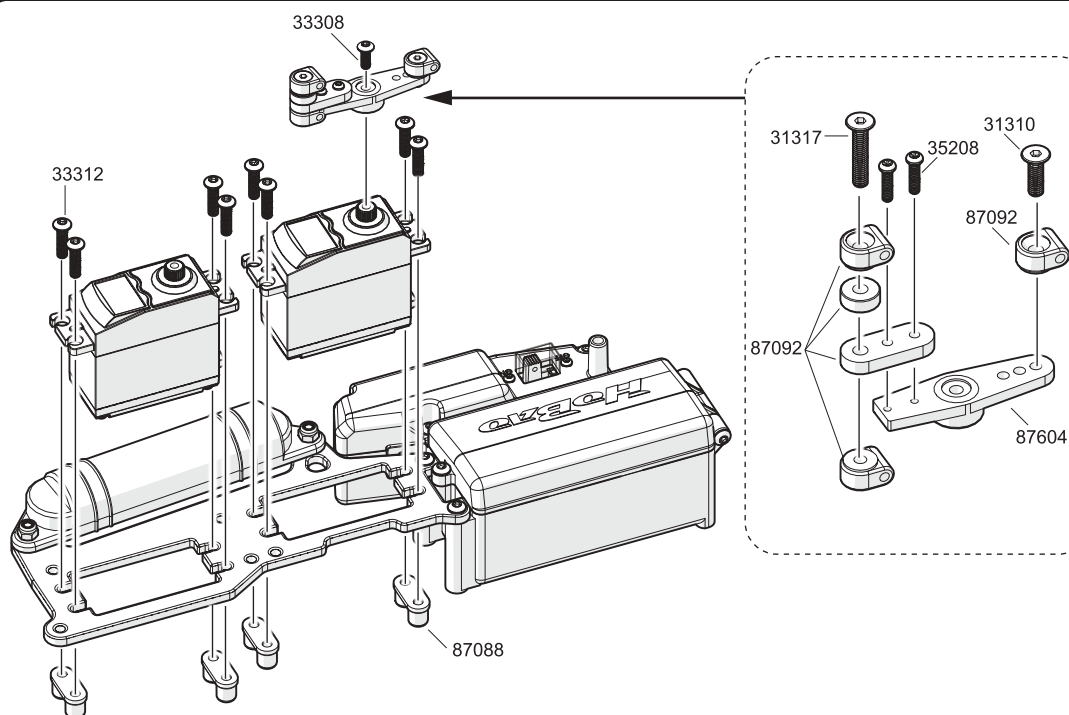
33312
3x12mm x8
B/H Screw



31310
3x10mm x1
F/H Screw



31317
3x17mm x1
F/H Screw



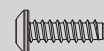
34

Air Filter Holder And Radio Tray Post Assembly

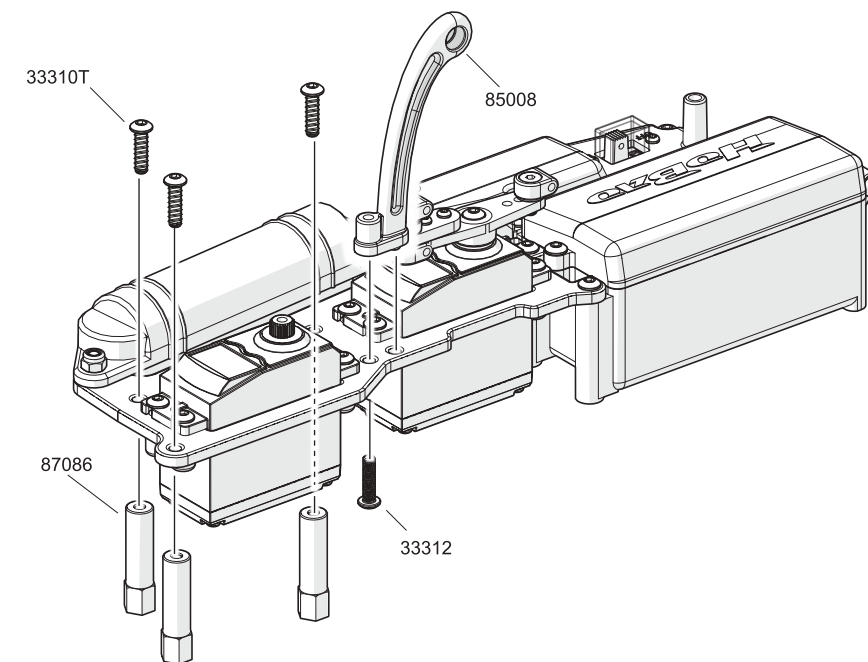
GP



33312
3x12mm x1
B/H Screw



33310T
3x10mm x3
B/H Tap Screw



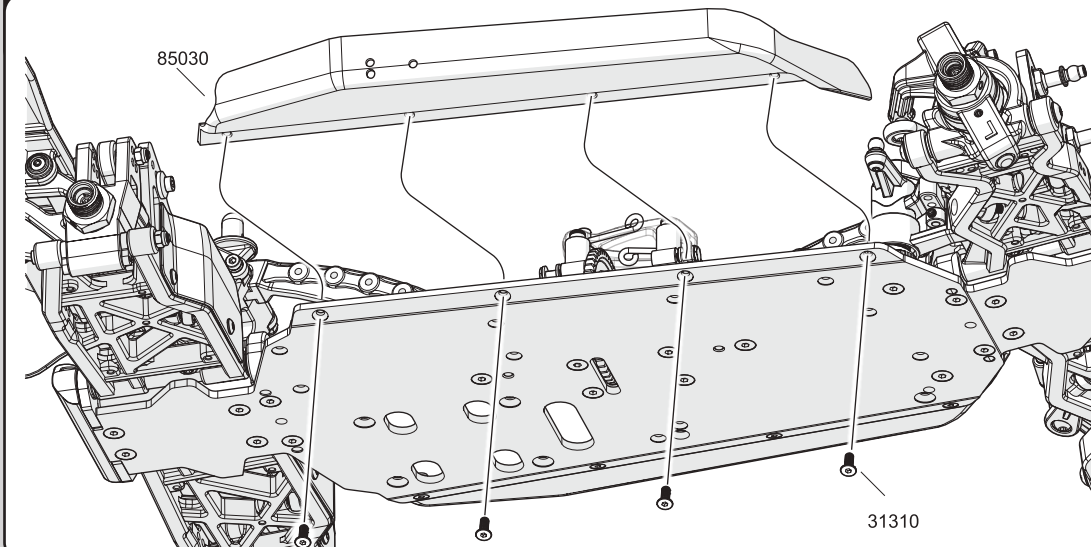
35

Side Guard Assembly

GP & EP



31310
3x10mm x8
F/H Screw



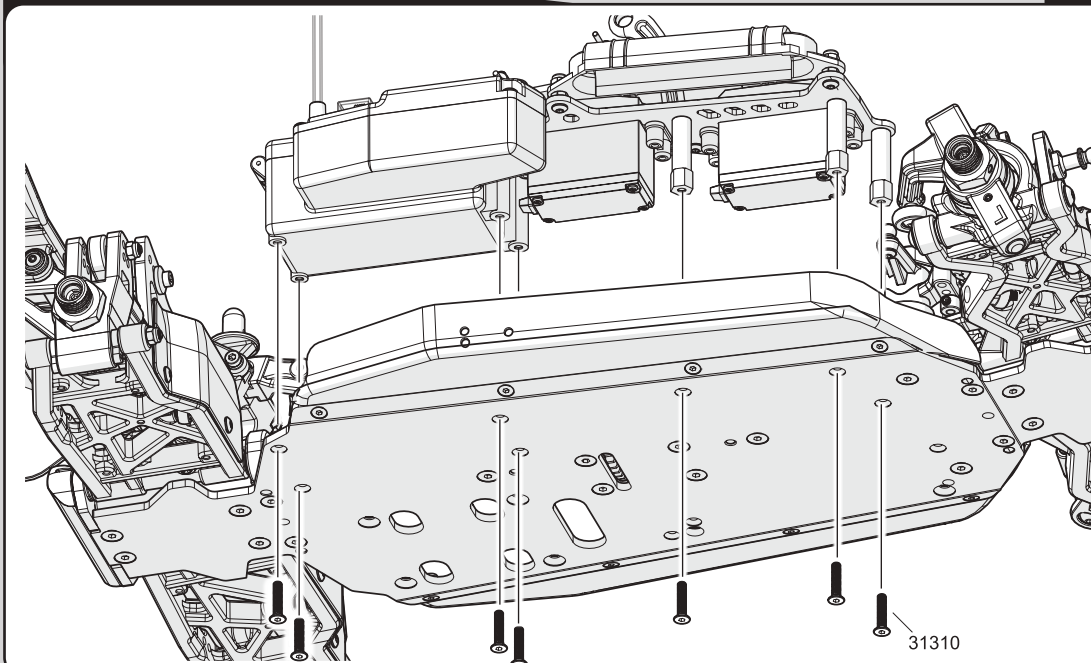
36

Radio Tray Unit Assembly

GP



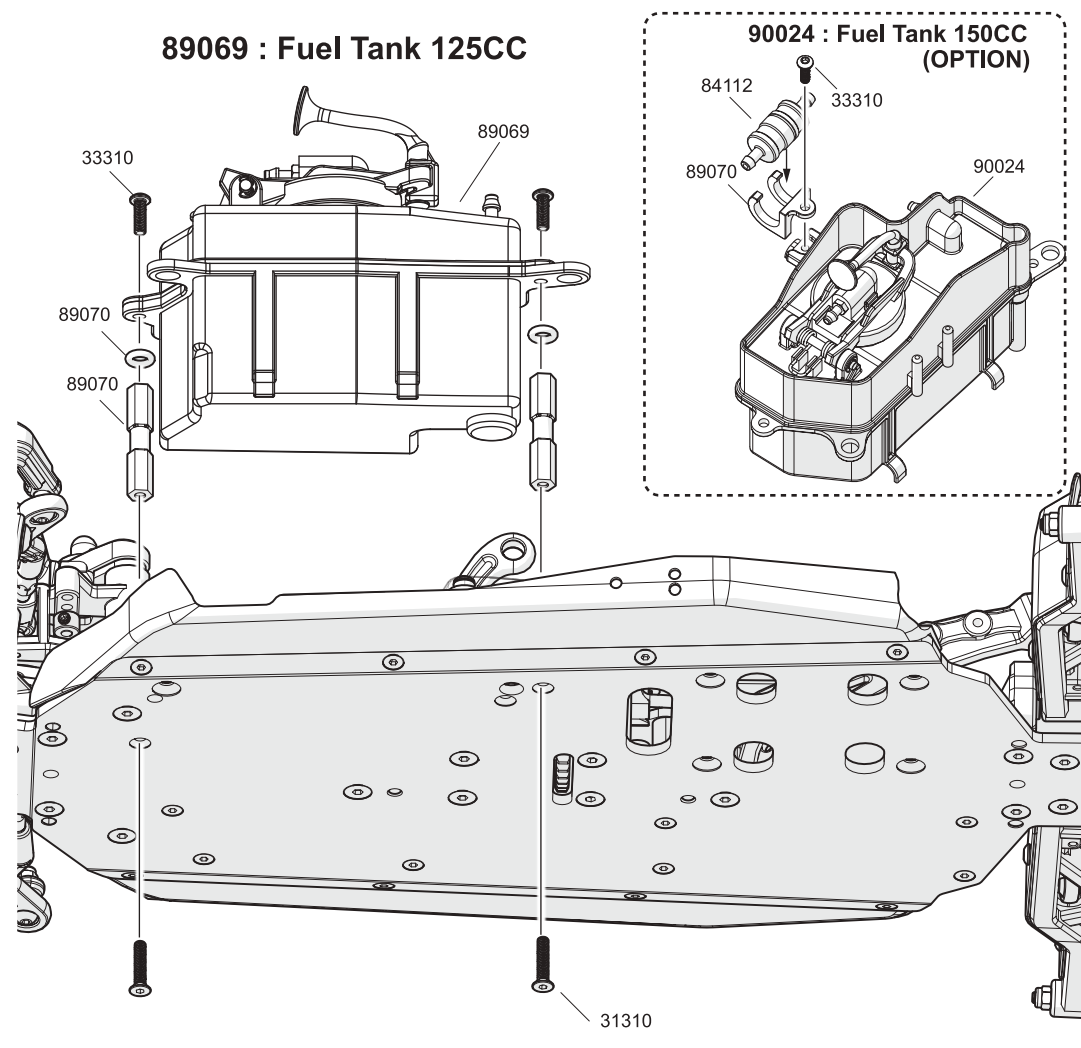
31310
3x10mm x7
F/H Screw



37

Fuel Tank Assembly

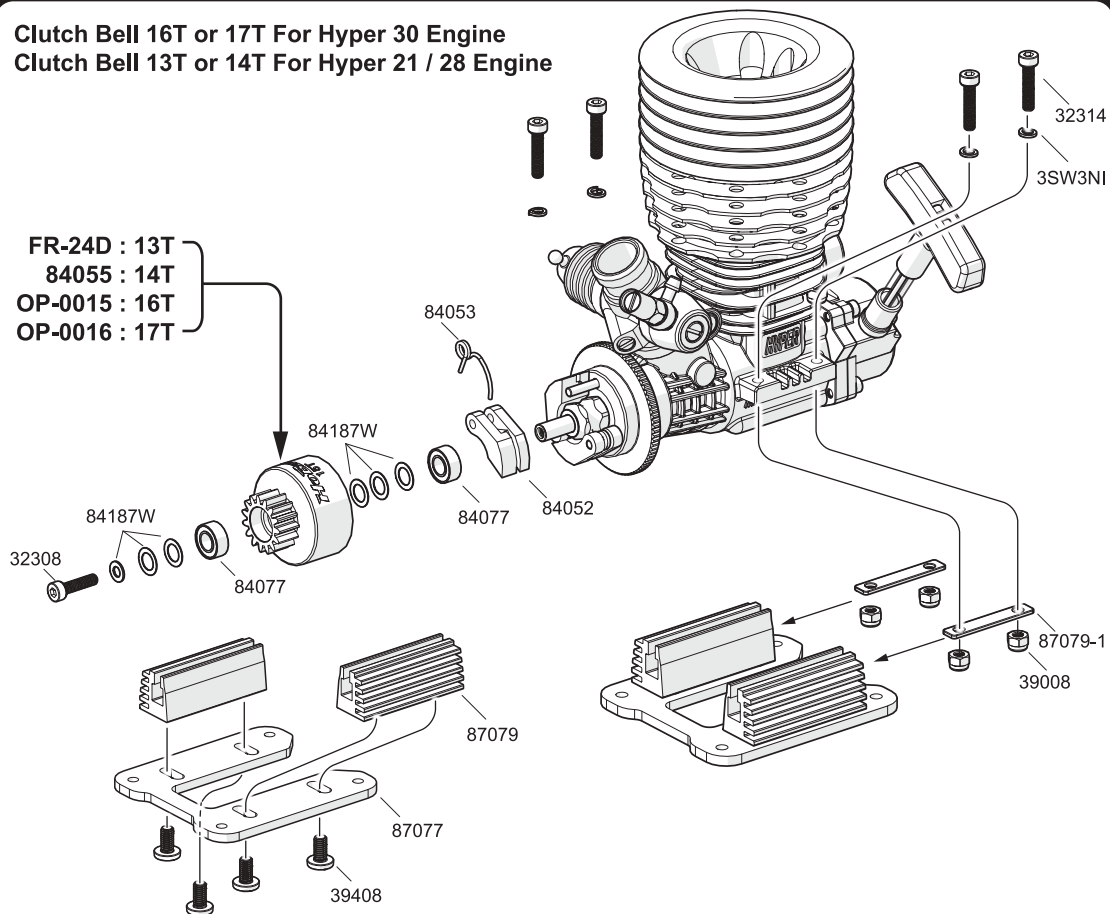
GP



38

Engine Mount / Clutch Assembly

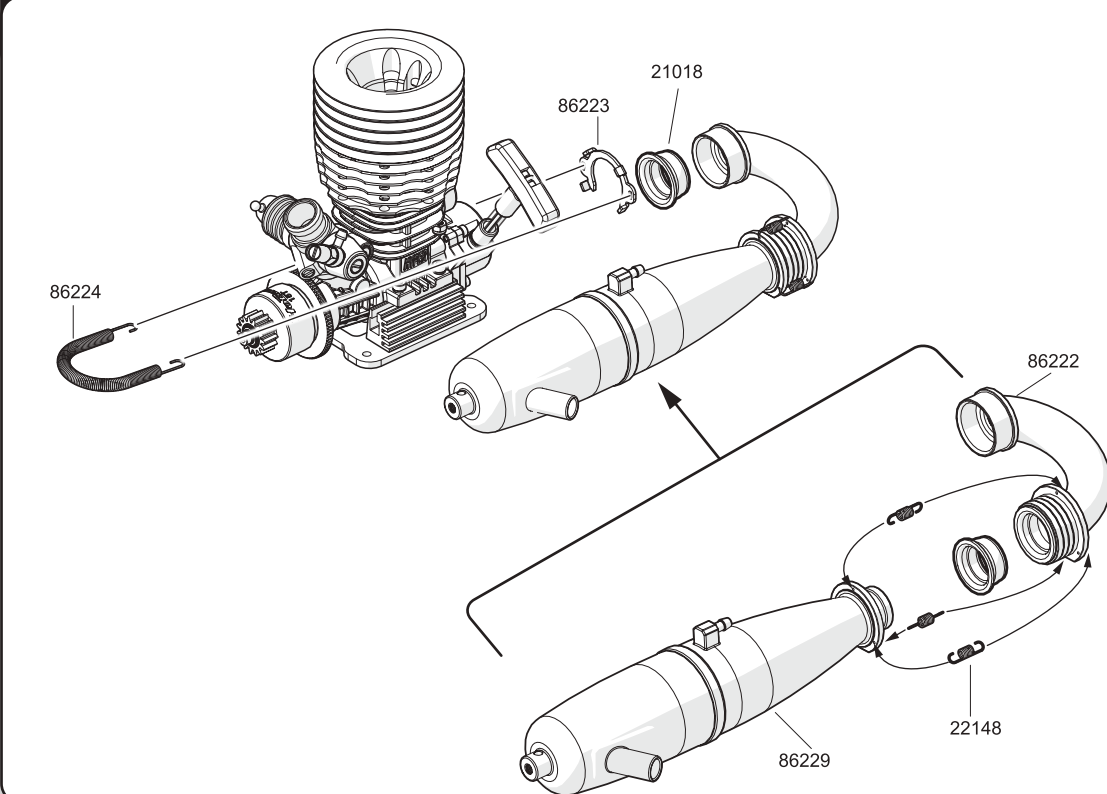
GP



39

In-Line Muffler And Manifold Assembly

GP

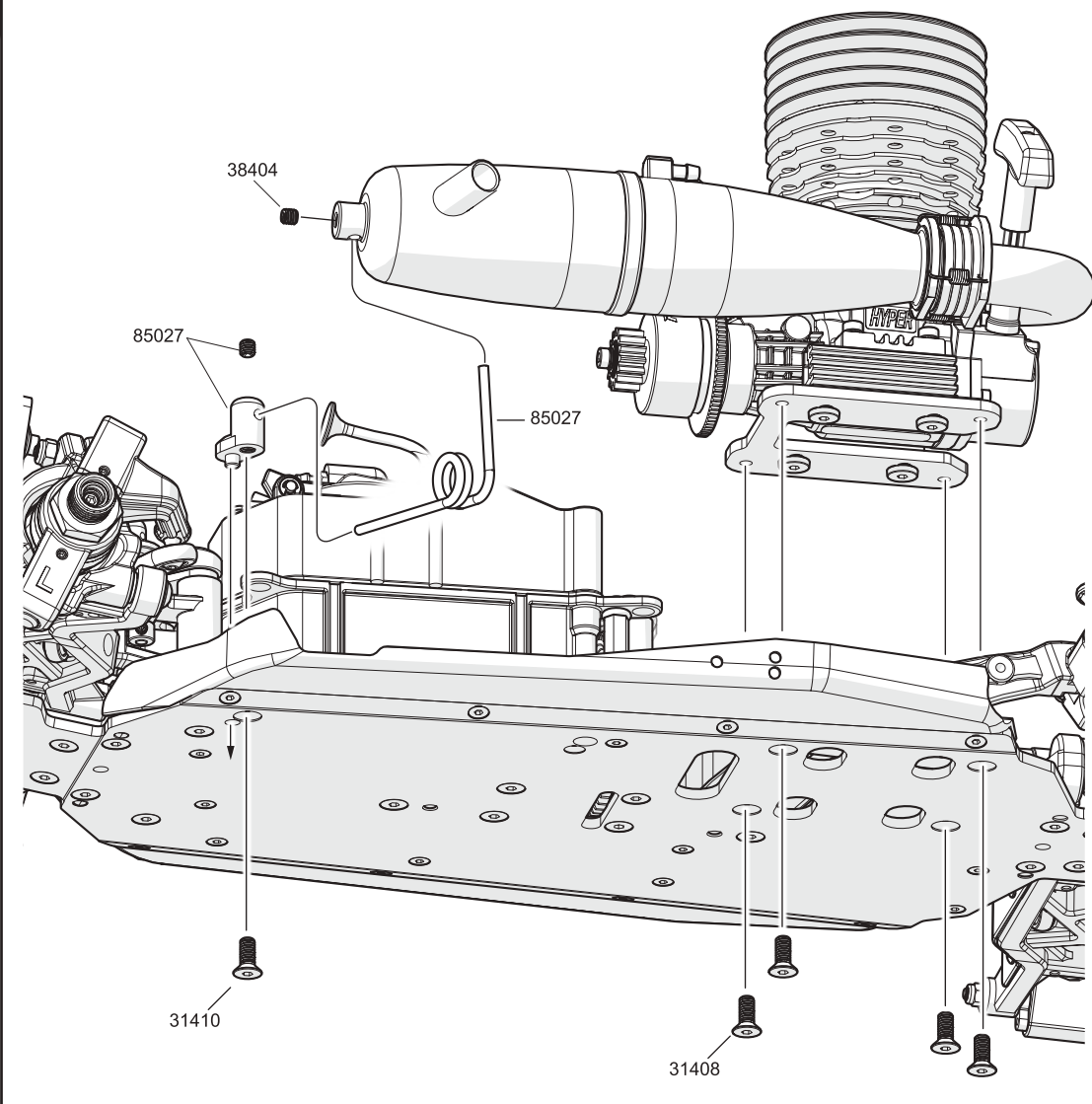


40

Engine Unit / Exhaust System Assembly

GP

- 31408 4x8mm x4 F/H Screw
- 31410 4x10mm x1 F/H Screw
- 38404 4x4mm x2 Set Screw



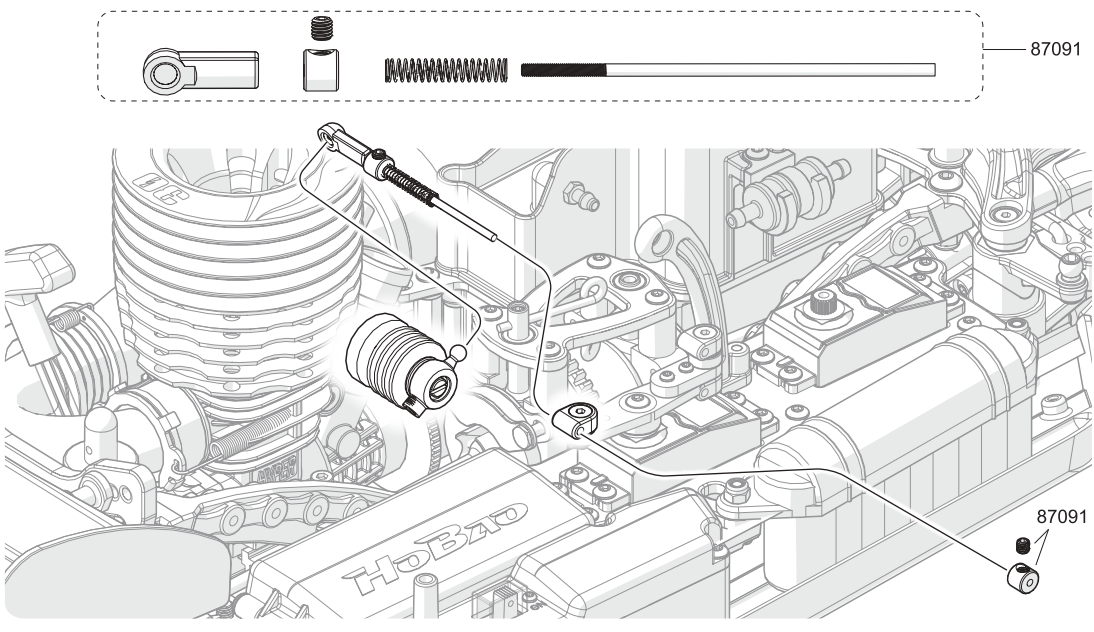
41

Throttle Link Assembly

GP



38303
3x3mm x2
Set Screw



42

Steering / Brake Link Assembly

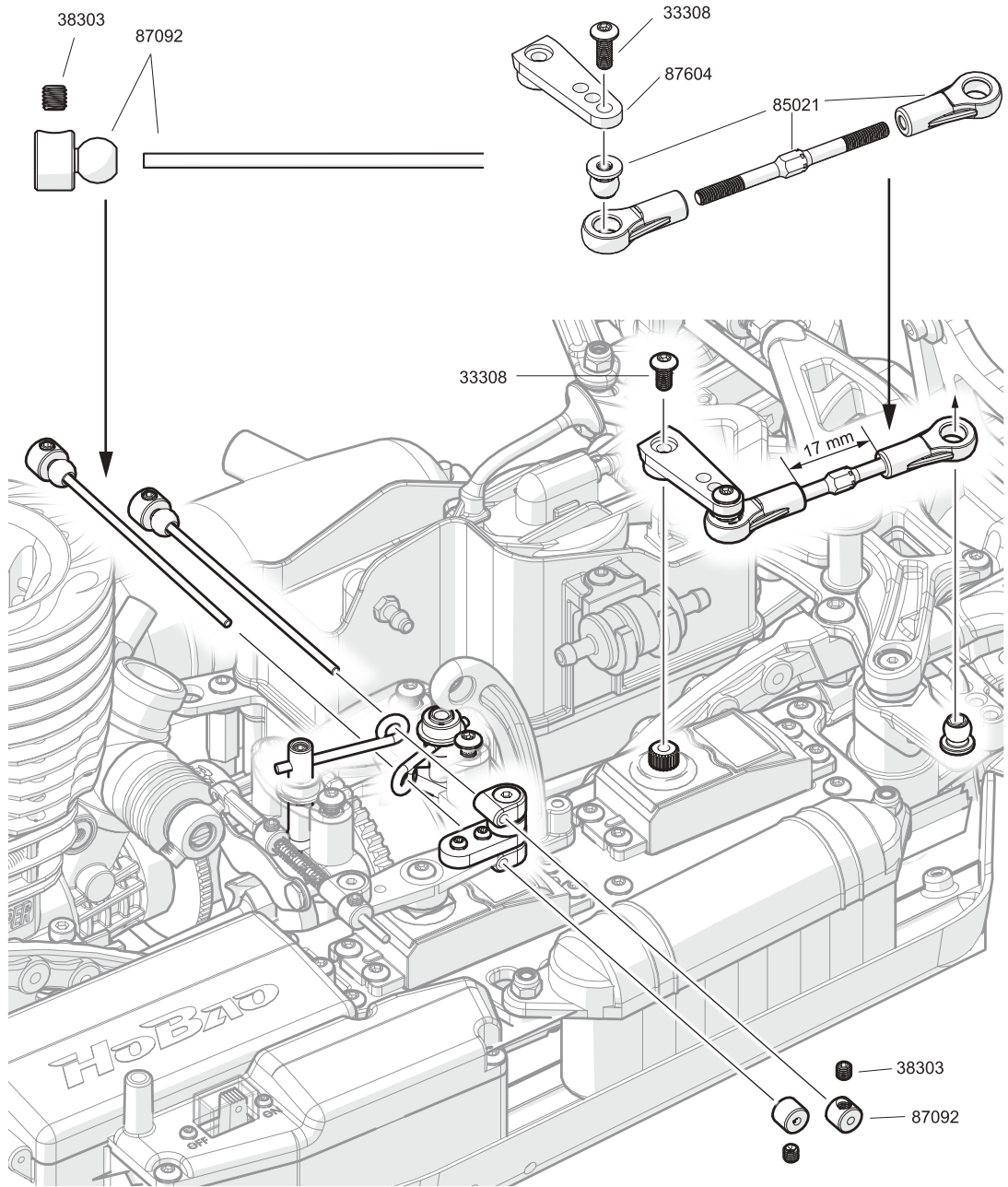
GP



33308
3x8mm x2
B/H Screw



38303
3x3mm x4
Set Screw



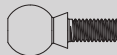
43

Air Filter And Holder Assembly

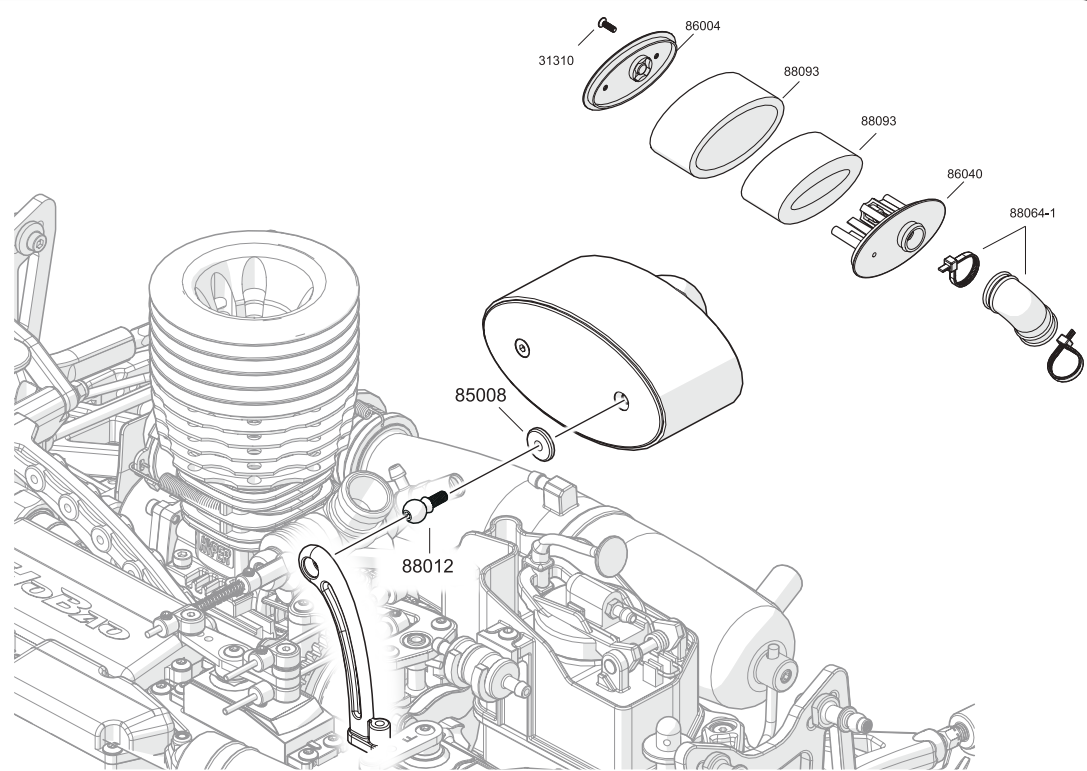
GP



31310
3x10mm x1
F/H Screw



88012
6.8mm x1



44

Front / Rear Shock Absorber Assembly

GP & EP



90030
M2.6 Nut x4



90030
3.1x7x0.25mm x4
Washer



90036
O-ring Shield



90036
4x8mm x8
O-Ring

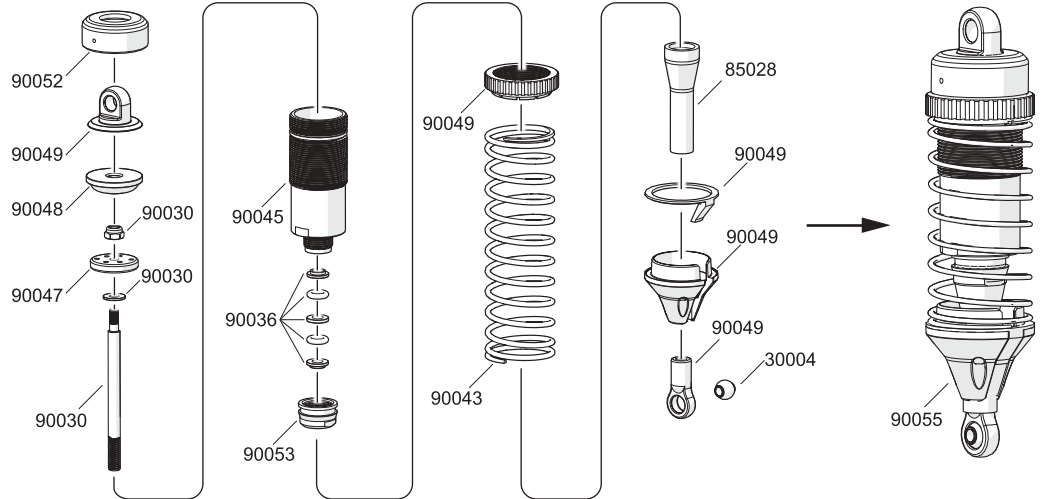


90036
4.05x7.98x1.2mm x4
Washer

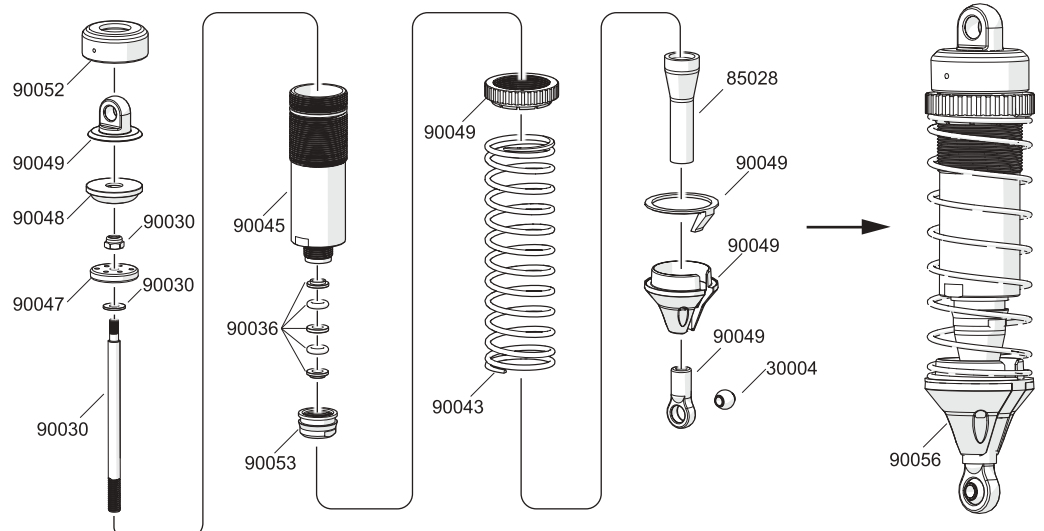


30004
6.8mm x4
Ball

Front



Rear



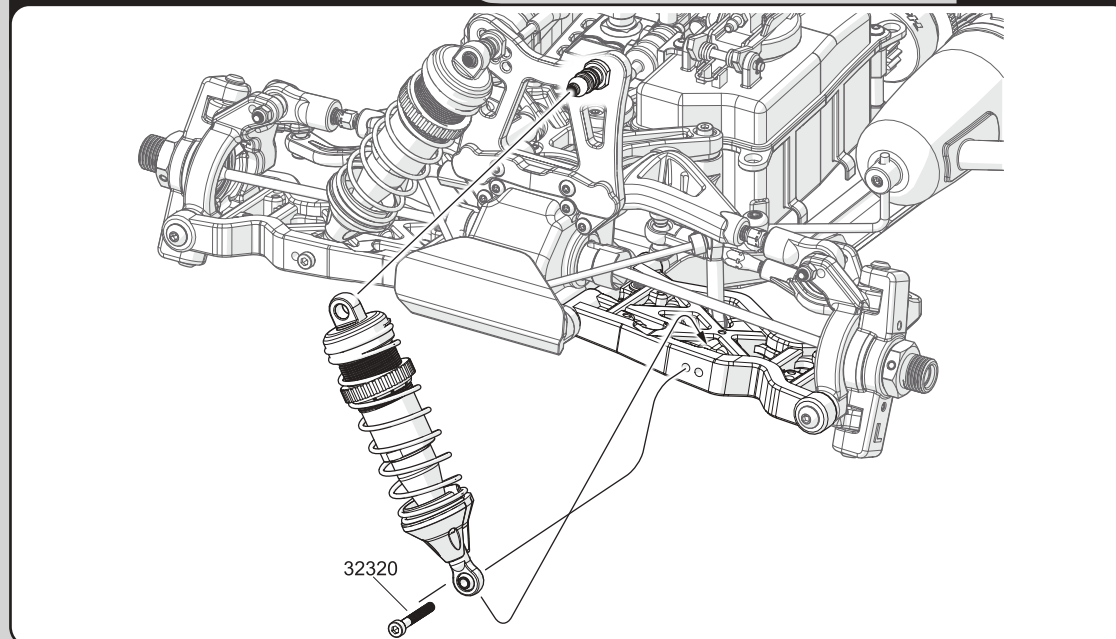
45

Front Shock Assembly

GP & EP



32320
3x20mm x4
Cap Screw



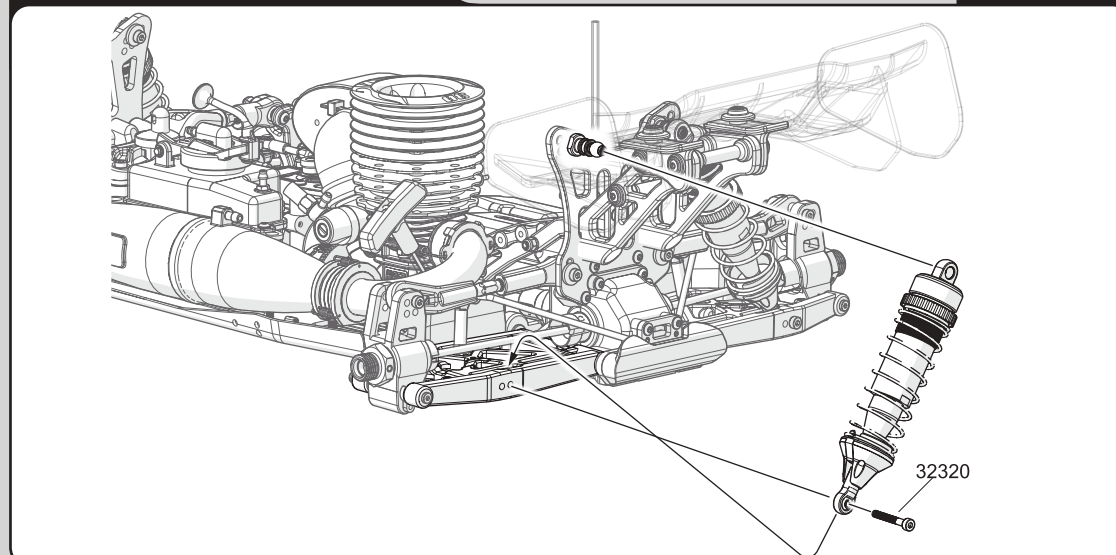
46

Rear Shock Assembly

GP & EP



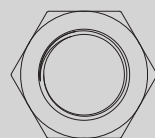
32320
3x20mm x4
Cap Screw



47

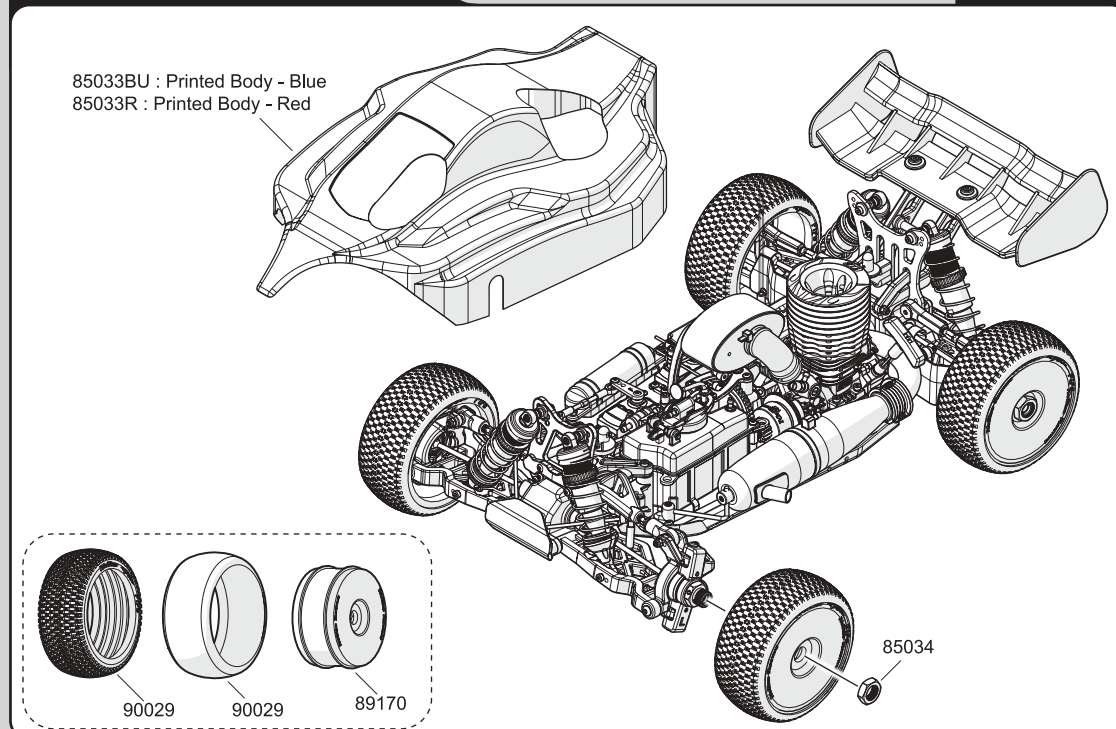
Rear Shock Assembly

GP & EP



85034
Wheel Hex Nut x4

85033BU : Printed Body - Blue
85033R : Printed Body - Red



01



33310
3x10mm x4
B/H Screw



32312
3x12mm x4
Cap Screw



38404
4x4mm x1
Set Screw

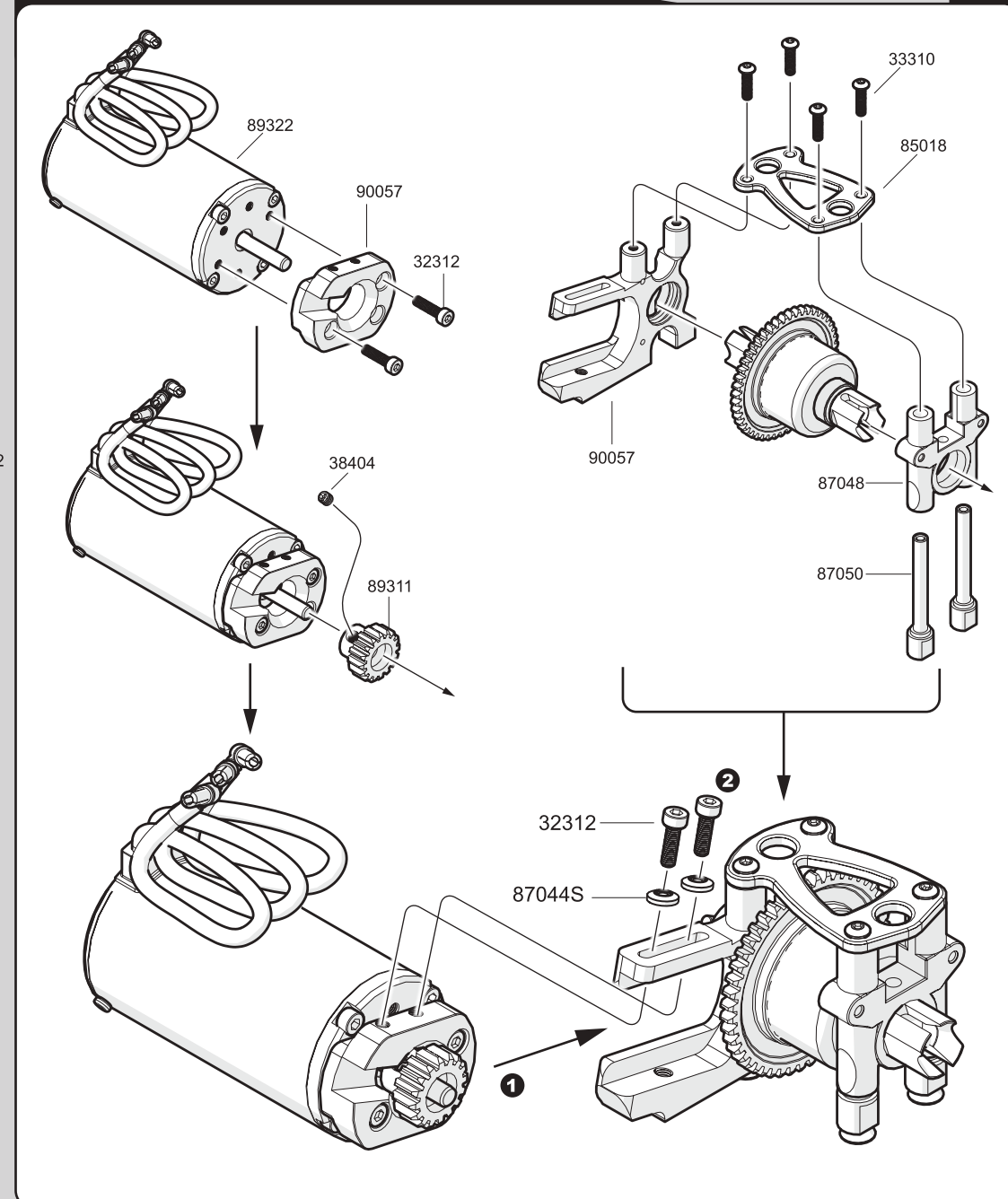


87044S
Alum Collar x2

HYPERVSe ELECTRIC ASSEMBLY

Center Differential / Motor Assembly

EP



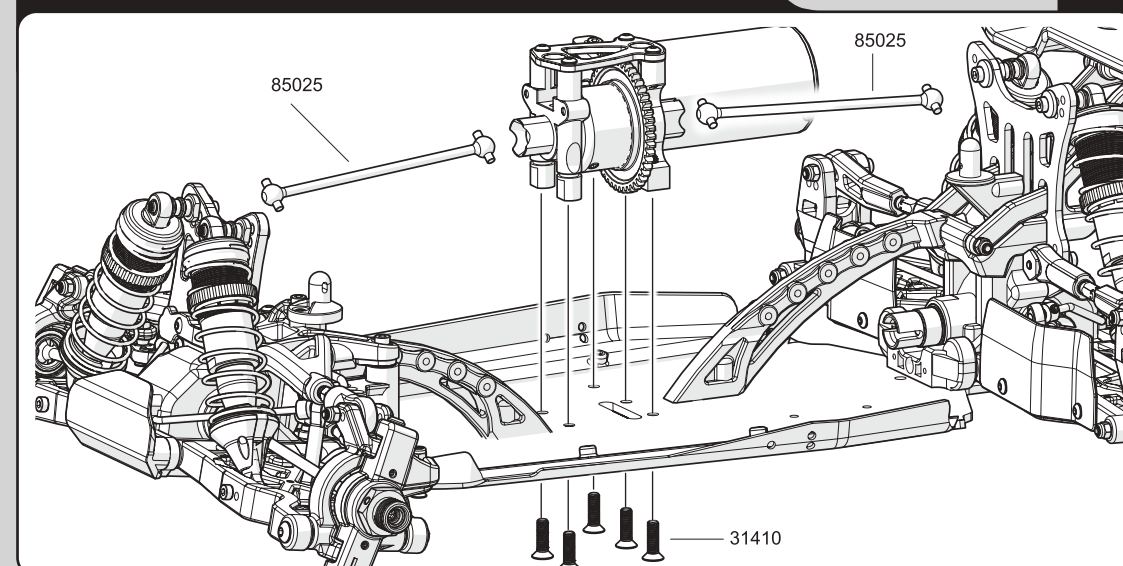
02



31410
4x10mm x5
F/H Screw

Center Drivetrain & Motor Unit Assembly

EP



03

Receive Box & Steering Servo Assembly

EP



33308
3x8mm x2
B/H Screw



33312
3x12mm x4
B/H Screw



33310
3x10mm x2
B/H Screw



33315
3x15mm x2
B/H Screw

04

Steering Servo Link Assembly

EP



31310
3x10mm x4
F/H Screw

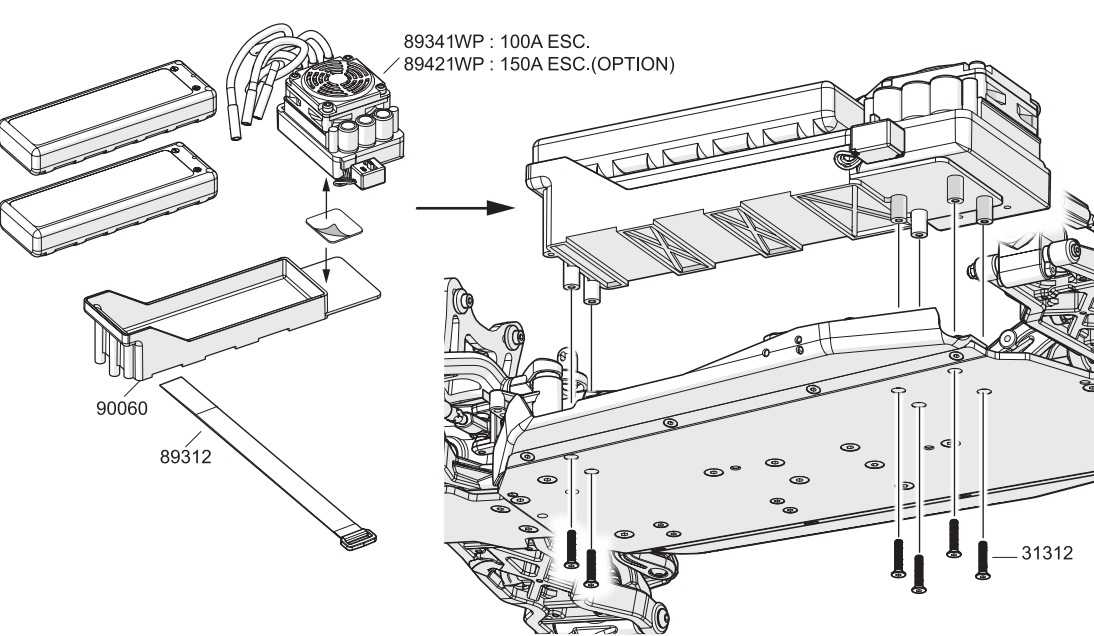
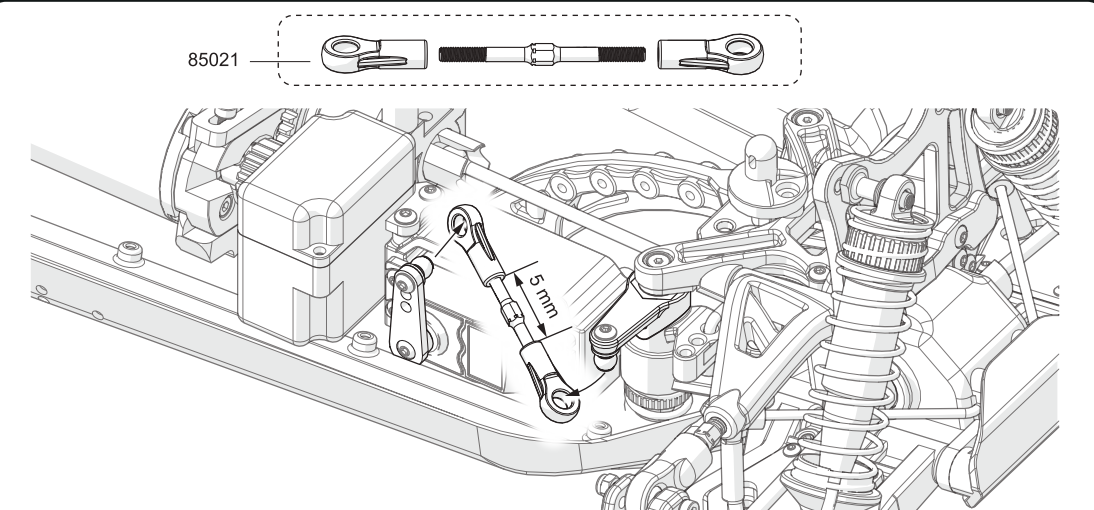
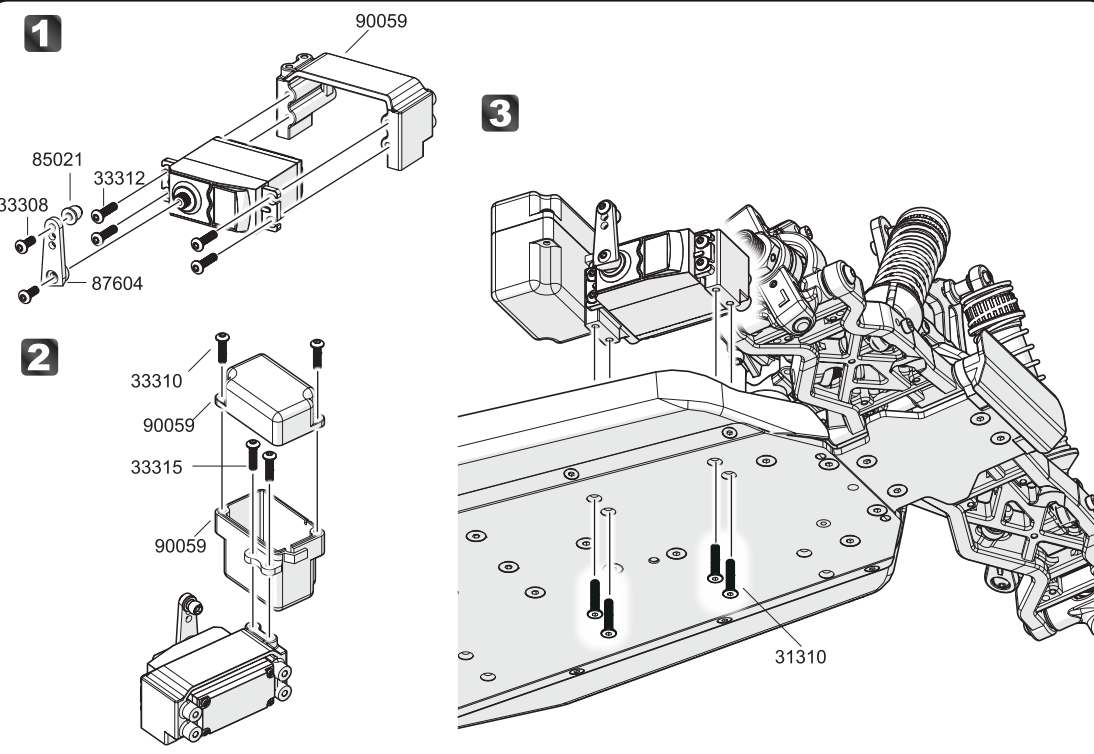
05

Electric Speed Controller / Battery Tray Unit Assembly

EP



31312
3x12mm x6
F/H Screw



HYPERVS

NITRO STANDARD PARTS LIST

87001 	87046 	87338 	88029 	89107 	89143 	90035
87002 	87048 	87562 	88030 	89170 	90036 	90038
87003 	87050 	87603 	88031 	90004 	90038 	90038
87004 	87054 	87604 	88034 	90005 	90043 	90044
87005-1 	87005-2 	88001 	88039 	90006 	90045 	90046
87006 	87079 	88002 	88064-1 	90010 	90047 	90048
87021 	87079-1 	88003 	88093 	90028 	90049 	90049
87027-1 	87086 	88004 	89037 	90029 	90050 	90050
87028 	87091 	88012 	89069 	90030 	90052 	90053
87037 	87044S 	88013 	89070 	90031 	90054 	90054