

MST
MAX SPEED TECHNOLOGY



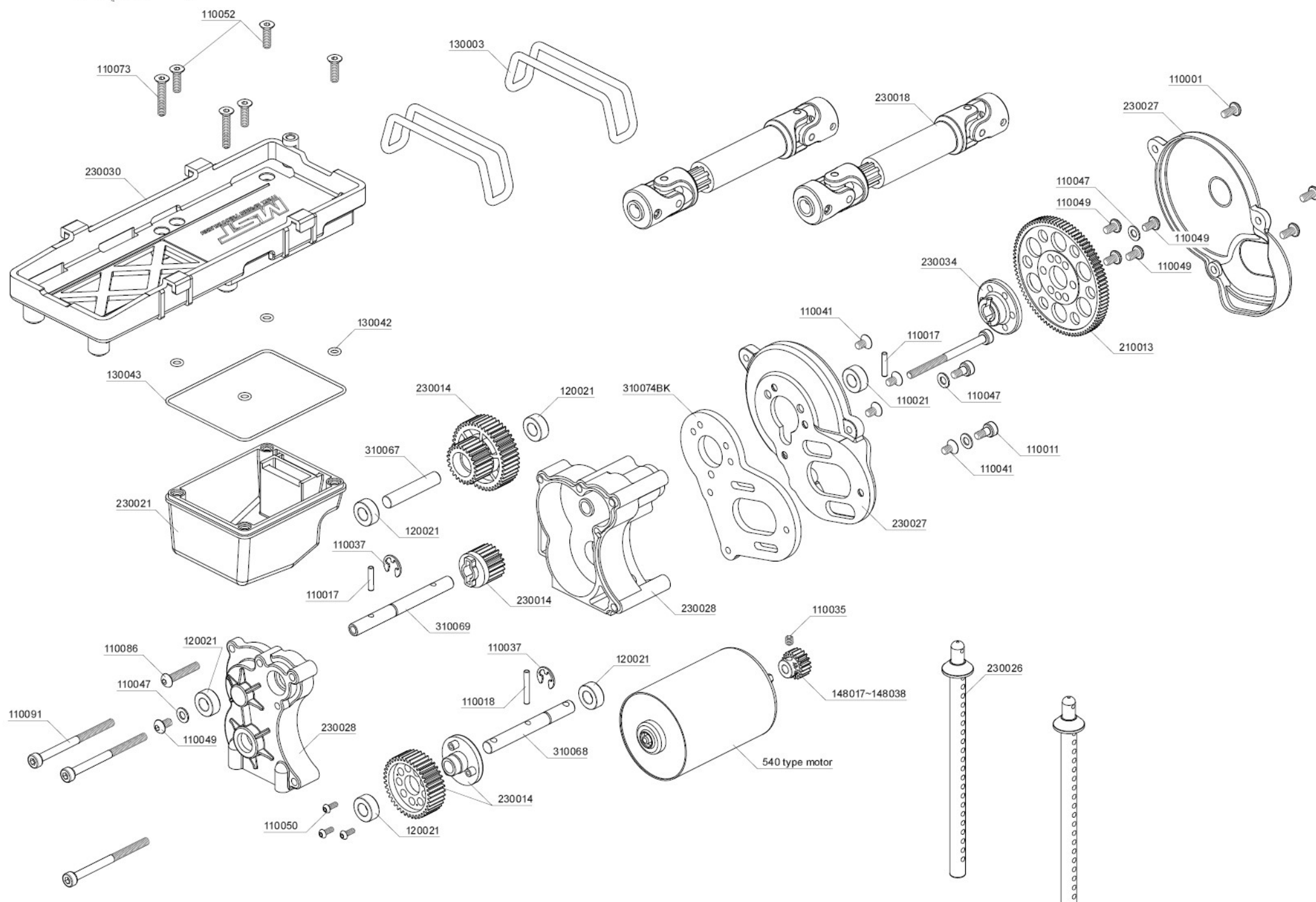
GMR
OFF ROAD
1/10 RC 4WD HIGH PERFORMANCE OFF ROAD CAR

WWW.RC-MST.COM

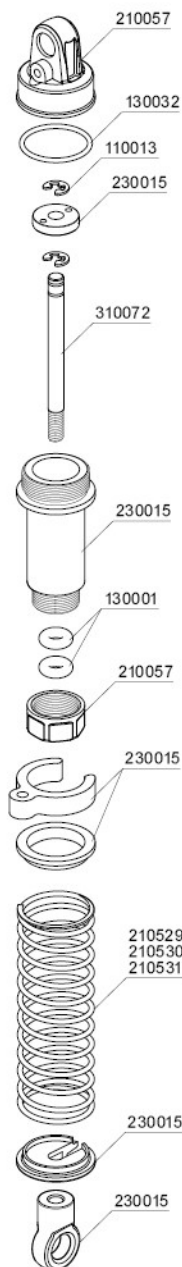
*SPECIFICATION ARE SUBJECT TO CHANGE WITHOUT NOTICE

**EXPLODED
MANUAL**

WHEELBASE : 242 / 252 / 267mm [adjustable]
※ Additional parts are required to 267mm setting
WIDTH : 195mm
GEAR RATIO = 1:19 ~ 1:42.6
TIRE WIDTH / DIAMETER : 30×90mm

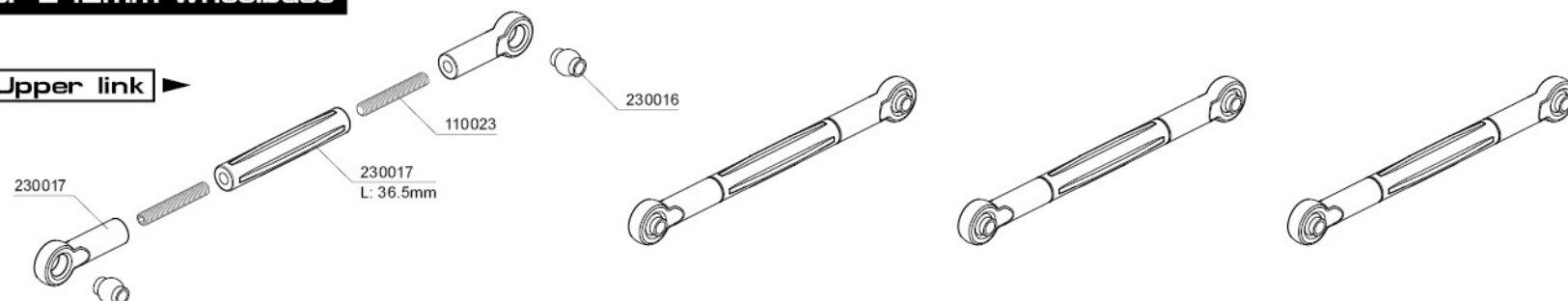




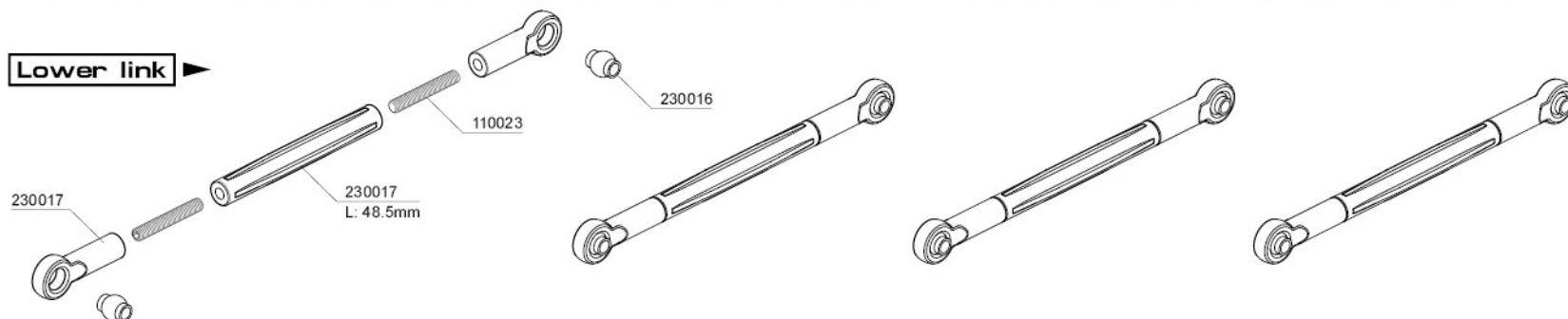


For 242mm wheelbase

Upper link

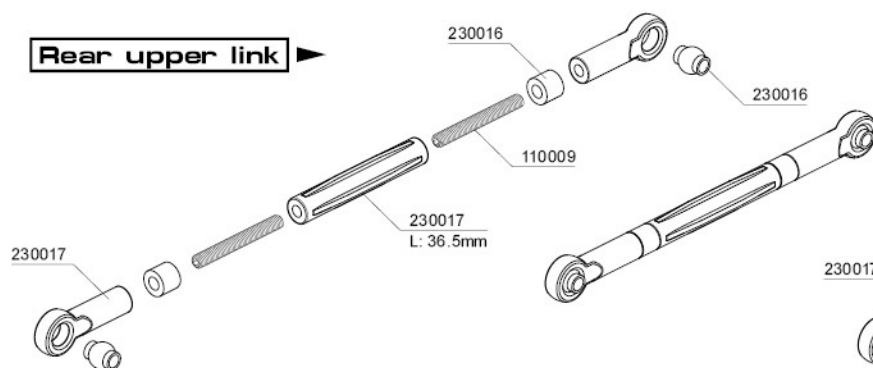


Lower link

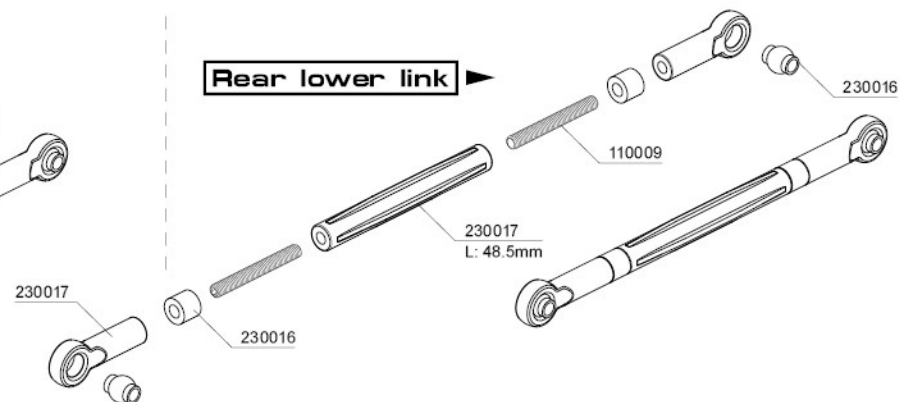


For 252mm wheelbase

Rear upper link

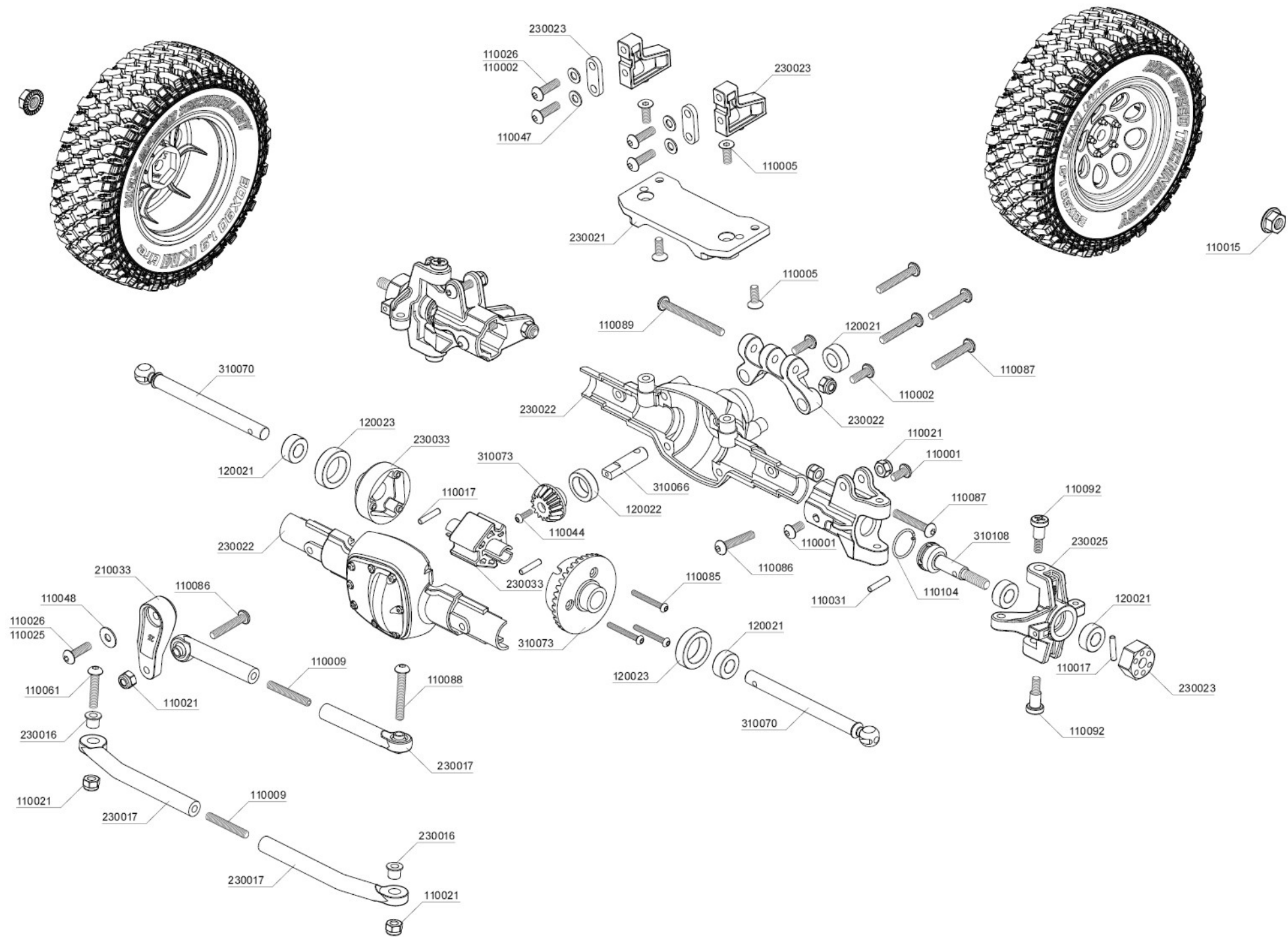


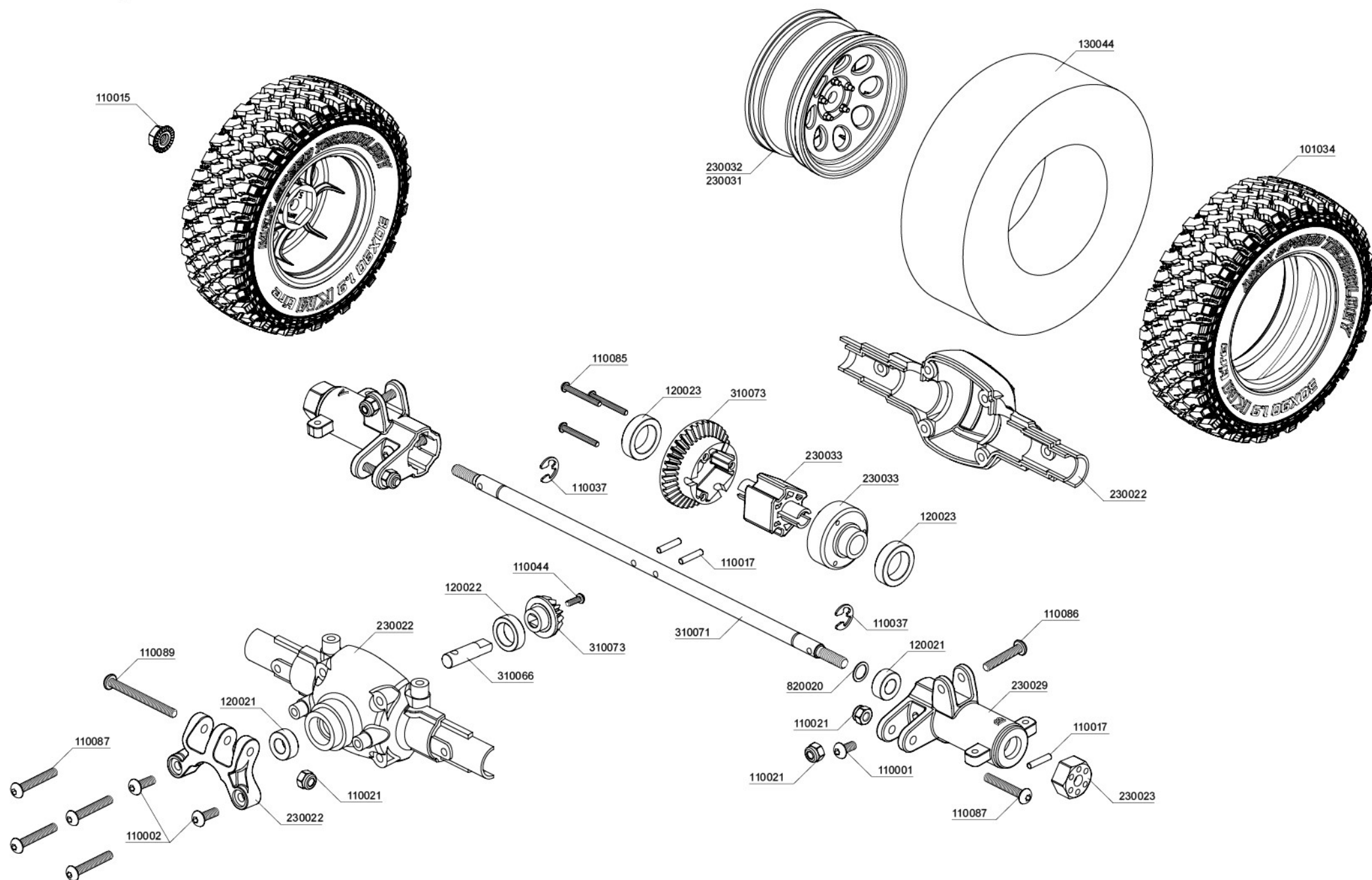
Rear lower link



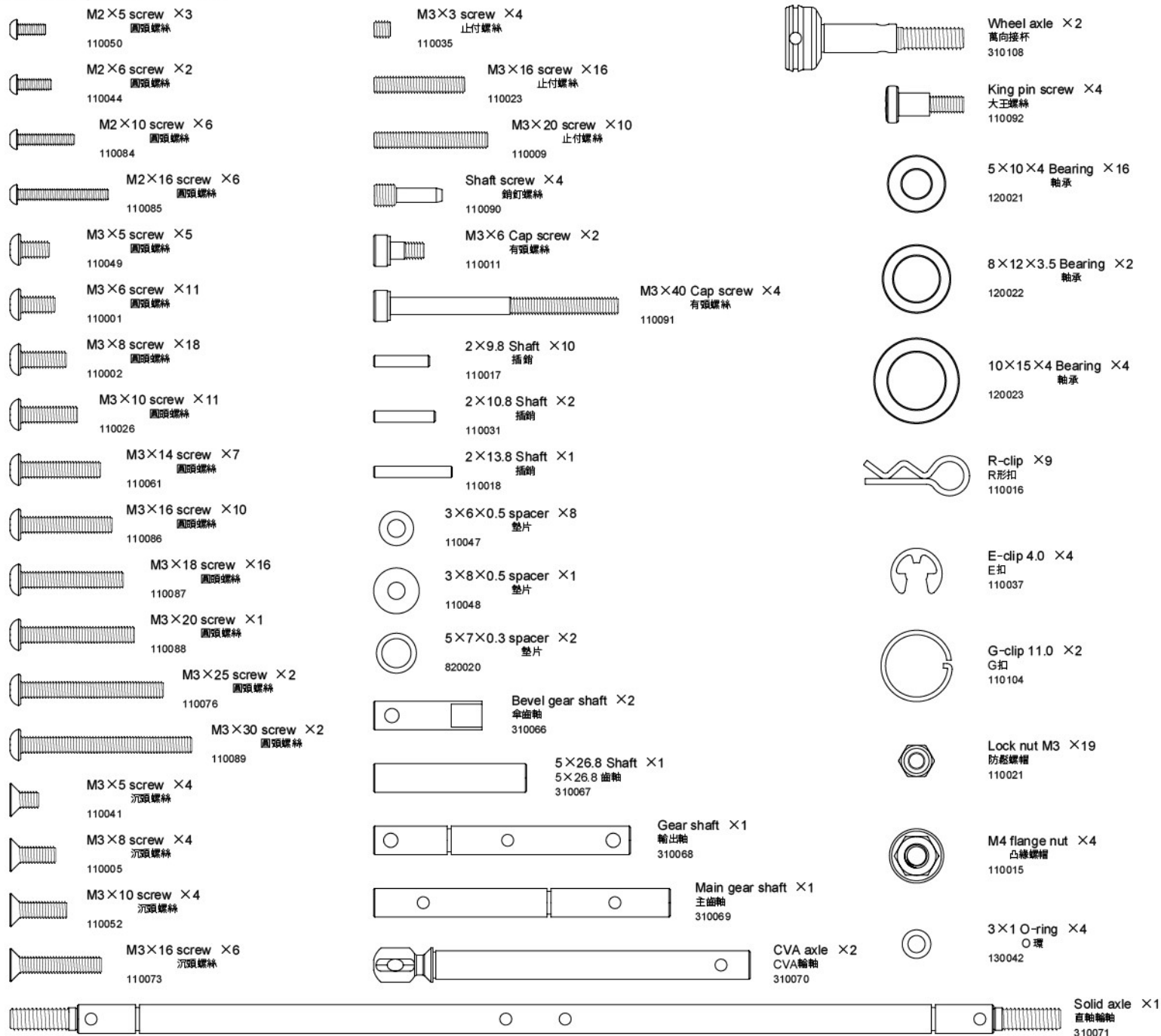
For 267mm wheelbase

※ Extra parts are required for 267 wheelbase.
需要額外的配件變更軸距為267mm。
230039 CMX Wheelbase 267mm accessories.
CMX 軸距267mm 套件。

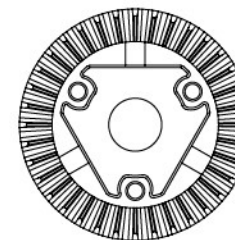
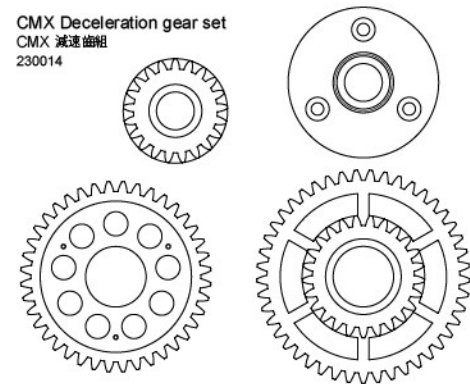




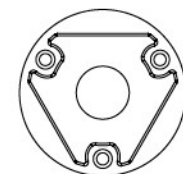
PARTS



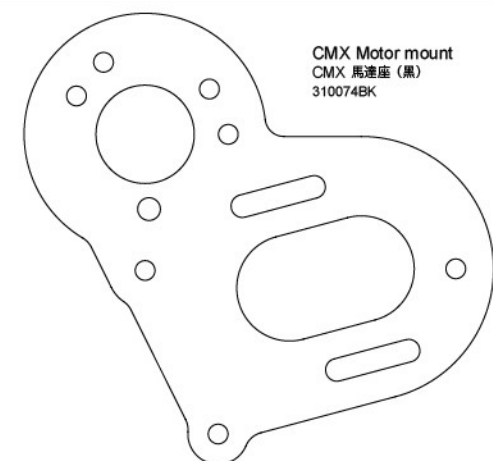
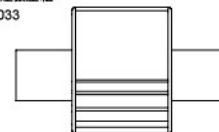
CMX Deceleration gear set
CMX 減速齒組
230014



Bevel gear set 36-15 ×2
傘齒組 36-15
310073

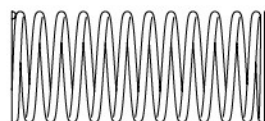


CMX Heavy duty locker set ×2
直軸連接座組
230033

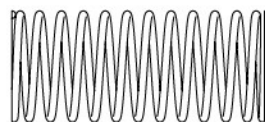


CMX Motor mount
CMX 馬達座 (黑)
310074BK

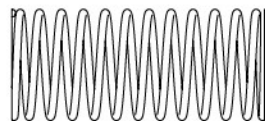
PARTS



Coil spring 45mm (hard)(silver) ×4
避震彈簧 45mm (硬)(銀)
210529



Coil spring 45mm (medium)(gold) ×4
避震彈簧 45mm (中)(金)
210530



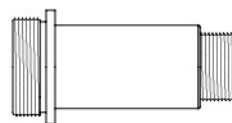
Coil spring 45mm (soft)(red) ×4
避震彈簧 45mm (軟)(紅)
210531



Piston rod ×4
避震軸心
310072



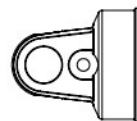
E-clip ×10
E扣
110013



Damper cylinder ×4
避震筒身
230015



Piston ×4
活塞
230015



Cylinder cap ×4
避震器上蓋
210057



Spring spacer ×4
彈簧調整扣 1mm
230015



Rod guide cap ×4
避震器下蓋
210057



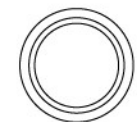
Spring spacer ×4
彈簧調整扣 2mm
230015



Damper retainer ×4
避震器彈簧座
230015



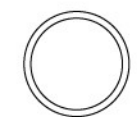
Spring spacer ×4
彈簧調整扣 4mm
230015



Spring holder ×4
彈簧托環
230015



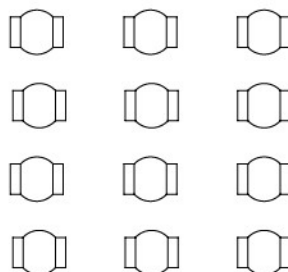
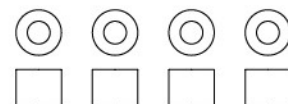
Damper adjuster ×4
避震器拉桿
230015



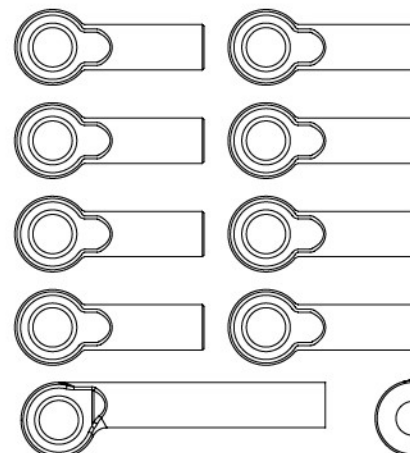
10.8×0.9 O-ring ×4
O環
130032



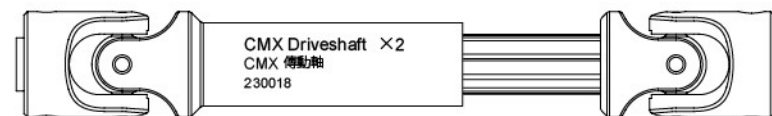
Damper O-ring P3 ×8
避震器O環
130001



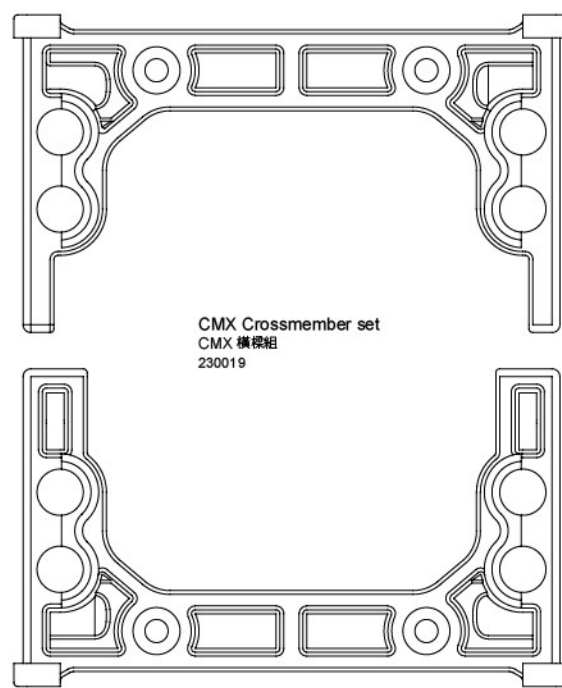
CMX Ball connector set ×2
CMX 球頭組
230016



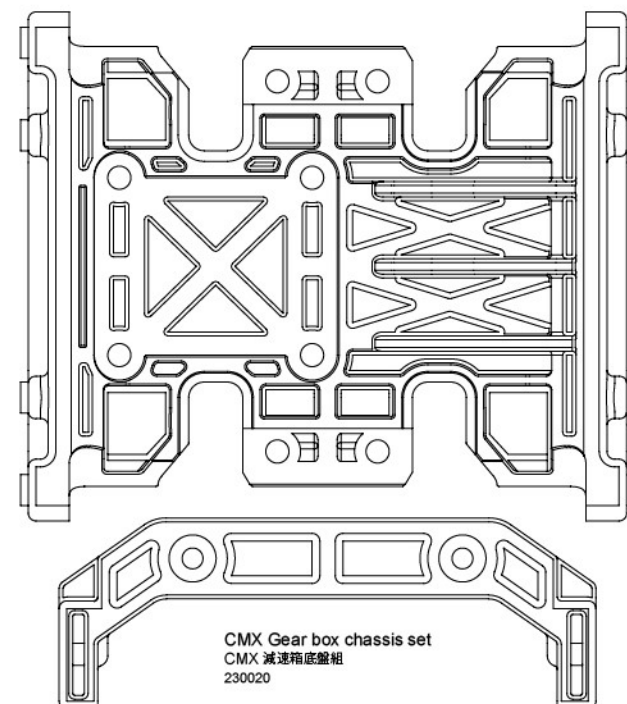
CMX Link set ×2
CMX 拉桿組
230017



CMX Driveshaft ×2
CMX 傳動軸
230018

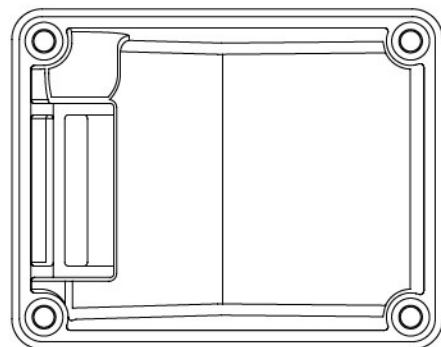
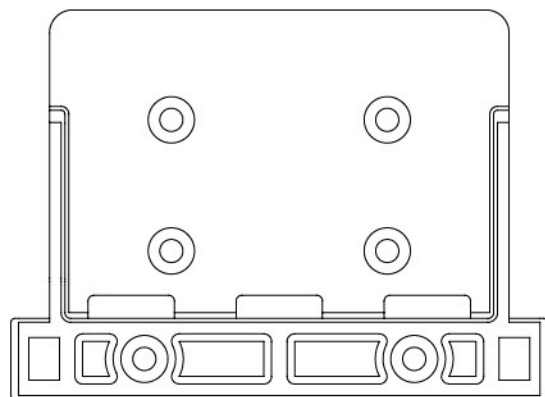


CMX Crossmember set
CMX 橫樑組
230019

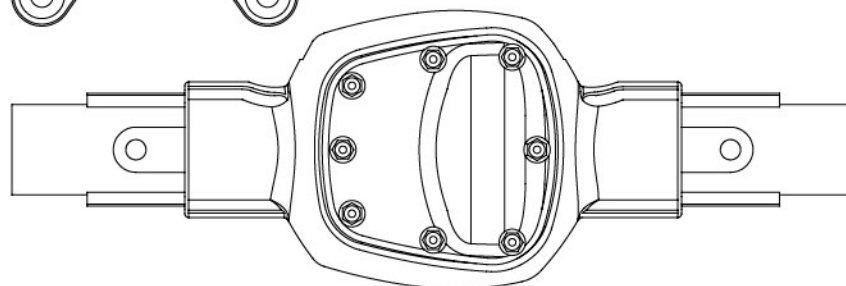
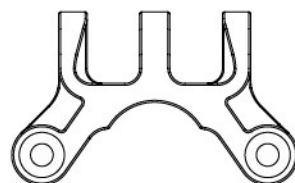
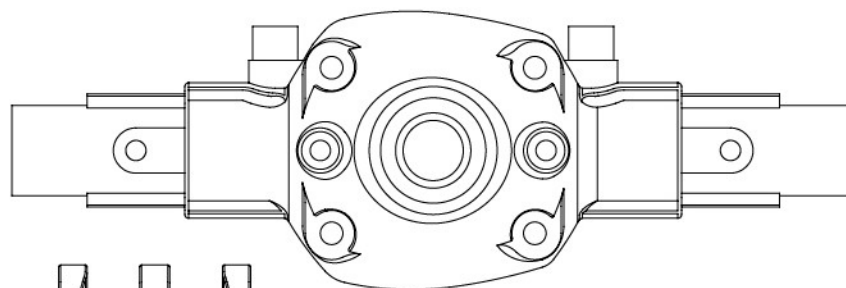


CMX Gear box chassis set
CMX 減速箱底盤組
230020

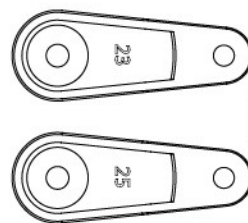
PARTS



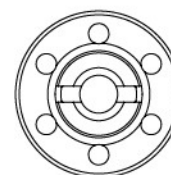
CMX Receiver case set
CMX 接收機盒組
230021



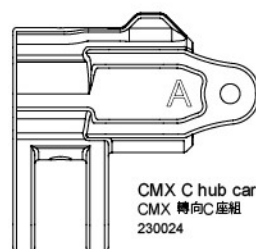
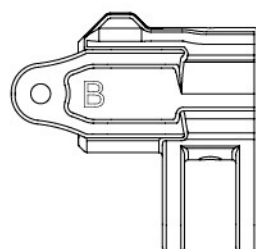
CMX Axle cover ×2
CMX 車軸殼
230022



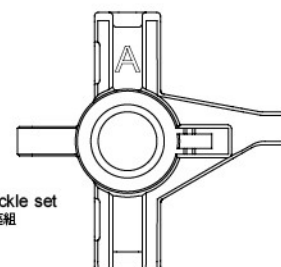
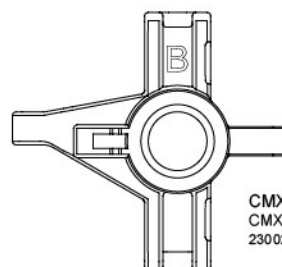
Servo horn set (long) (23T/25T)
伺服機舵片組-長 (23T/25T)
210033



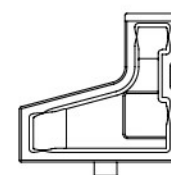
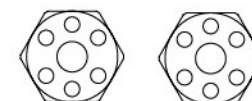
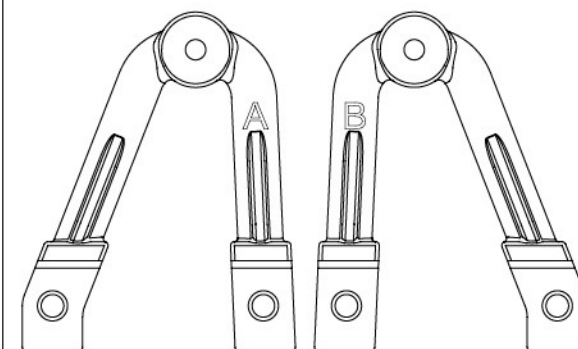
Spur gear holder
齒盤座
230034



CMX C hub carrier set
CMX 轉向C座組
230024

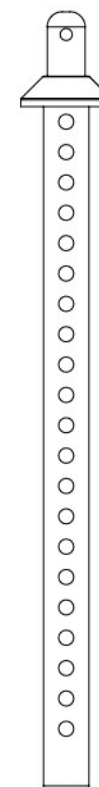
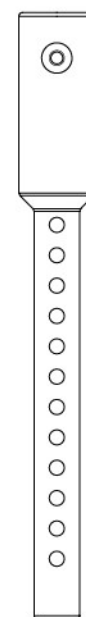
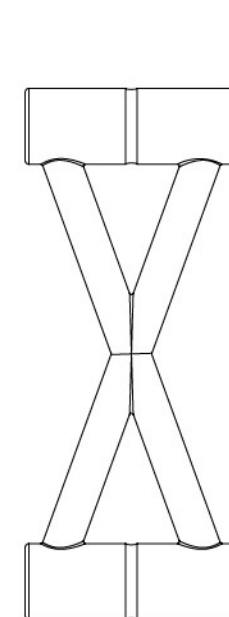


CMX Knuckle set
CMX 轉向座組
230025

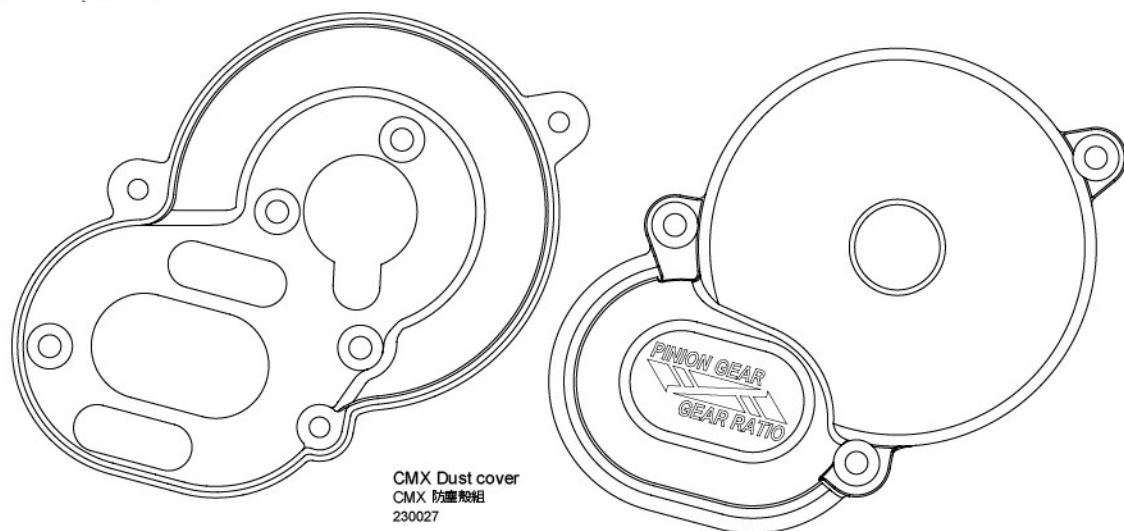


CMX Damper stay set ×2
CMX 避震架組
230023

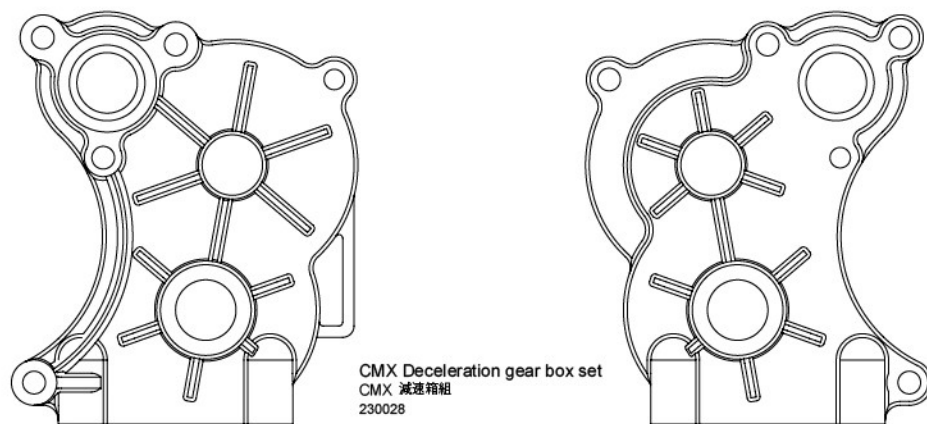
CMX Car body post set ×2
CMX 車殼支柱組
230026



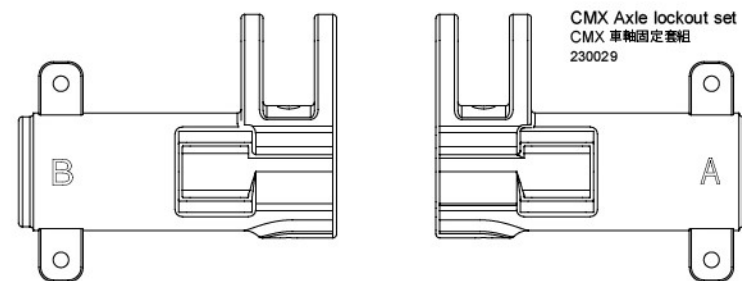
PARTS



CMX Dust cover
CMX 防塵殼組
230027



CMX Deceleration gear box set
CMX 減速箱組
230028

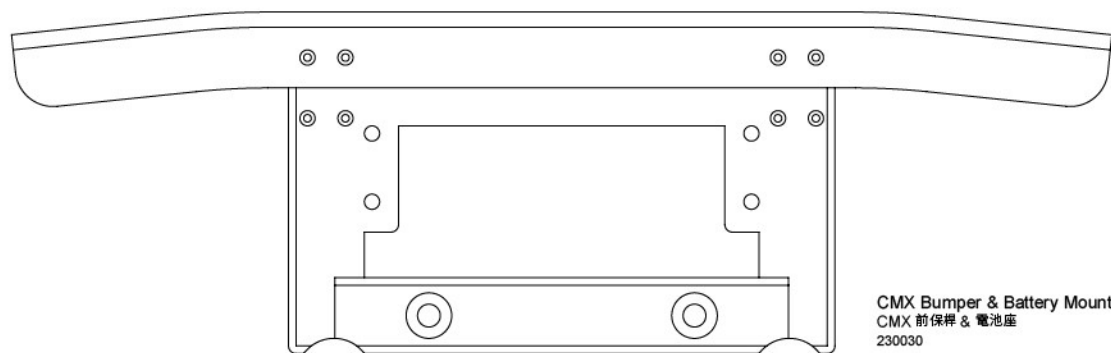


CMX Axle lockout set
CMX 車軸固定套組
230029

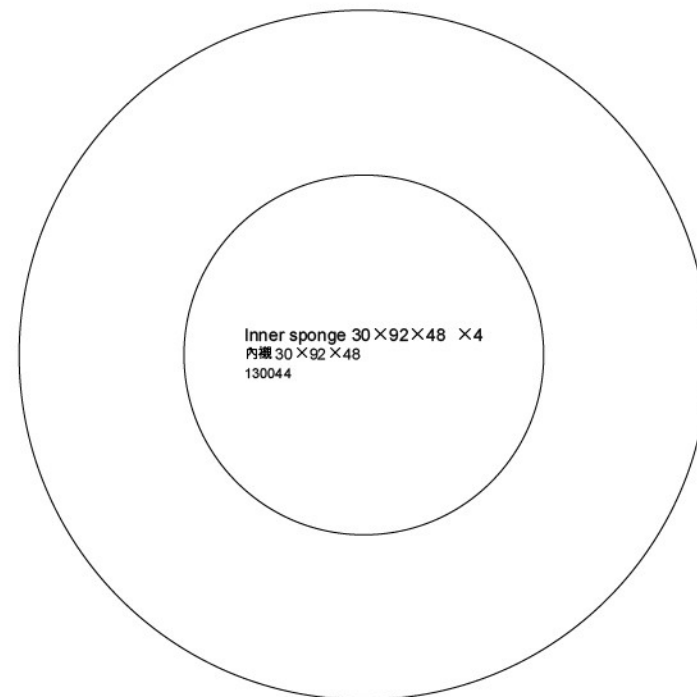
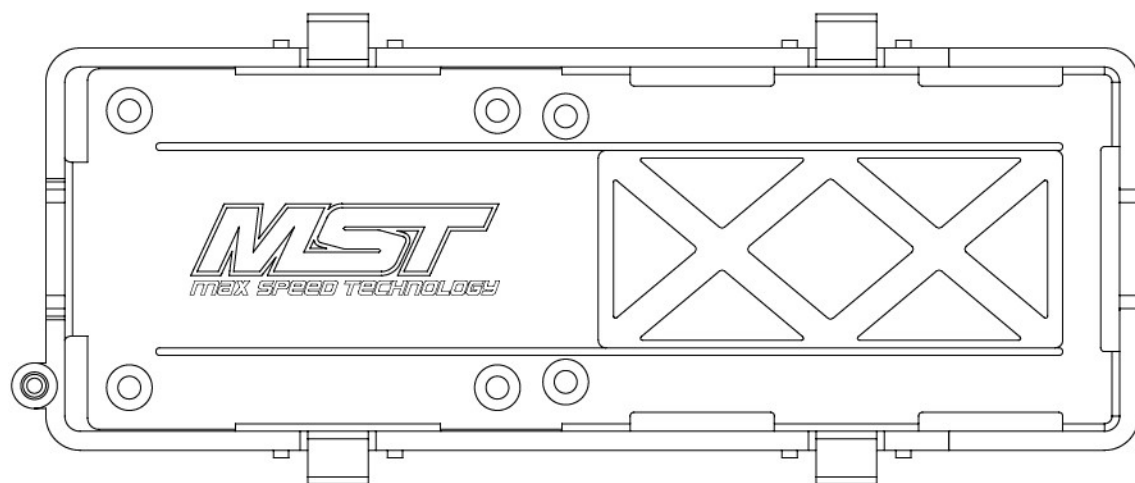


CMX Chassis rail ×2
CMX 大樑
310075

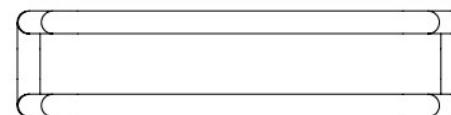
PARTS



CMX Bumper & Battery Mount
CMX 前保桿 & 電池座
230030

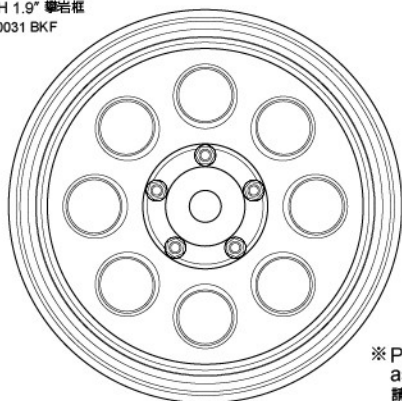


Inner sponge 30×92×48 ×4
內襯 30×92×48
130044

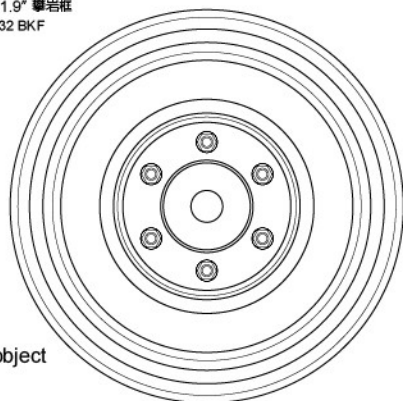


Battery O-ring (S)2
電池 O 環
130003

58H 1.9" Crawler wheel ×4
58H 1.9" 攀岩輪
230031 BKF

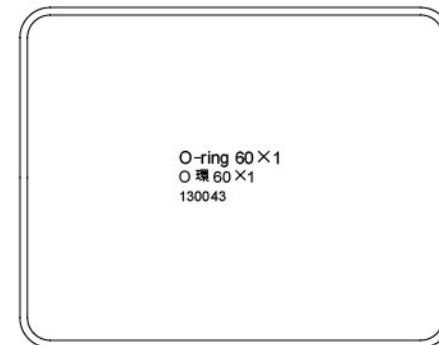
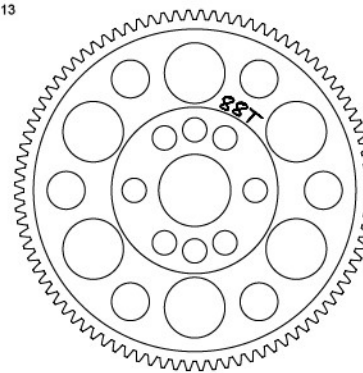


60D 1.9" Crawler wheel ×4
60D 1.9" 攀岩輪
230032 BKF



※ Please make the object
as the standard.
請以實物為主。

Spur gear 48P-88T
大直齒 48P-88T
210013



O-ring 60×1
O 環 60×1
130043

PARTS CODE

| | | | | | | | |
|--------|--------------------------------|--------|--------------------------------|--------|------------------------------------|----------|---------------------------------|
| 101034 | KM Crawler tire 30×90-1.9" (2) | 110052 | Countersunk screw M3×10 (10) | 130042 | O-ring 3×1 (10) | 230027 | CMX Dust cover |
| 110001 | Round head screw M3×6 (10) | 110061 | Round head screw M3×14 (6) | 130043 | O-ring 60×1 (2) | 230028 | CMX Deceleration gear box set |
| 110002 | Round head screw M3×8 (10) | 110073 | Countersunk screw M3×16 (6) | 130044 | Inner sponge 30×92×48 (2) | 230029 | CMX Axle lockout set |
| 110005 | Countersunk screw M3×8 (10) | 110084 | Round head screw M2×10 (6) | 210013 | Spur gear 88T - 48P | 230030 | CMX Bumper & battery mount |
| 110009 | Set screw M3×20 (6) | 110085 | Round head screw M2×16 (6) | 210033 | Servo horn set (long)(23T/25T) | 230031 | 58H 1.9" Crawler wheel (4) |
| 110011 | Cap screw M3×6 (6) | 110086 | Round head screw M3×16 (6) | 210057 | Damper cap set | 230032 | 60D 1.9" Crawler wheel (4) |
| 110013 | E-clip 2.0 (10) | 110087 | Round head screw M3×18 (6) | 210529 | Coil spring 45mm (hard)(silver)(2) | 230033 | CMX Heavy duty locker set |
| 110015 | Flange nut M4 (4) | 110088 | Round head screw M3×20 (6) | 210530 | Coil spring 45mm (medium)(gold)(2) | 230034 | Spur gear holder |
| 110016 | R-clip 6.0 (10) | 110089 | Round head screw M3×30 (6) | 210531 | Coil spring 45mm (soft)(red)(2) | 310066 | Bevel gear shaft |
| 110017 | Shaft 2×9.8 (10) | 110090 | Shaft screw M4×4×12 (6) | 220012 | Mineral oil 10# | 310067 | 5×26.8 Shaft |
| 110018 | Shaft 2×13.8 (5) | 110091 | Cap screw M3×40 (6) | 230014 | CMX deceleration gear set | 310068 | Gear shaft |
| 110021 | Lock nut M3 (5) | 110092 | King pin screw (4) | 230015 | Damper parts | 310069 | Main gear shaft |
| 110023 | Set screw M3×16 (6) | 110104 | G-clip 11.0 (10) | 230016 | CMX Ball connector set | 310070 | CVA Axle (2) |
| 110026 | Round head screw M3×10 (10) | 120021 | Bearing 5×10×4 (4) | 230017 | CMX Link set | 310071 | Solid axle |
| 110031 | Shaft 2×10.8 (10) | 120022 | Bearing 8×12×3.5 (4) | 230018 | CMX Driveshaft | 310072 | Piston rod (4) |
| 110035 | Set screw M3×3 (6) | 120023 | Bearing 10×15×4 (4) | 230019 | CMX Cross member set | 310073 | Bevel gear set 36-15 |
| 110037 | E-clip 4.0 (10) | 130001 | Damper O-ring P3 (red) (10) | 230020 | CMX Gear box chassis set | 310074BK | CMX Motor mount |
| 110041 | Countersunk screw M3×5 (10) | 130008 | Black grease | 230021 | CMX Receiver case set | 310075 | CMX Chassis rail (2) |
| 110044 | Round head screw M2×6 (6) | 130017 | Inner sponge (8) | 230022 | CMX Axle cover | 310108 | Wheel axle (2) |
| 110047 | Spacer 3×6×0.5 (8) | 130023 | O-ring P3 (black) (10) | 230023 | CMX Damper stay set | 700003S | 5.5 & 7.0 Alum. wrench (silver) |
| 110048 | Spacer 3×8×0.5 (8) | 130032 | Damper cap O-ring (10) | 230024 | CMX C hub carrier set | 820020 | Spacer 5×7×0.3 (8) |
| 110049 | Round head screw M3×5 (10) | 130034 | Sponge 20×80×1 (4) | 230025 | CMX Knuckle set | | |
| 110050 | Round head screw M2×5 (6) | 130035 | L Wrench set (1.5 & 2.0 & 2.5) | 230026 | CMX Car body post set | | |

部品編號

| | | | | | | | |
|--------|-----------------------|--------|-------------------------|--------|---------------------|----------|-----------------------|
| 101034 | KM 攀岩胎 30×90-1.9" (2) | 110052 | 六角沉頭螺絲 M3×10 (10) | 130042 | O環 3×1 (10) | 230027 | CMX 防塵殼組 |
| 110001 | 六角半圓頭螺絲 M3×6 (10) | 110061 | 六角半圓頭螺絲 M3×14 (6) | 130043 | O環 60×1 (2) | 230028 | CMX 減速箱組 |
| 110002 | 六角半圓頭螺絲 M3×8 (10) | 110073 | 六角沉頭螺絲 M3×16 (6) | 130044 | 內襯 30×92×48 (2) | 230029 | CMX 車軸固定套組 |
| 110005 | 六角沉頭螺絲 M3×8 (10) | 110084 | 六角半圓頭螺絲 M2×10 (6) | 210013 | 大齒盤 88T - 48P | 230030 | CMX 前保桿 & 電池座 |
| 110009 | 六角止付螺絲 M3×20 (6) | 110085 | 六角半圓頭螺絲 M2×16 (6) | 210033 | 伺服機舵片組-長 (23T/25T) | 230031 | 58H 1.9" 攀岩框 (4) |
| 110011 | 六角有頭螺絲 M3×6 (半牙) (6) | 110086 | 六角半圓頭螺絲 M3×16 (6) | 210057 | 避震器上下蓋組 | 230032 | 60D 1.9" 攀岩框 (4) |
| 110013 | E扣 2.0 (10) | 110087 | 六角半圓頭螺絲 M3×18 (6) | 210529 | 避震彈簧 45mm (硬)(銀)(2) | 230033 | CMX 直軸連接座組 |
| 110015 | 凸緣螺帽 M4 (4) | 110088 | 六角半圓頭螺絲 M3×20 (6) | 210530 | 避震彈簧 45mm (中)(金)(2) | 230034 | 齒盤座 |
| 110016 | R銷 6.0 (10) | 110089 | 六角半圓頭螺絲 M3×30 (6) | 210531 | 避震彈簧 45mm (軟)(紅)(2) | 310066 | 傘齒軸 |
| 110017 | 插銷 2×9.8 (10) | 110090 | 銷釘螺絲 M4×4×12 (6) | 220012 | 礦物油 10# | 310067 | 5×26.8 齒軸 |
| 110018 | 插銷 2×13.8 (5) | 110091 | 六角有頭螺絲 M3×40 (半牙) (6) | 230014 | CMX 減速齒組 | 310068 | 輸出軸 |
| 110021 | 防鬆螺帽 M3 (5) | 110092 | 大王螺絲 (4) | 230015 | 避震膠件組 | 310069 | 主齒軸 |
| 110023 | 六角止付螺絲 M3×16 (6) | 110104 | G扣 11.0 (10) | 230016 | CMX 球頭組 | 310070 | CVA 輪軸 (2) |
| 110026 | 六角半圓頭螺絲 M3×10 (10) | 120021 | 軸承 5×10×4 (4) | 230017 | CMX 拉桿組 | 310071 | 直軸輪軸 |
| 110031 | 插銷 2×10.8 (10) | 120022 | 軸承 8×12×3.5 (4) | 230018 | CMX 傳動軸 | 310072 | 避震軸心 (4) |
| 110035 | 六角止付螺絲 M3×3 (6) | 120023 | 軸承 10×15×4 (4) | 230019 | CMX 橫樑組 | 310073 | 傘齒組 36-15 |
| 110037 | E扣 4.0 (10) | 130001 | 阻尼器O環 P3 (紅) (10) | 230020 | CMX 減速箱底盤組 | 310074BK | CMX 馬達座 (黑) |
| 110041 | 六角沉頭螺絲 M3×5 (10) | 130008 | 黑色油膏 | 230021 | CMX 接收機盒組 | 310075 | CMX 大樑 (2) |
| 110044 | 六角半圓頭螺絲 M2×6 (6) | 130017 | 吸震泡棉 (8) | 230022 | CMX 車軸殼 | 310108 | 萬向接杯 (2) |
| 110047 | 墊片 3×6×0.5 (8) | 130023 | O環 P3 (黑) (10) | 230023 | CMX 避震架組 | 700003S | 5.5 & 7.0 鋁合金套筒工具 (銀) |
| 110048 | 墊片 3×8×0.5 (8) | 130032 | 避震上蓋O環 (10) | 230024 | CMX 轉向C座組 | 820020 | 墊片 5×7×0.3 (8) |
| 110049 | 六角半圓頭螺絲 M3×5 (10) | 130034 | 吸震泡棉 20×80×1 (4) | 230025 | CMX 轉向座組 | | |
| 110050 | 六角半圓頭螺絲 M2×5 (6) | 130035 | L 板手組 (1.5 & 2.0 & 2.5) | 230026 | CMX 車殼支柱組 | | |

026114-1