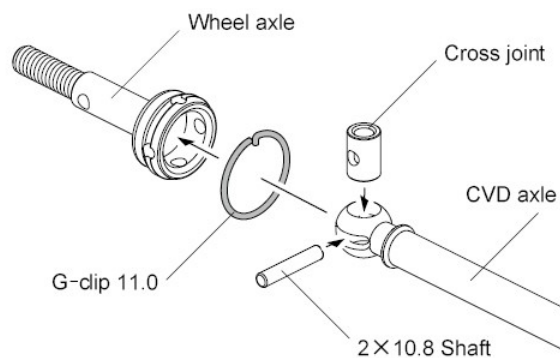
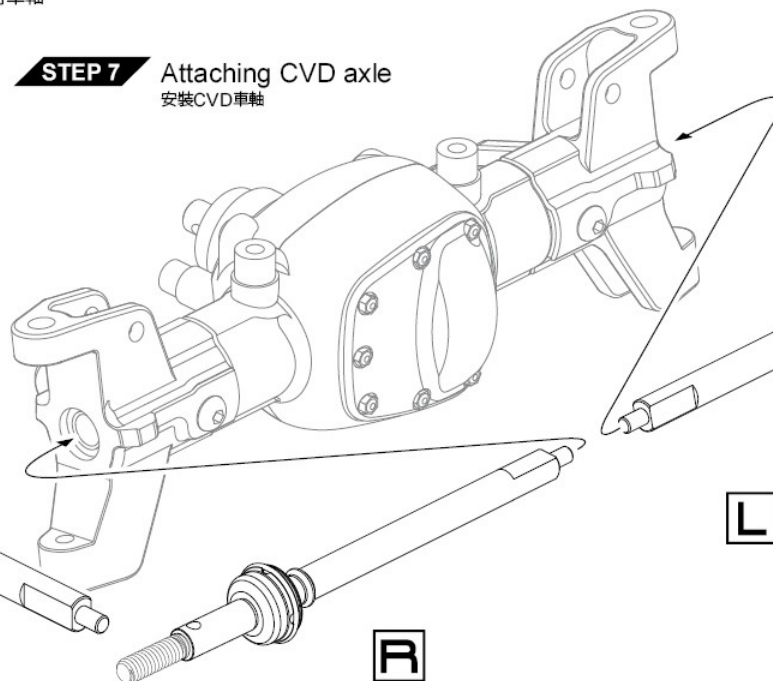
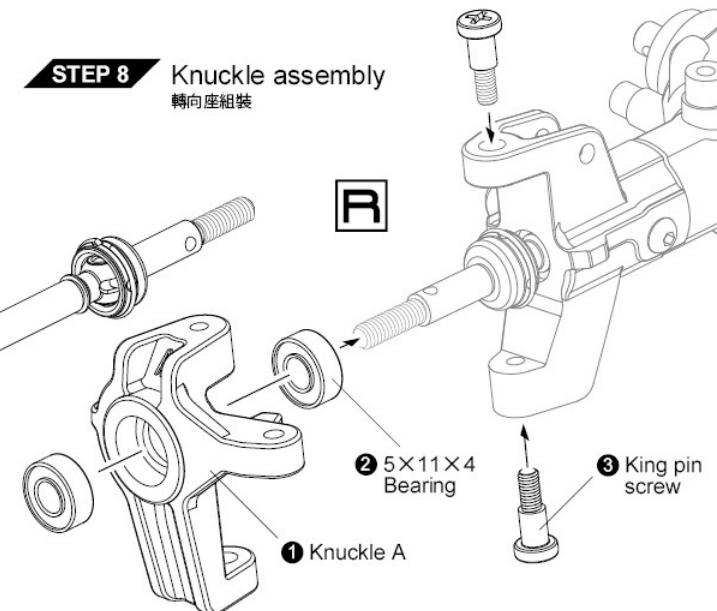


STEP 6 Wheel axle assembly
萬向接杯組裝

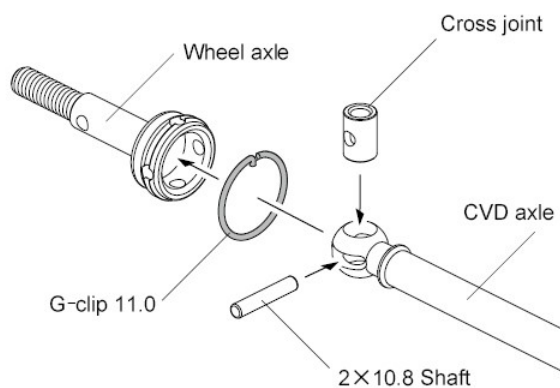
R



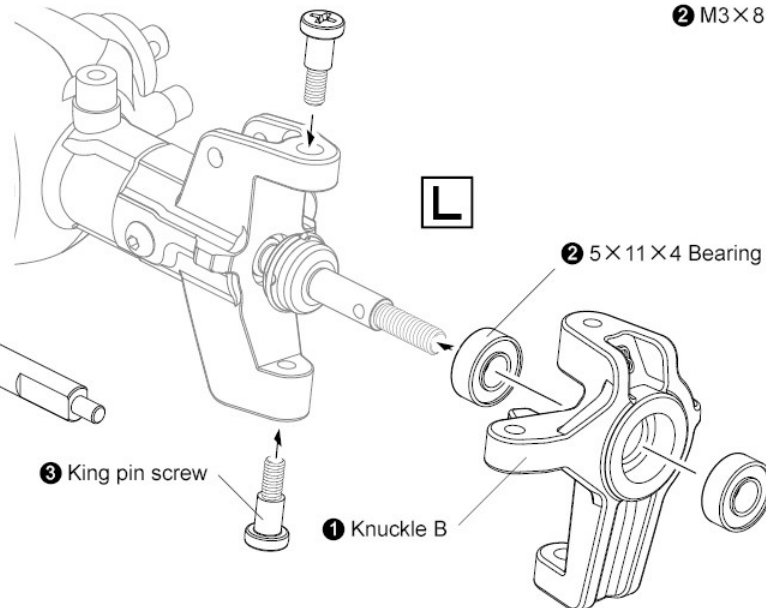
※ Note the G-clip mounting direction.
注意G扣安裝方向

STEP 7 Attaching CVD axle
安裝CVD車軸

STEP 8 Knuckle assembly
轉向座組裝

STEP 9 Knuckle assembly
轉向座組裝

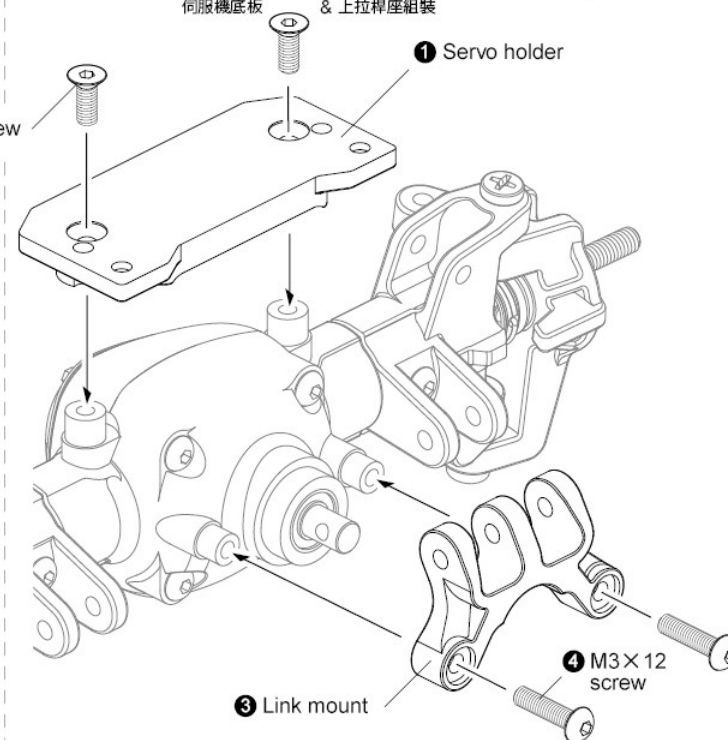
L



※ Note the G-clip mounting direction.
注意G扣安裝方向


STEP 10 Servo plate & Link mount assembly
伺服機底板 & 上拉桿座組裝

2 M3x8 screw

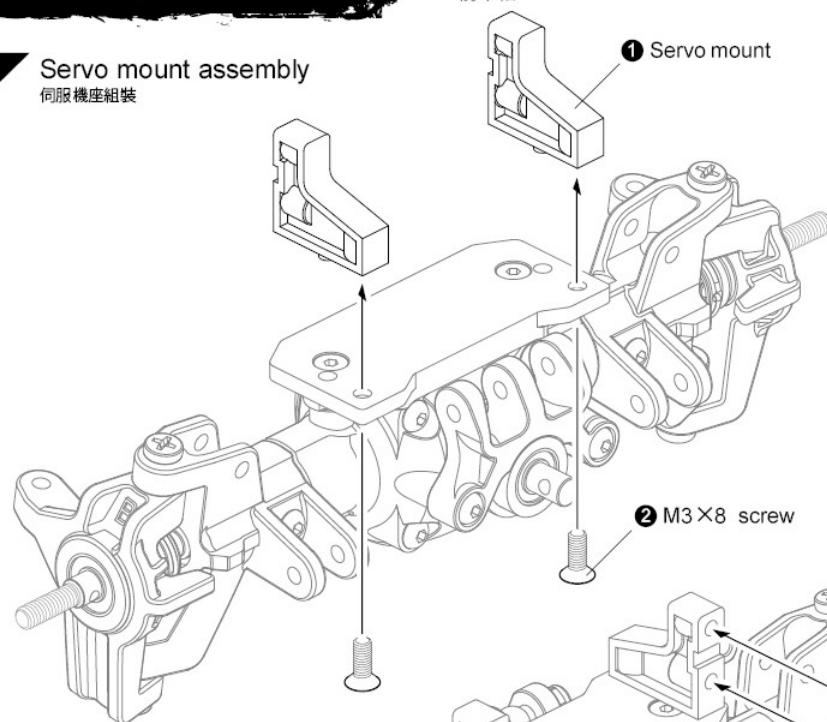


FRONT AXLE

前車軸

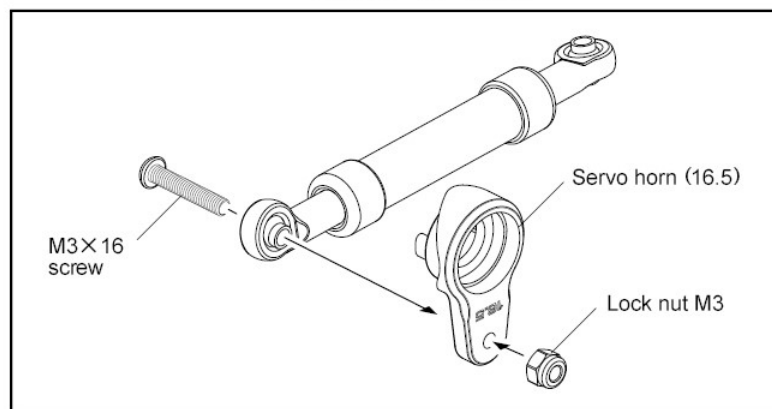
STEP 11 Servo mount assembly

伺服機座組裝



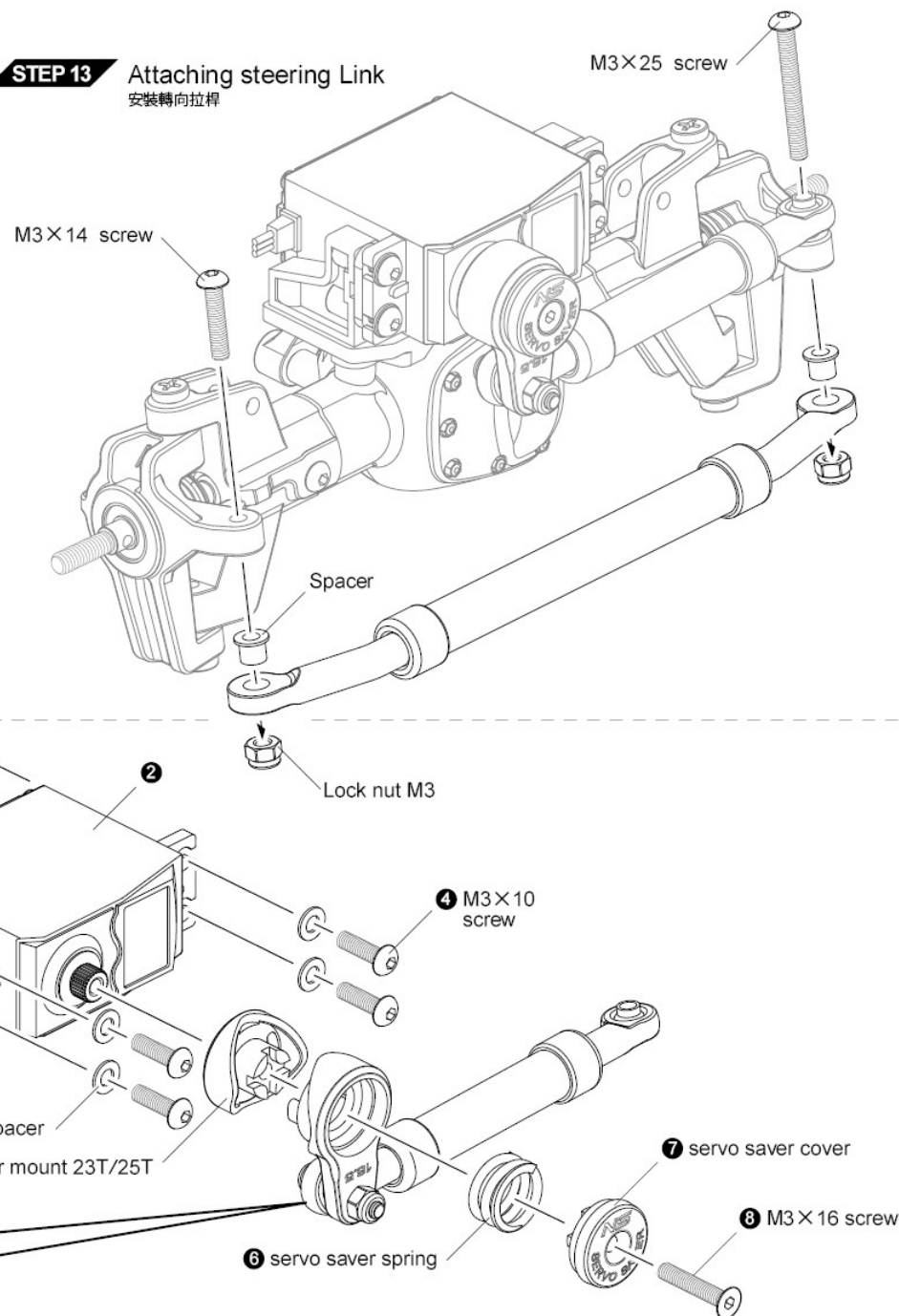
STEP 12 Steering servo assembly

轉向伺服機組裝



STEP 13 Attaching steering Link

安裝轉向拉桿





M3×3 screw ×2
止付螺絲



M2×6 screw ×1
圓頭螺絲



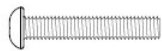
M2×16 screw ×3
圓頭螺絲



M3×6 screw ×4
圓頭螺絲



M3×12 screw ×2
圓頭螺絲



M3×18 screw ×4
圓頭螺絲



M3×25 screw ×2
圓頭螺絲



M3×30 screw ×3
圓頭螺絲



2×9.8 Shaft ×2
插銷



5×10×4 Bearing ×5
培林



8×12×3.5 Bearing ×1
培林



10×15×4 Bearing ×2
培林



Lock nut M3 ×5
防鬆螺帽



Lock nut M4 ×2
防鬆螺帽



E-clip 4.0 ×4
E扣



Bevel gear 10T ×3
大傘齒



Star shaft ×1
小傘齒固定軸



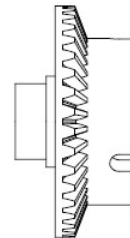
Bevel gear 15T ×2
大傘齒



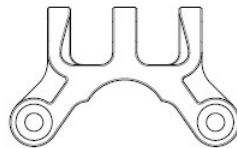
Bevel gear shaft ×1
傘齒軸



Bevel gear 15T ×1
小傘齒



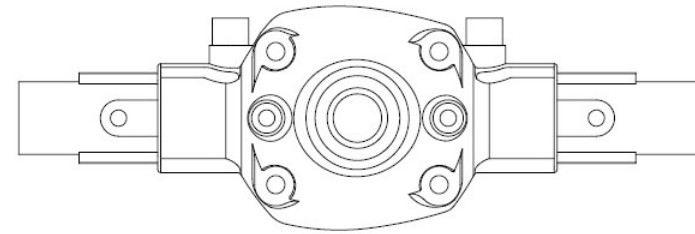
Bevel gear 36T ×1
大傘齒



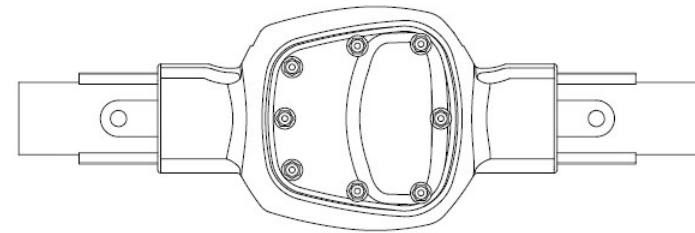
Link mount ×1
上拉桿座



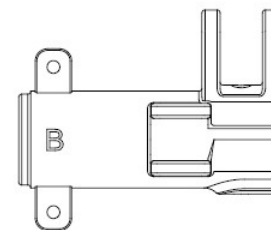
Bevel gear case ×1
大傘齒殼



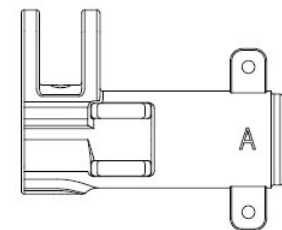
Axle cover A ×1
車軸殼 A



Axle cover B ×1
車軸殼 B



Axle lockout B ×1
車軸固定套 B

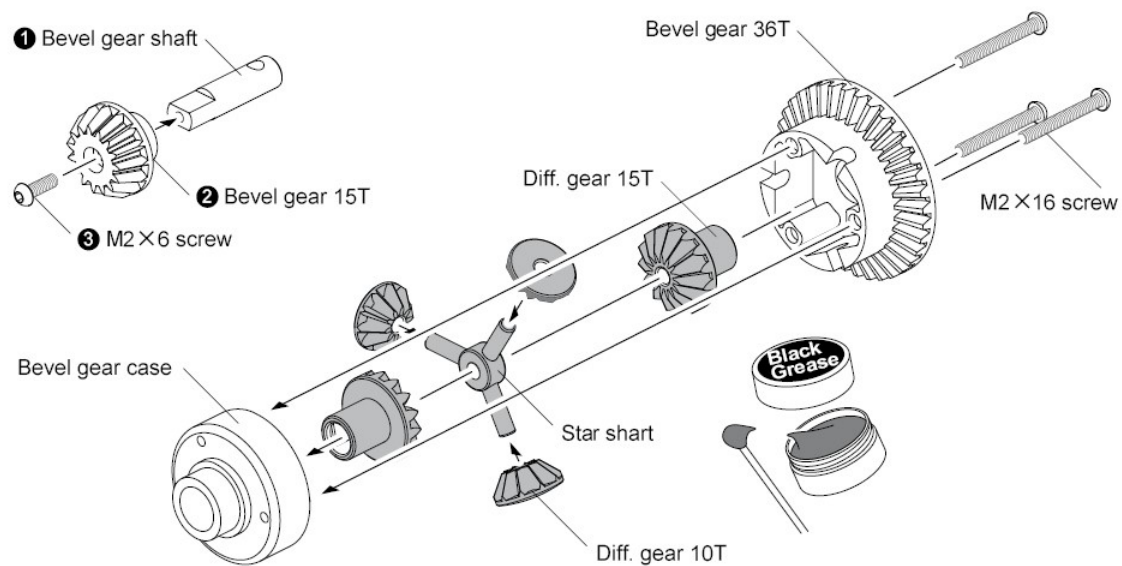


Axle lockout A ×1
車軸固定套 A

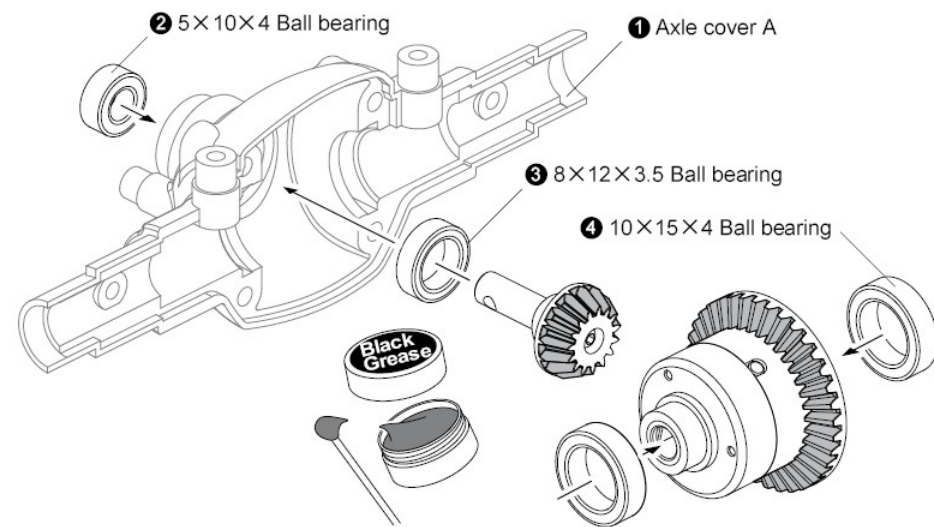


Axle ×2
軸軸

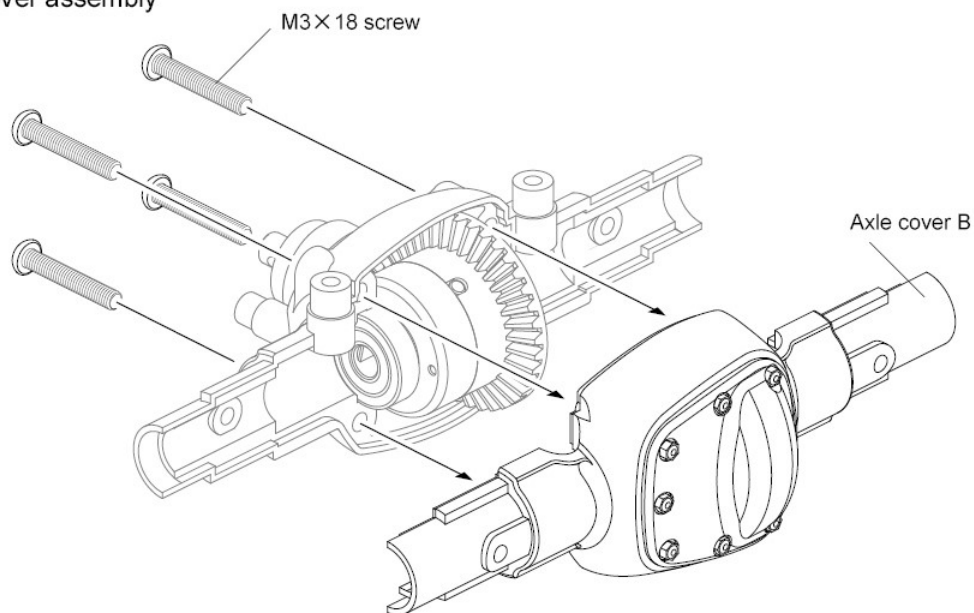
STEP 1 Bevel gear assembly
大傘齒組裝



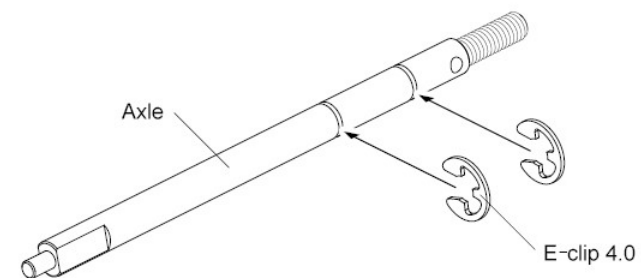
STEP 2 Attaching bevel gear
安裝傘齒



STEP 3 Axle cover assembly
車軸殼組裝



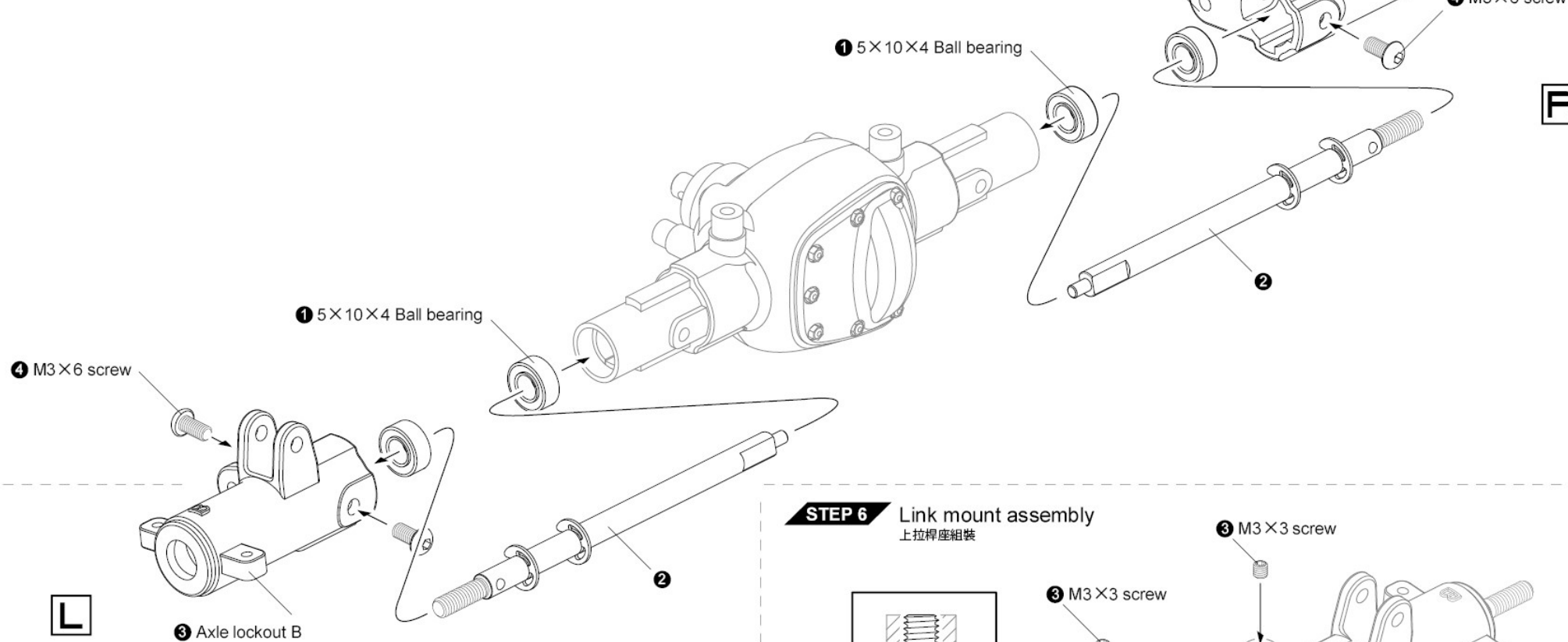
STEP 4 Axle lockout assembly
車軸固定套組裝



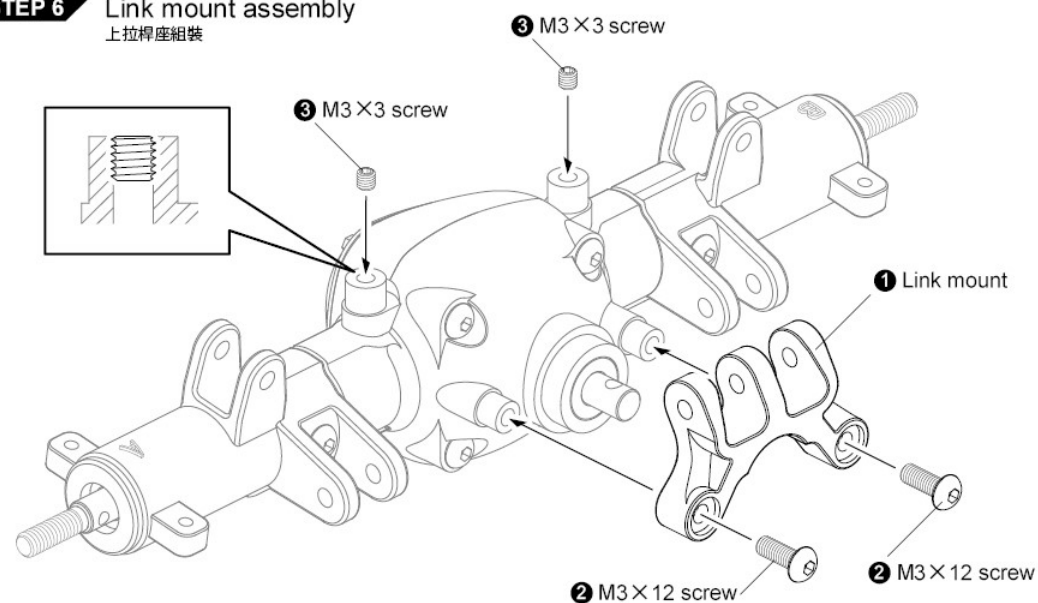
X2
Make 2

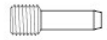
STEP 5 Axle lockout assembly

車軸固定套組裝

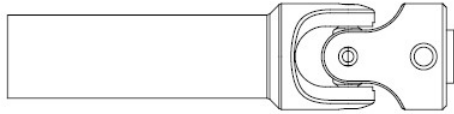
**STEP 6** Link mount assembly

上拉桿座組裝

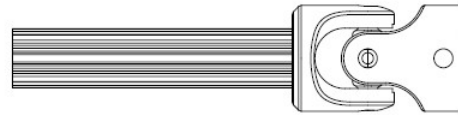




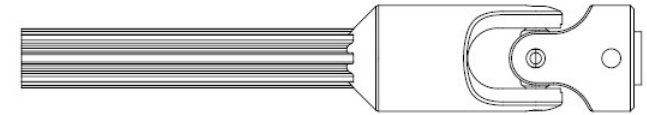
Shaft screw ×4
銷釘螺絲



Driveshaft ×2
傳動軸



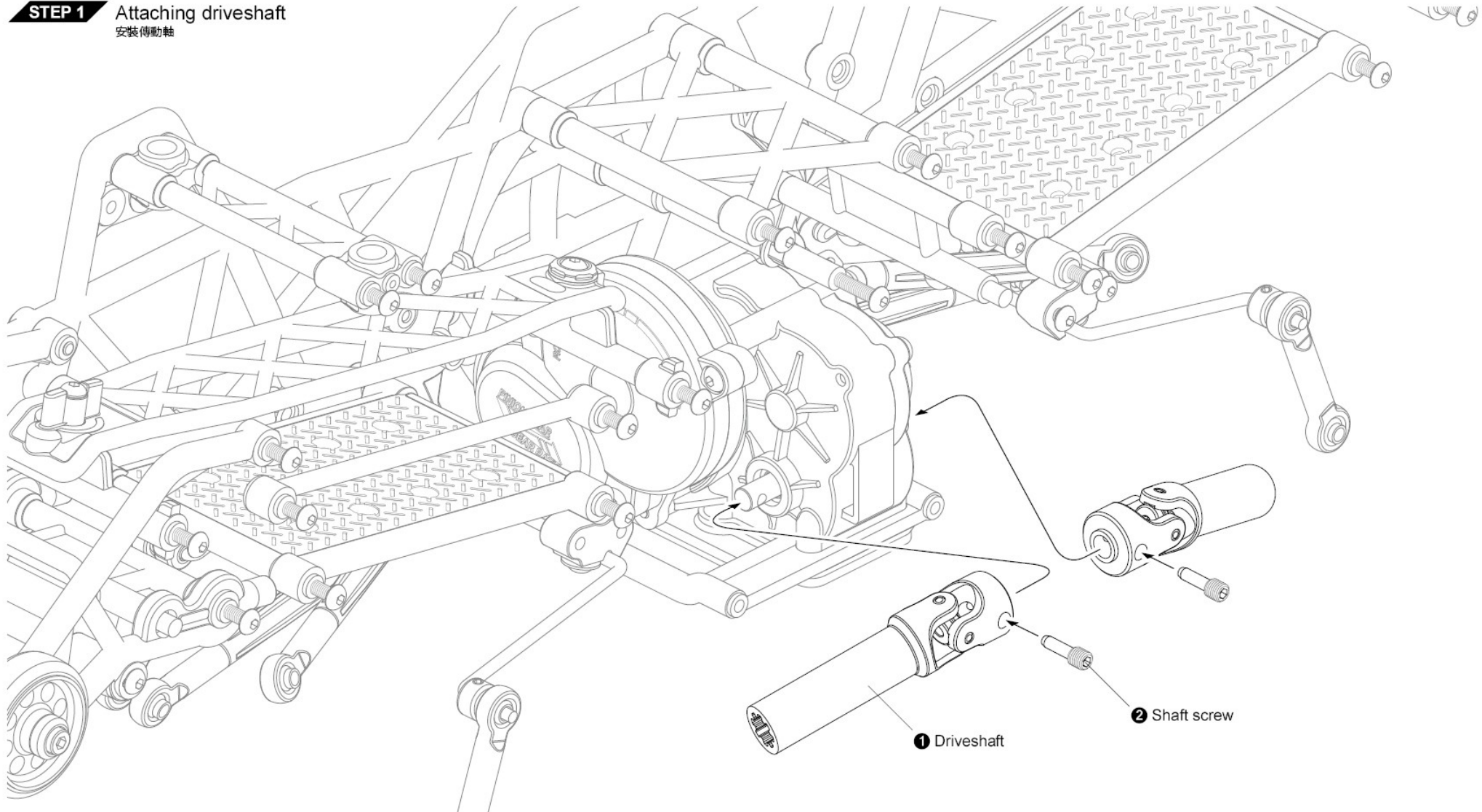
Driveshaft (short) ×1
傳動軸

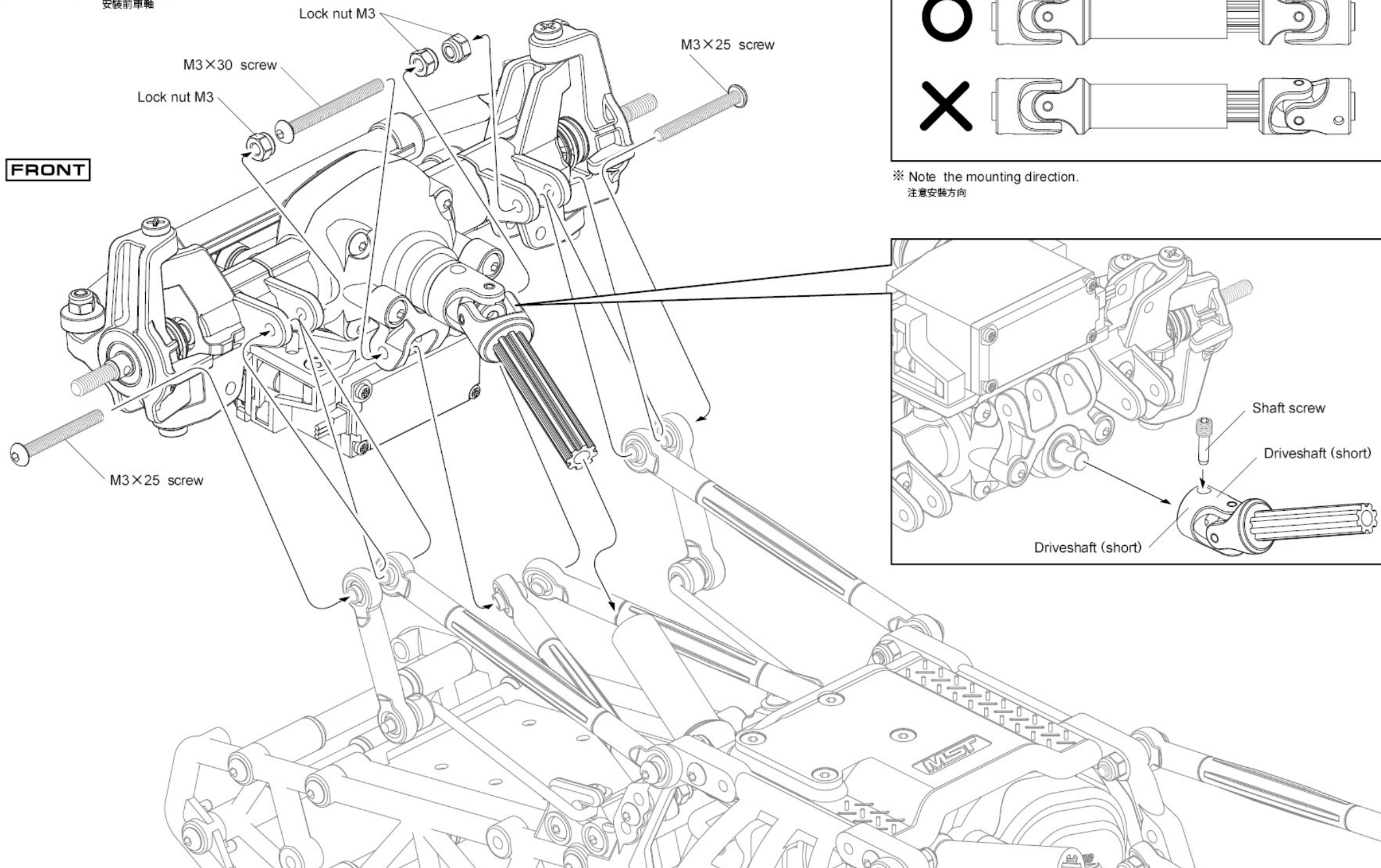


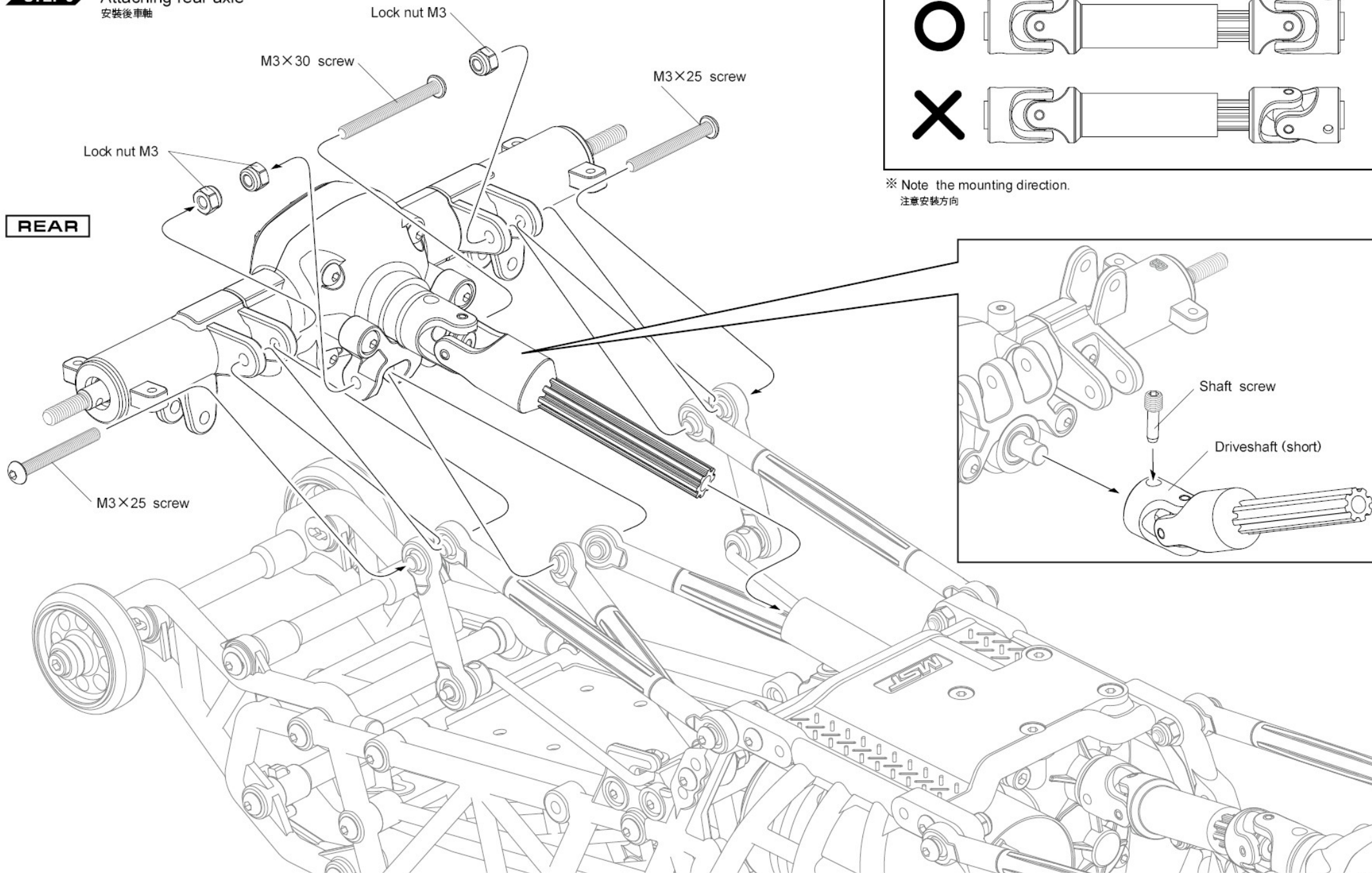
Driveshaft (long) ×1
傳動軸

STEP 1

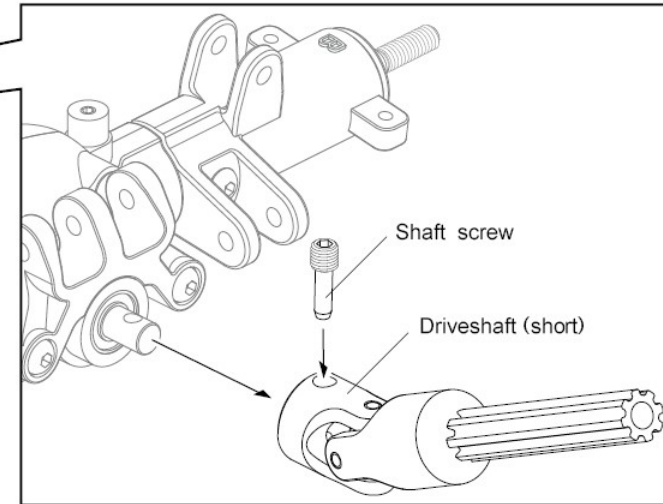
Attaching driveshaft
安裝傳動軸



STEP 2 Attaching front axle
 安裝前車軸


STEP 3 Attaching rear axle
 安裝後車軸


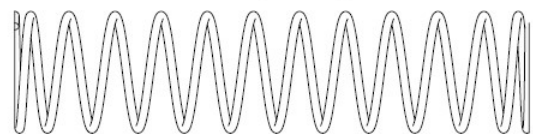
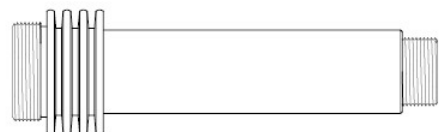
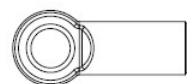
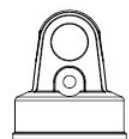
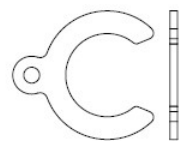
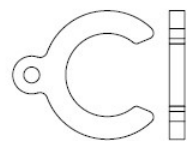
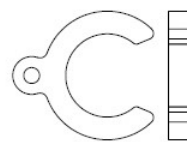
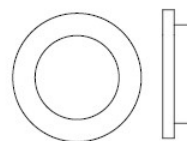
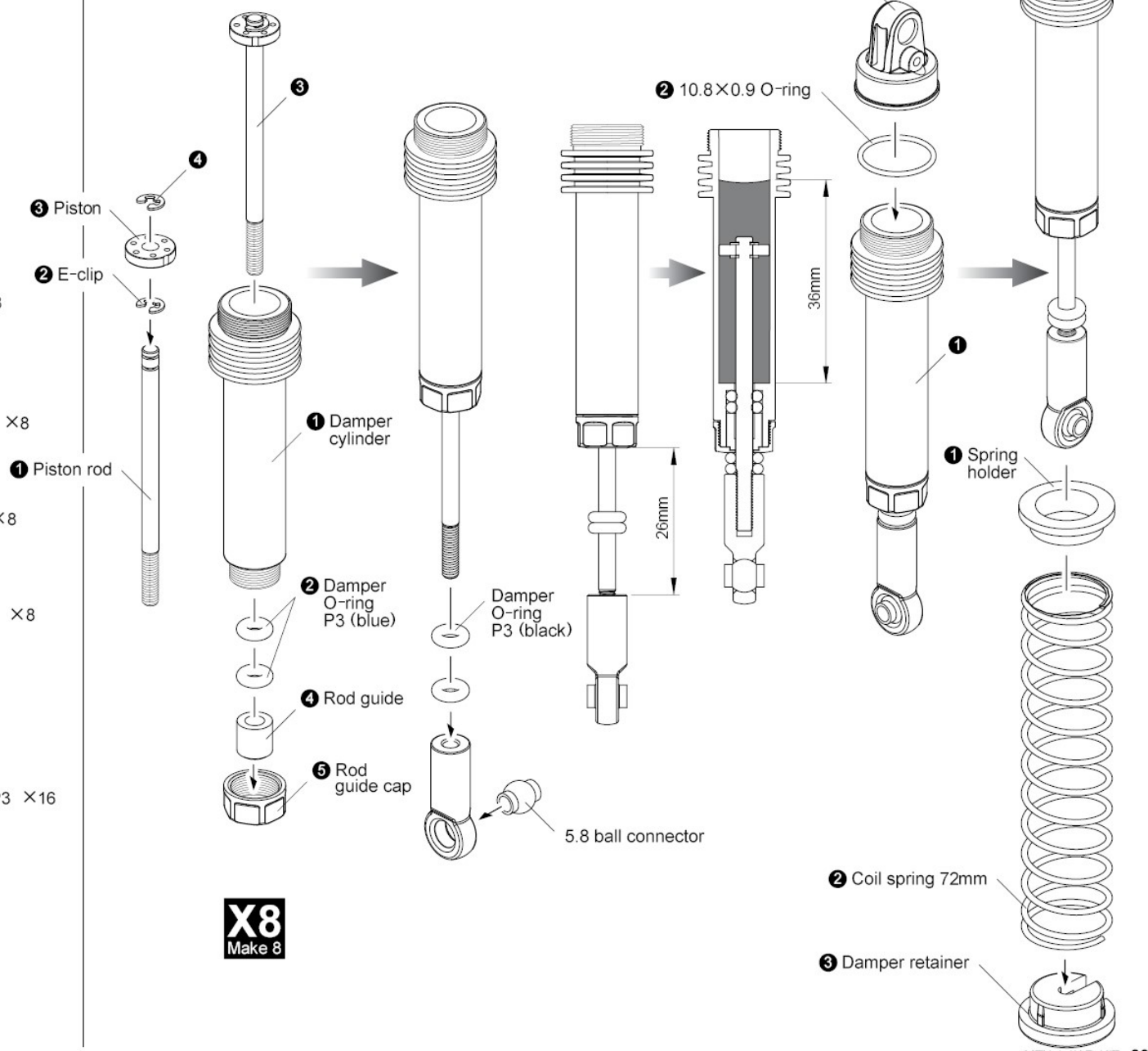
※ Note the mounting direction.
 注意安裝方向

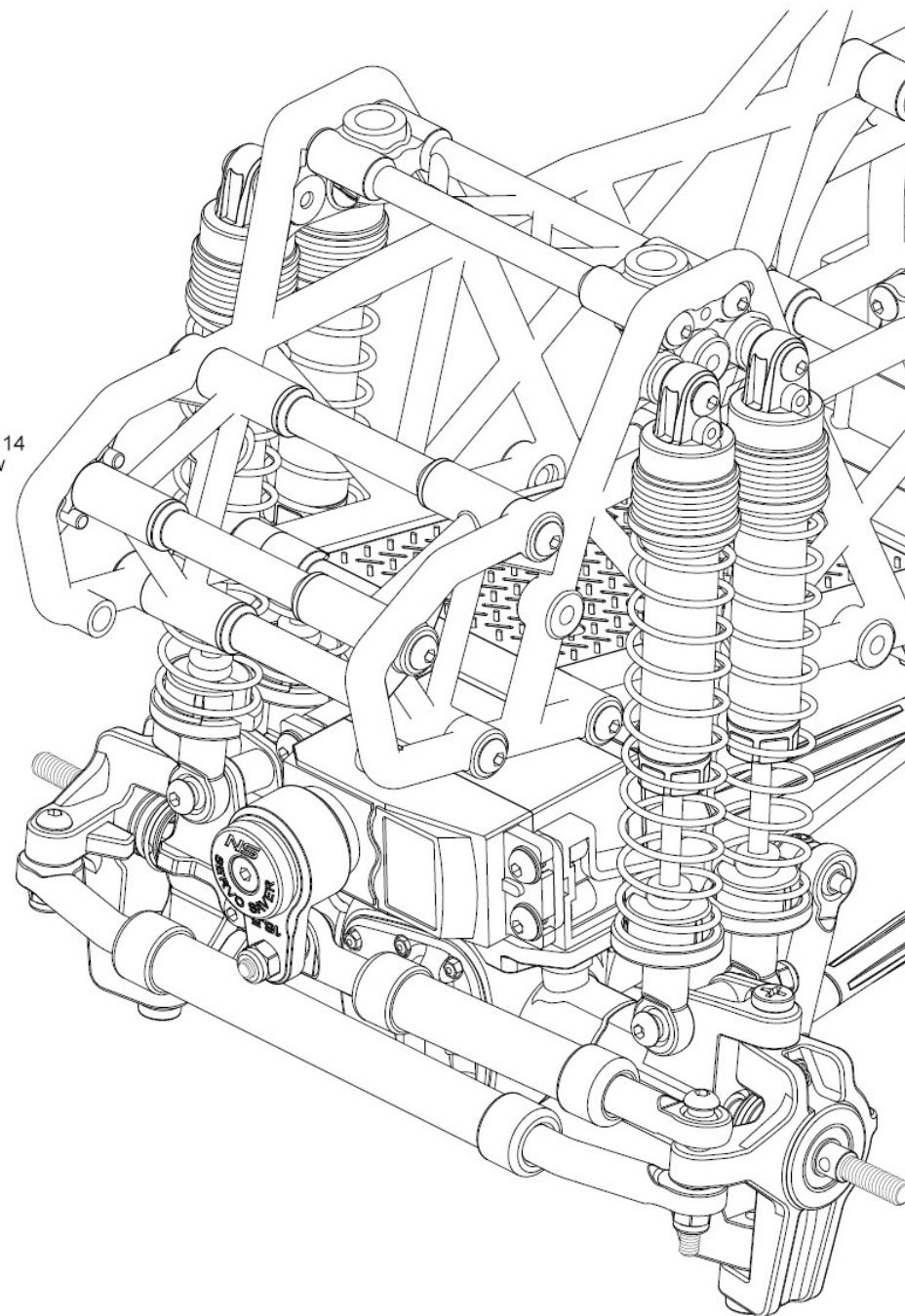
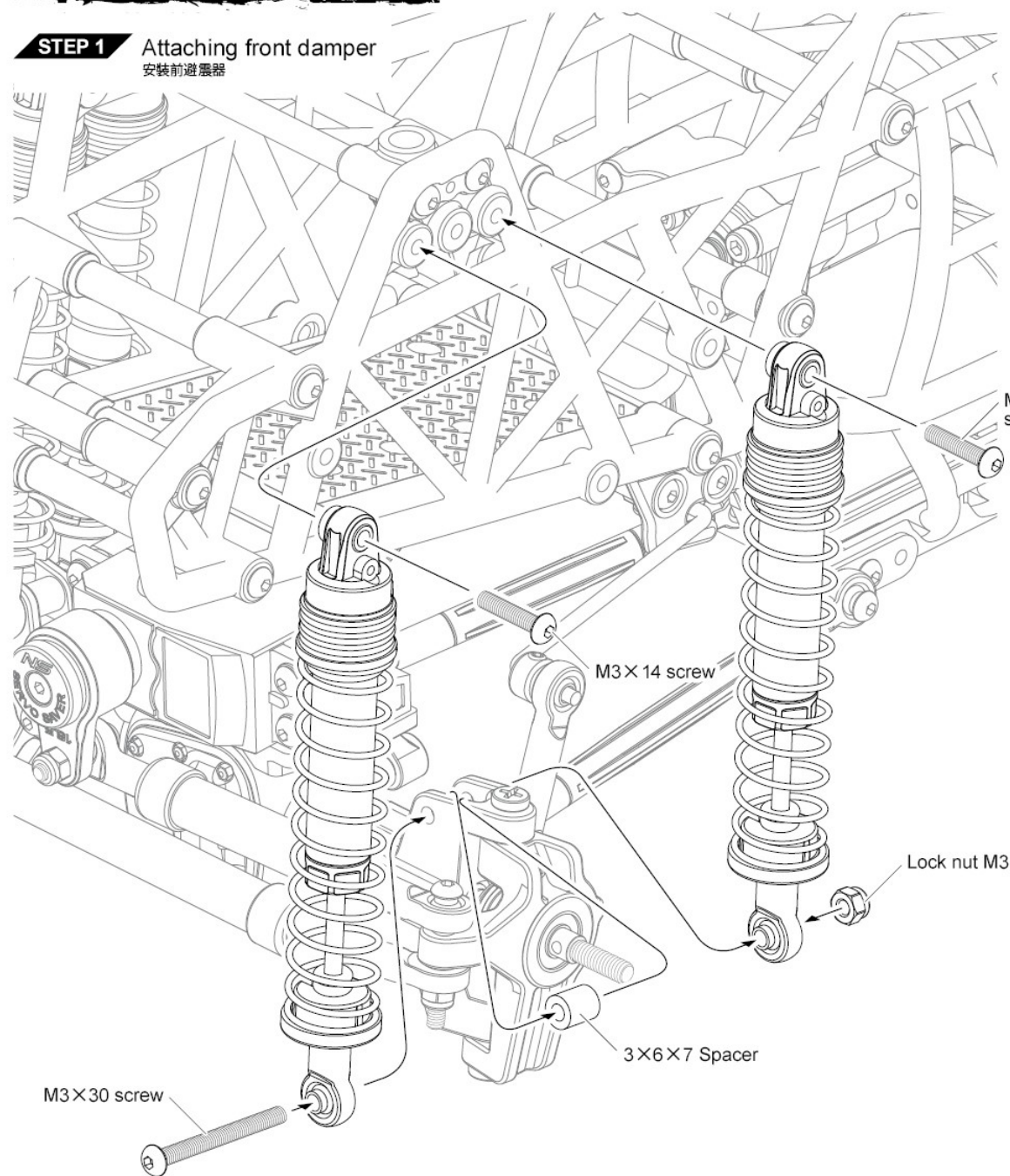


DAMPER

避震器

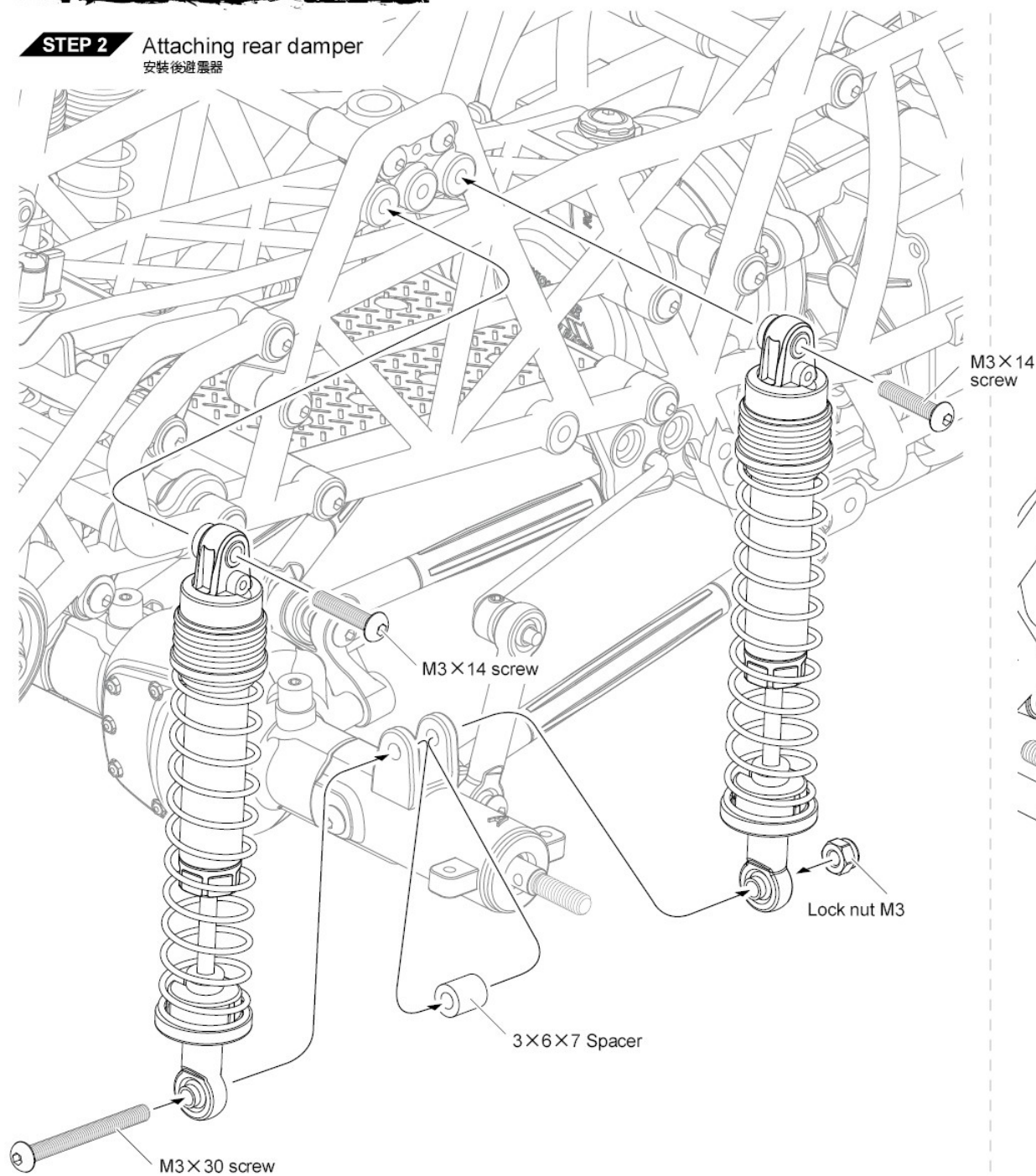
4.8 Ball connector

Coil spring 72mm × 8
避震彈簧 72mmDamper cylinder × 8
避震筒身Piston rod × 8
避震軸心Damper adjuster × 8
避震器拉桿M3×14 screw × 8
圓頭螺絲Cylinder cap × 8
避震器上蓋Damper retainer × 8
彈簧座Spring spacer × 8
彈簧調整扣 1mmRod guide cap × 8
避震器下蓋Spring spacer × 8
彈簧調整扣 2mm10.8×0.9 O-ring × 8
O環Spring spacer × 8
彈簧調整扣 4mmPiston × 8
活塞Damper O-ring P3 × 16
(blue, black)
避震器O環Spring holder × 8
彈簧托環Rod guide × 8
下蓋墊片E-clip × 18
E扣STEP 1 Damper assembly
避震器組裝X8
Make 8

STEP 1 Attaching front damper
安裝前避震器

STEP 2 Attaching rear damper

安裝後避震器

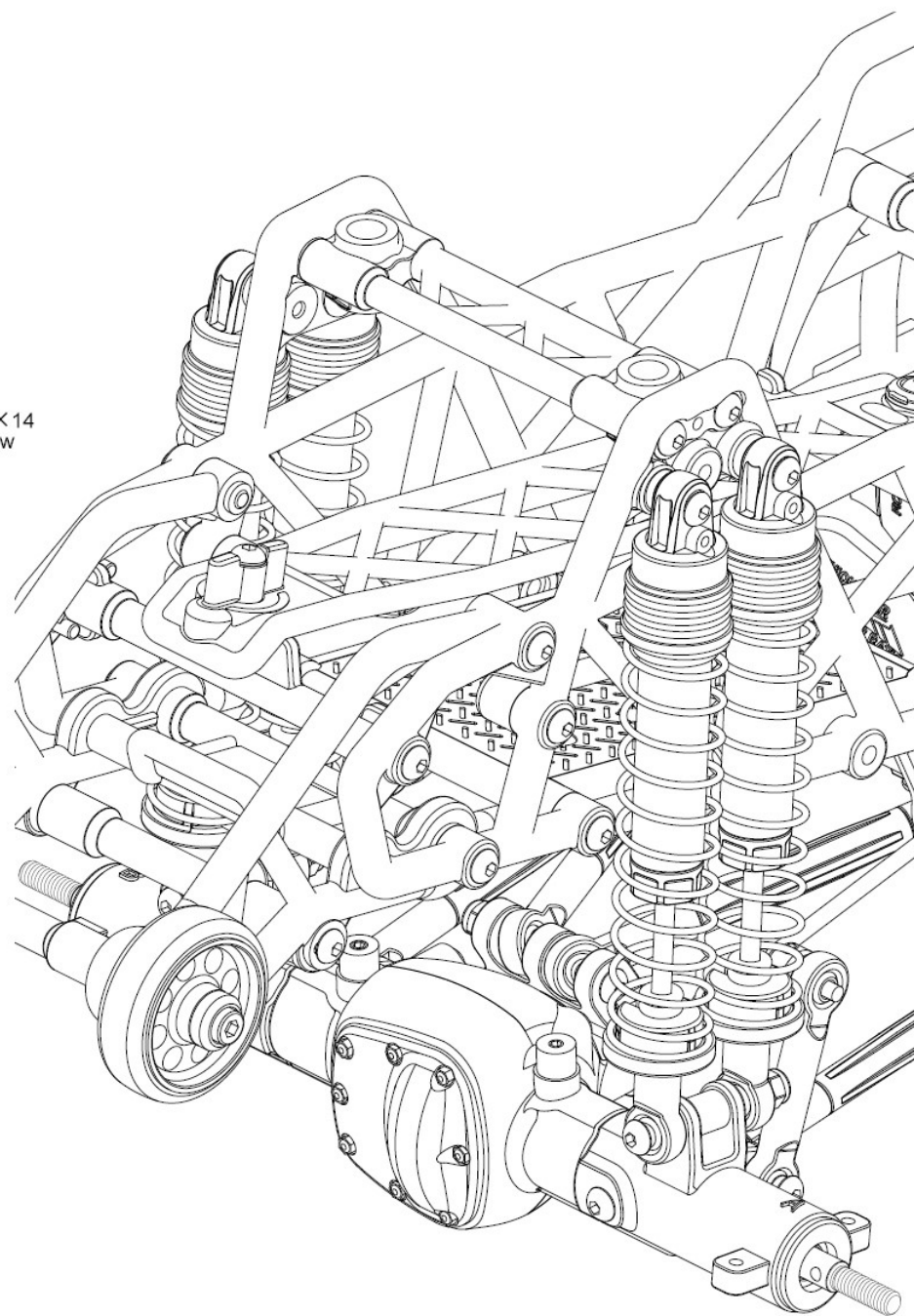
M3 × 14
screw

M3 × 14 screw

Lock nut M3

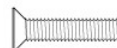
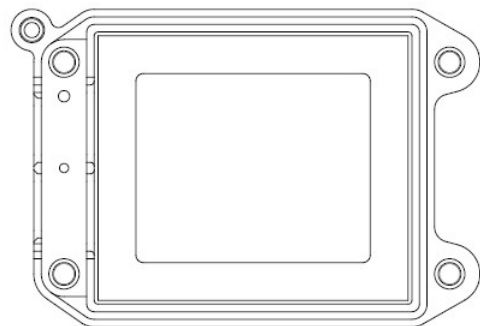
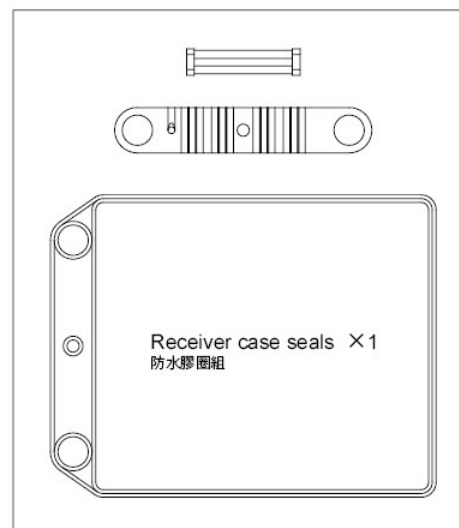
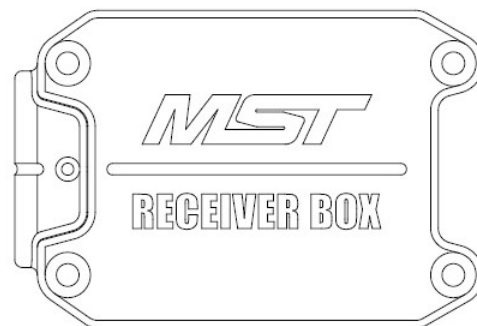
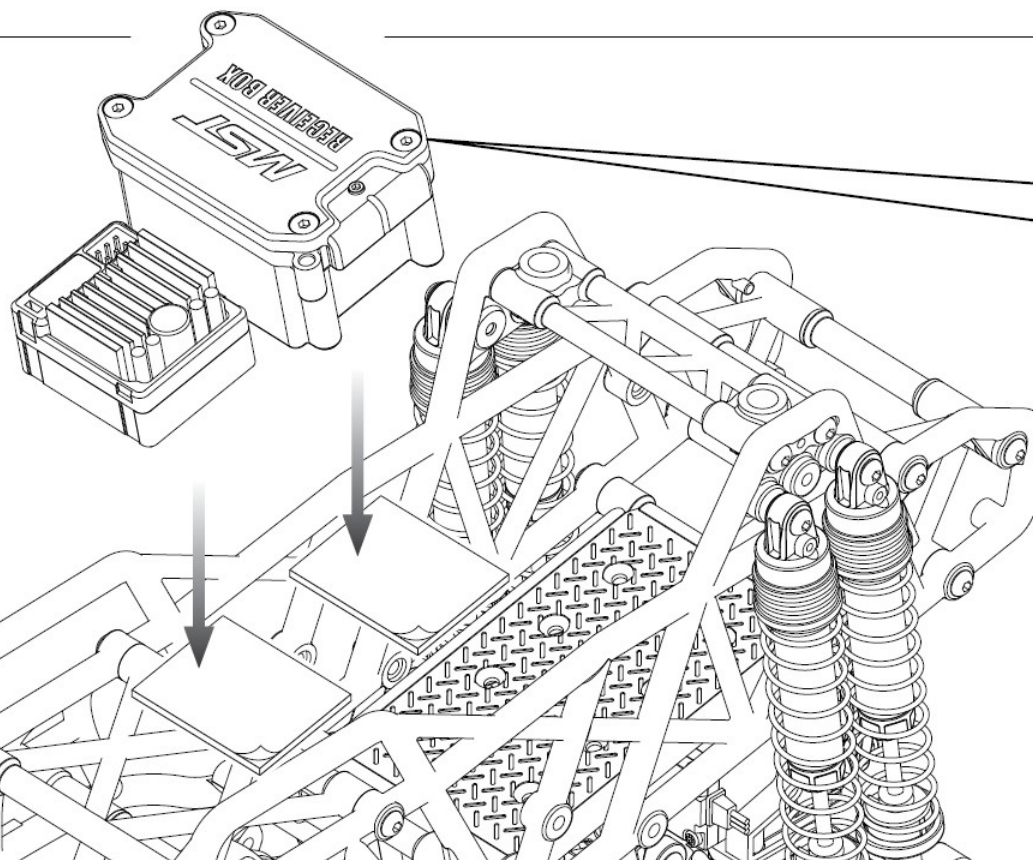
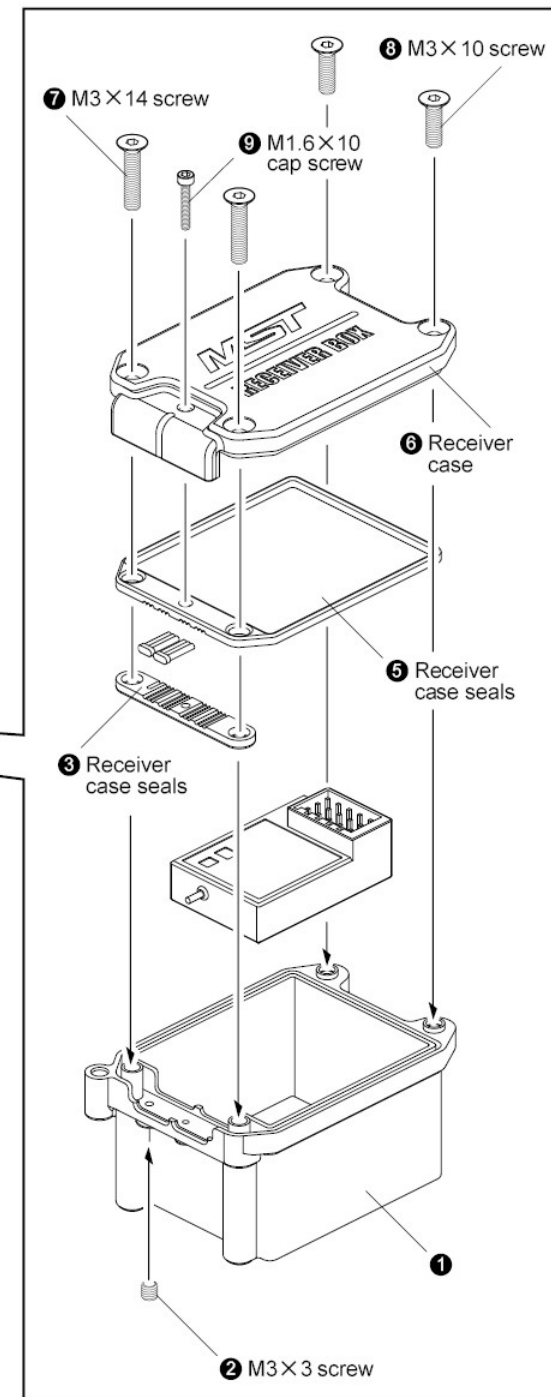
3 × 6 × 7 Spacer

M3 × 30 screw



BATTERY MOUNT

電池座, 接收機盒

M3×3 screw ×1
止付螺絲M1.6×10 cap screw ×1
有頭螺絲M3×10 screw ×2
沉頭螺絲M3×14 screw ×2
沉頭螺絲Receiver case set ×1
接收機盒組Receiver case seals ×1
防水膠圈組**STEP 1** Attaching receiver box
接收機盒組裝※ Cut into two pieces.
對剪為兩片。

WHEELS

輪胎

2×9.8 Shaft ×4
插銷

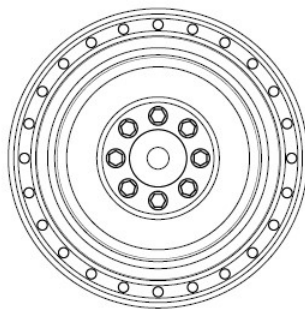


M4 flange nut ×4
凸緣螺帽

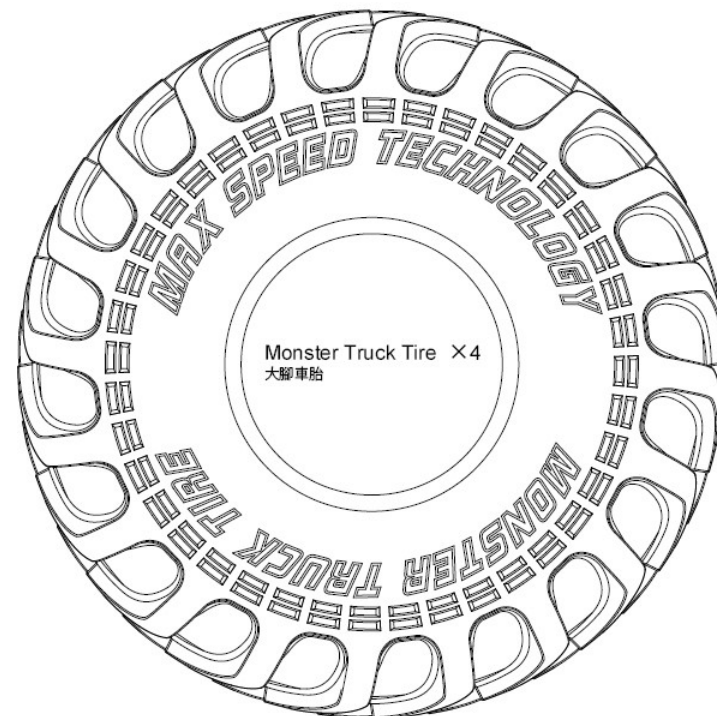


Hex. wheel hubs ×4
六角輪座

※ Please make the object as the standard.
請以實物為主。



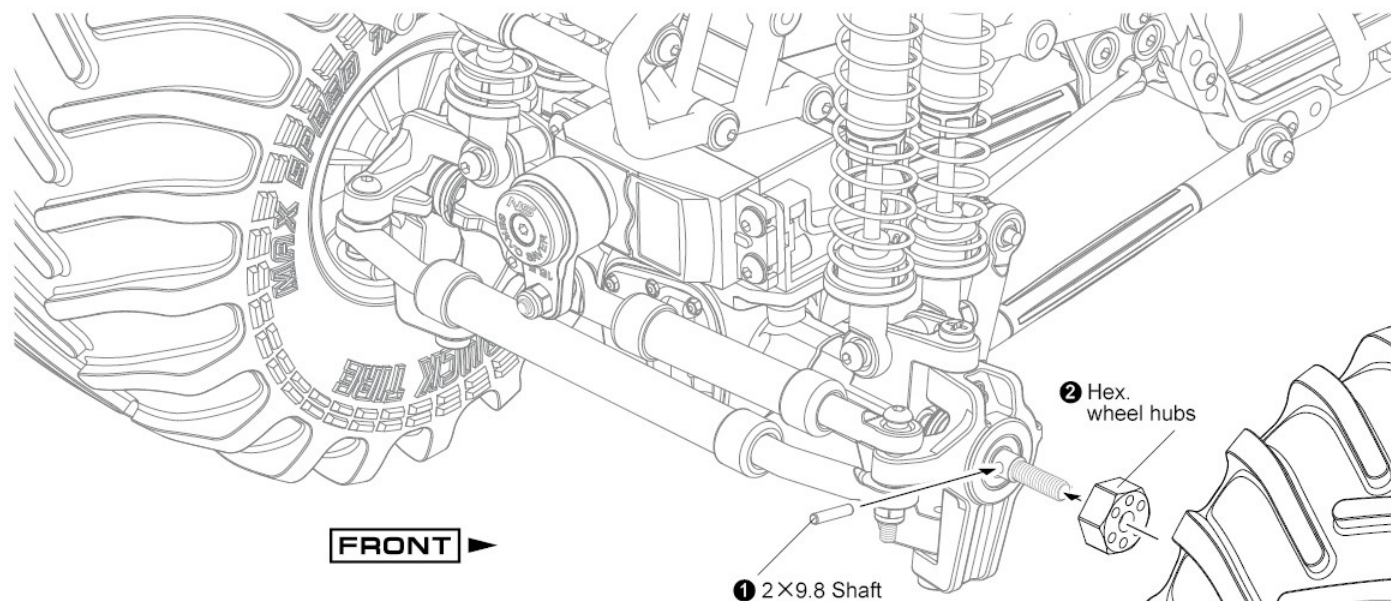
Wheel ×4
輪框



Monster Truck Tire ×4
大腳車胎

STEP 1 Attaching front wheels

安裝前輪



FRONT

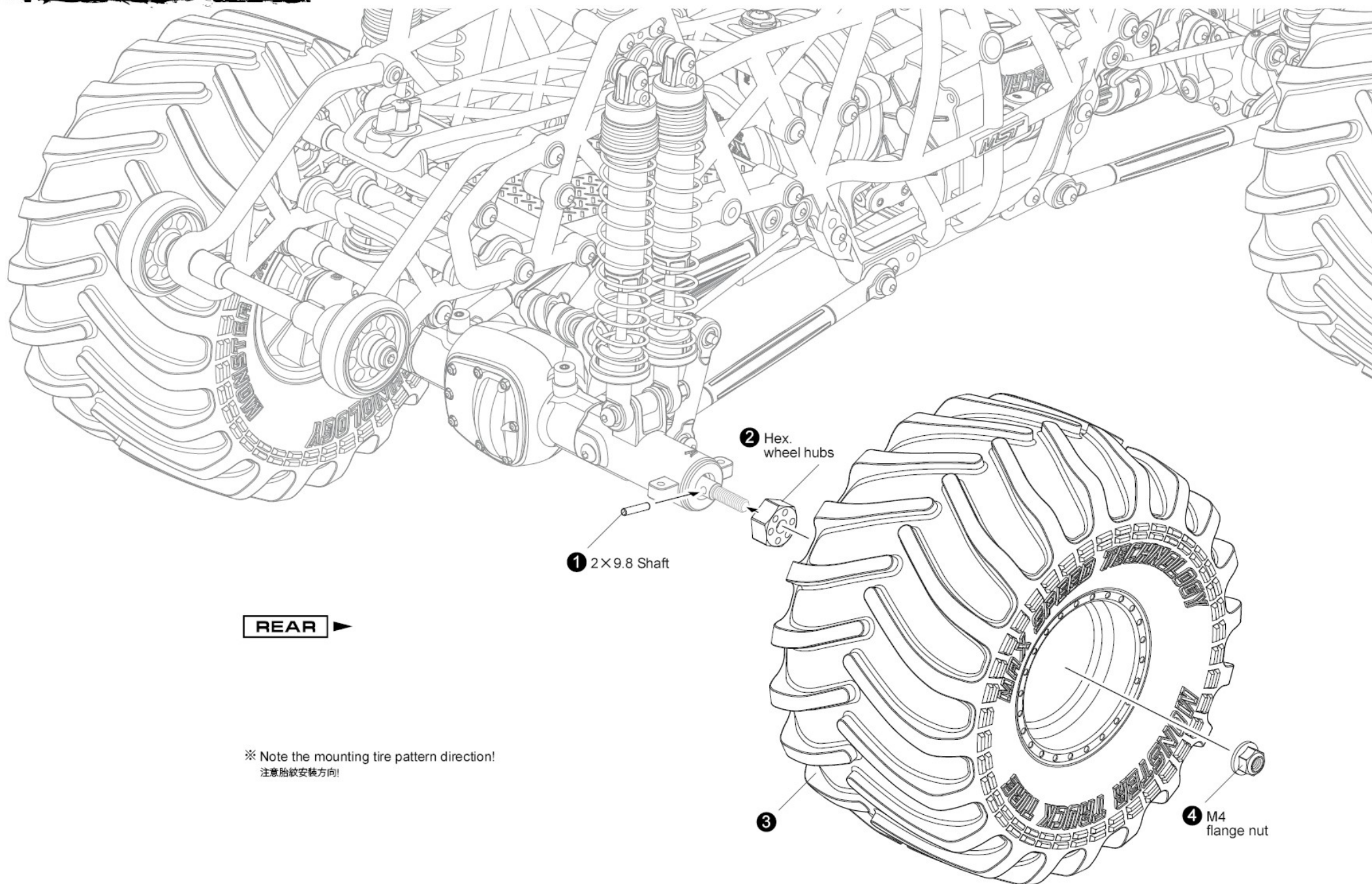
① 2×9.8 Shaft

② Hex.
wheel hubs

※ Note the mounting tire pattern direction!
注意胎紋安裝方向!

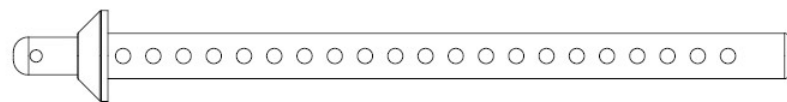
③

④ M4 flange nut

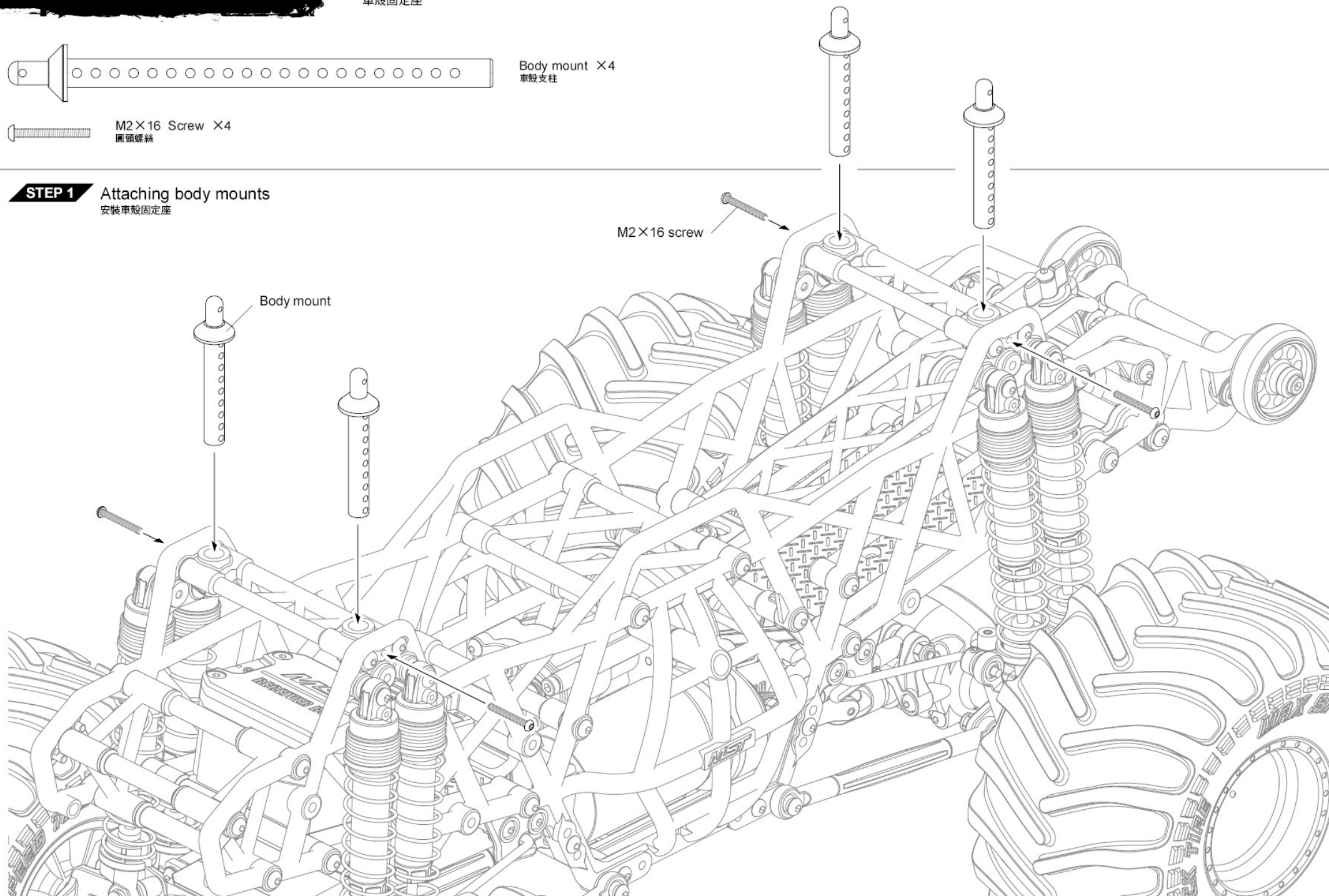


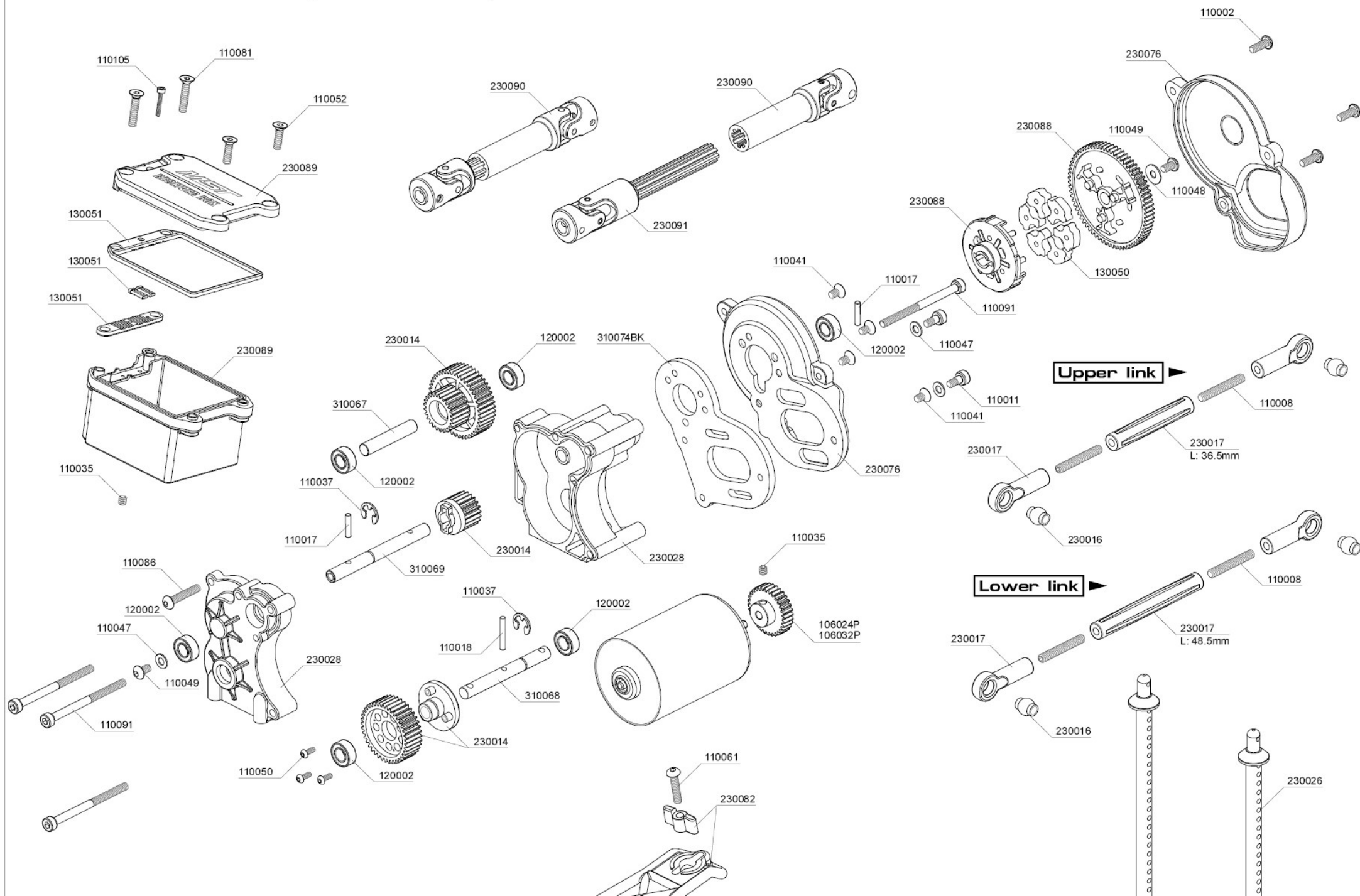
◀ BODY MOUNTS

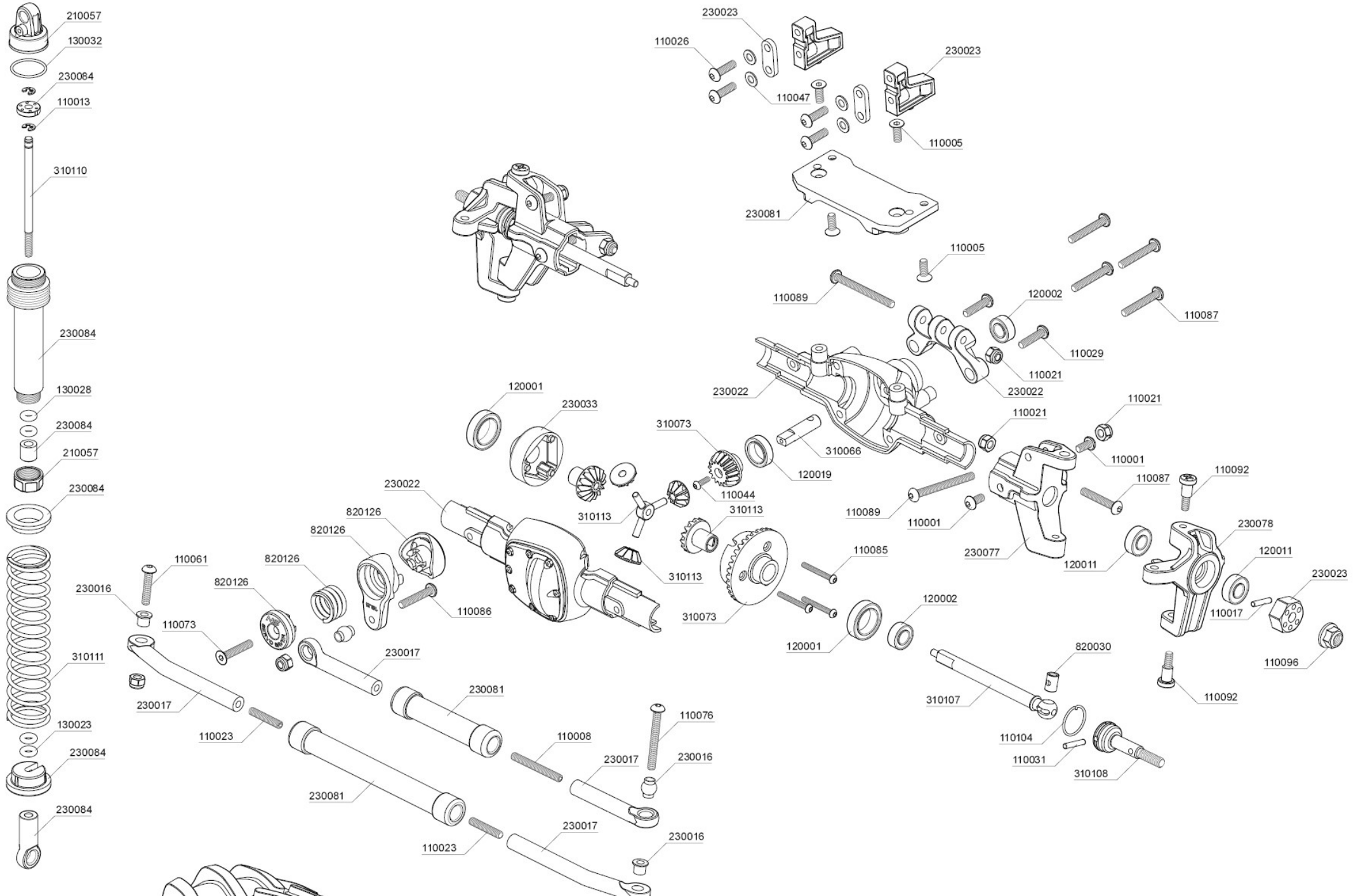
車殼固定座

Body mount ×4
車殼支柱M2×16 Screw ×4
圓頭螺絲**STEP 1** Attaching body mounts

安裝車殼固定座







PARTS CODE

103023	Monster truck wheels w/ monster truck tire	110052	Countersunk screw M3×10 (10)	130050	Cush drive rubber blocks (6)	230088	Cush drive rubber gear M06-70T
110001	Round head screw M3×6 (10)	110061	Round head screw M3×14 (6)	130051	Receiver case seals	230089	Receiver case set
110002	Round head screw M3×8 (10)	110073	Countersunk screw M3×16 (6)	210057	Damper cap set	230090	CMX Driveshaft
110005	Countersunk screw M3×8 (10)	110076	Round head screw M3×25 (6)	210582	MTX Sway bar set	230091	CMX Wheelbase 267mm accessories
110008	Set screw M3×25 (6)	110081	Countersunk screw M3×14 (6)	230014	CMX Deceleration gear set	310066	Bevel gear shaft
110011	Cap screw M3×6 (6)	110084	Round head screw M2×10 (6)	230016	CMX Ball connector set	310067	5X26.8 Shaft
110013	E-clip 2.0 (10)	110085	Round head screw M2×16 (6)	230017	CMX Link set	310068	Gear shaft
110016	R-clip 6.0 (10)	110086	Round head screw M3×16 (6)	230022	CMX Axle cover	310069	Main gear shaft
110017	Shaft 2×9.8 (10)	110087	Round head screw M3×18 (6)	230023	CMX Damper stay set	310073	Bevel gear set 36-15
110018	Shaft 2×13.8 (5)	110089	Round head screw M3×30 (6)	230026	CMX Car body post set	310074BK	CMX Motor mount (black)
110021	Lock nut M3 (5)	110090	Shaft screw M4×4×12 (6)	230028	CMX Deceleration gear box set	310107	CVD Axle (2)
110023	Set screw M3×16 (6)	110091	Cap screw M3×40 (6)	230029	CMX Axle lockout set	310108	Wheel axle (2)
110026	Round head screw M3×10 (10)	110092	King pin screw (4)	230033	CMX Heavy duty locker set	310109	Rear axle (2)
110029	Round head screw M3×12 (6)	110096	Lock nut M4 (5)	230076	MTX Dust cover	310110	Piston rod (4)
110035	Set screw M3×3 (6)	110104	G-clip 11.0 (10)	230077	MTX C hub carrier set	310111	Coil spring 72mm (4)
110037	E-clip 4.0 (10)	110105	Cap screw M1.6×10 (10)	230078	MTX Knuckle set	310113	Diff. gear set
110041	Countersunk screw M3×5 (10)	120001	Ball bearing 10×15 (4)	230079	MTX Body post mount	720002	MST C-10 Body
110043	Countersunk screw M3×12 (10)	120002	Ball bearing 5×10 (4)	230080	MTX Electrics tray	720008	MST TH1 body (clear)
110044	Round head screw M2×6 (6)	120011	Ball bearing 5×11 (4)	230081	MTX Gear box chassis set	820030	Cross joint (2)
110047	Spacer 3×6×0.5 (8)	120019	Ball bearing 8×12 (2)	230082	MTX Battery strap	820126	NS High-torque servo saver
110048	Spacer 3×8×0.5 (8)	130023	O-ring P3 (black) (10)	230083	MTX Cage		
110049	Round head screw M3×5 (10)	130028	Damper O-ring P3 (blue) (10)	230084	Damper parts (2)		
110050	Round head screw M2×5 (6)	130032	Damper cap O-ring (10)	230087	MTX Wheelie Bar set		

部品編號

103023	大腳胎框組	110052	六角沉頭螺絲 M3×10 (10)	130050	緩衝膠圈 (6)	230088	緩衝齒座組 M06-70T
110001	六角半圓頭螺絲 M3×6 (10)	110061	六角半圓頭螺絲 M3×14 (6)	130051	防水膠圈組	230089	接收機盒組
110002	六角半圓頭螺絲 M3×8 (10)	110073	六角沉頭螺絲 M3×16 (6)	210057	避震器上下蓋組	230090	CMX 傳動軸
110005	六角沉頭螺絲 M3×8 (10)	110076	六角半圓頭螺絲 M3×25 (6)	210582	MTX 防傾桿組	230091	CMX 軸距267mm配件
110008	六角止付螺絲 M3×25 (6)	110081	六角沉頭螺絲 M3×14 (6)	230014	CMX 減速齒組	310066	傘齒軸
110011	六角有頭螺絲 M3×6 (半牙) (6)	110084	六角半圓頭螺絲 M2×10 (6)	230016	CMX 球頭組	310067	5×26.8 齒軸
110013	E扣 2.0 (10)	110085	六角半圓頭螺絲 M2×16 (6)	230017	CMX 拉桿組	310068	輸出軸
110016	R銷 6.0 (10)	110086	六角半圓頭螺絲 M3×16 (6)	230022	CMX 車軸殼	310069	主齒軸
110017	插銷 2×9.8 (10)	110087	六角半圓頭螺絲 M3×18 (6)	230023	CMX 避震架組	310073	傘齒組 36-15
110018	插銷 2×13.8 (5)	110089	六角半圓頭螺絲 M3×30 (6)	230026	CMX 車殼支柱組	310074BK	CMX 馬達座 (黑)
110021	防鬆螺帽 M3 (5)	110090	銷釘螺絲 M4×4×12 (6)	230028	CMX 減速箱組	310107	CVD 輪軸 (2)
110023	六角止付螺絲 M3×16 (6)	110091	六角有頭螺絲 M3×40 (半牙) (6)	230029	CMX 車軸固定套組	310108	萬向接杯 (2)
110026	六角半圓頭螺絲 M3×10 (10)	110092	大王螺絲 (4)	230033	CMX 直軸連接座組	310109	後輪軸
110029	六角半圓頭螺絲 M3×12 (6)	110096	防鬆螺帽 M4 (5)	230076	MTX 防塵殼組	310110	避震軸心 (4)
110035	六角止付螺絲 M3×3 (6)	110104	G扣 11.0 (10)	230077	MTX 轉向C座組	310111	避震彈簧 72mm (4)
110037	E扣 4.0 (10)	110105	六角有頭螺絲 M1.6×10 (10)	230078	MTX 轉向座組	310113	傘差齒輪組
110041	六角沉頭螺絲 M3×5 (10)	120001	培林 10×15 (4)	230079	MTX 車殼支柱座組	720002	MST C-10 車殼
110043	六角沉頭螺絲 M3×12 (10)	120002	培林 5×10 (4)	230080	MTX 電裝座組	720008	MST TH1 車殼 (透明)
110044	六角半圓頭螺絲 M2×6 (6)	120011	培林 5×11 (4)	230081	MTX 減速箱底盤組	820030	連接軸 (2)
110047	墊片 3×6×0.5 (8)	120019	培林 8×12 (2)	230082	MTX 電池壓板組	820126	NS 高扭力伺服緩衝器
110048	墊片 3×8×0.5 (8)	130023	O環 P3 (黑) (10)	230083	MTX 車架		
110049	六角半圓頭螺絲 M3×5 (10)	130028	阻尼器O環 P3 (藍) (10)	230084	避震膠件組 (2)		
110050	六角半圓頭螺絲 M2×5 (6)	130032	避震上蓋O環 (10)	230087	MTX 第五輪組		

026202