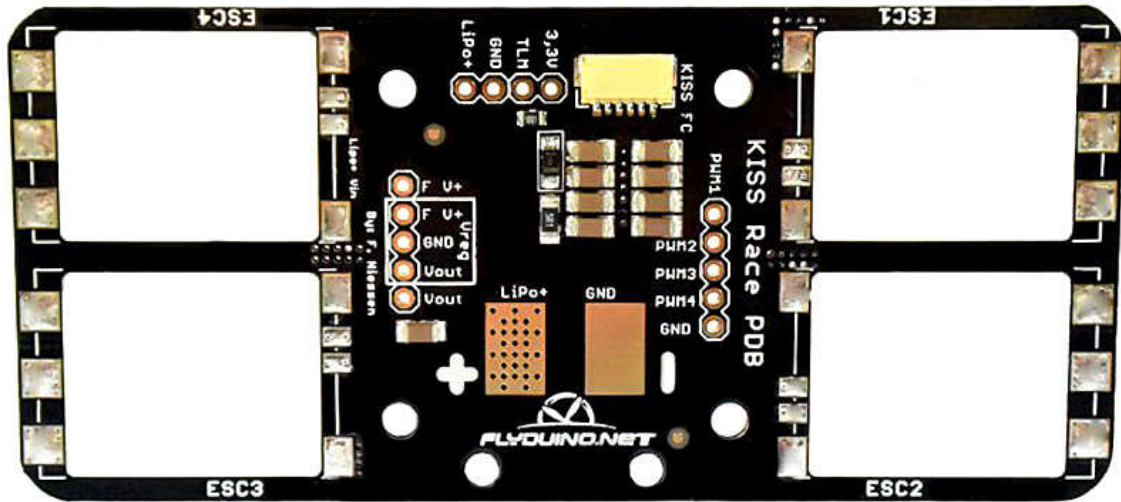
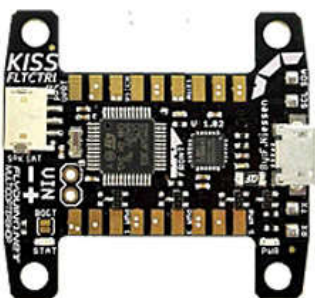


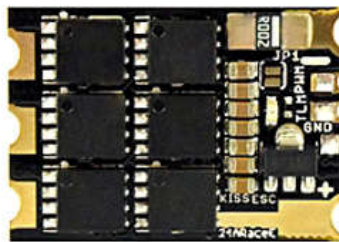
Flyduino KISS PDB for 24A ESCs Manual v1.0



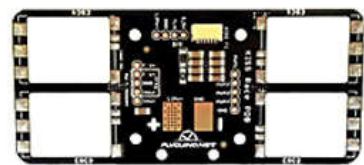
The KISS PDB/Carrier Board for KISS FC and KISS ESC 24A



KISS 32bit FC



KISS 32bit ESC 24A



KISS PDB / 24A ESC

Needed Parts for the FC/ESC/PDB Combo

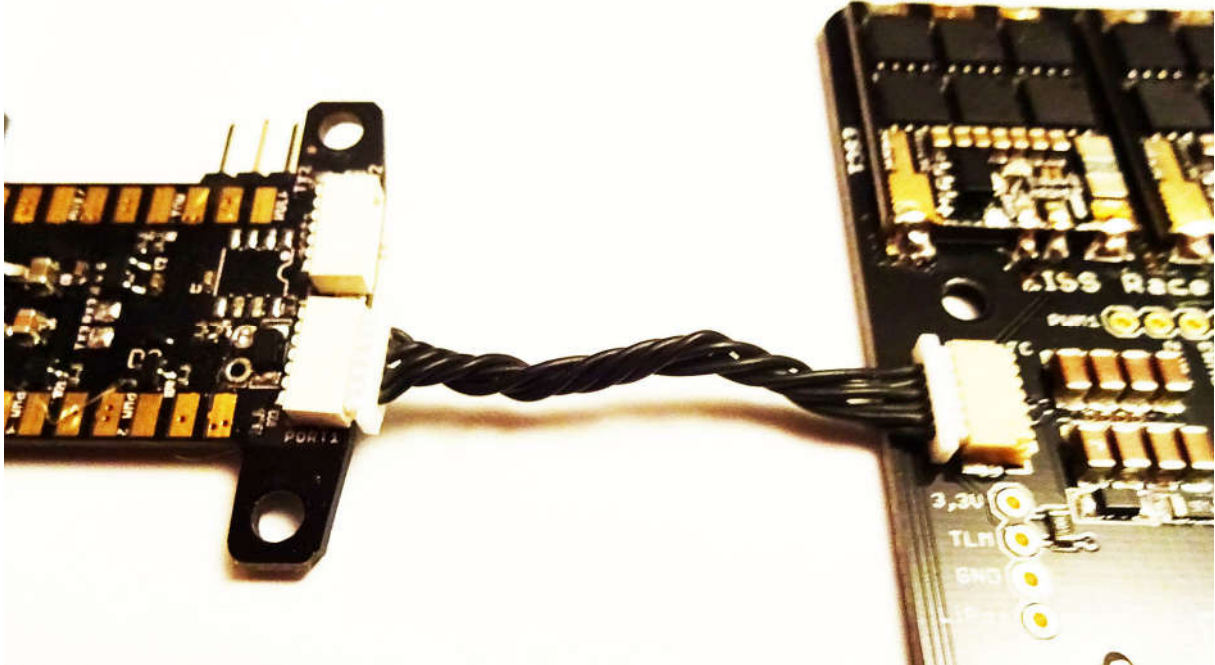


- KISS FC
- KISS ESC 24A
- KISS PDB/Carrier Board for ESC 24A
- Connection Cable for KISS FC and PDB

Soldering the ESC24A is self explanatory. There's only one way how they fit. The 3 pads each on the edges are for the motor wires. Rotation direction can be selected via solder jumper.

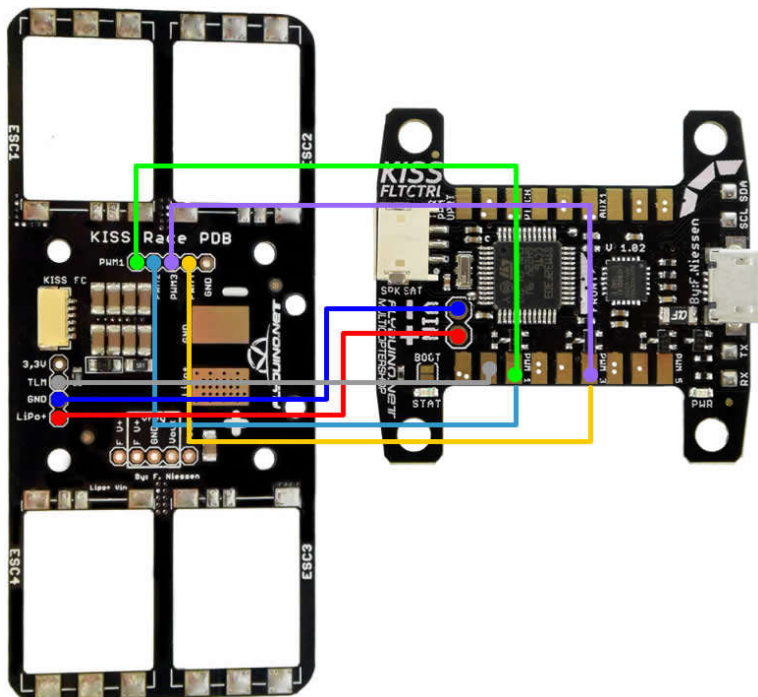
Possible Connections of the KISS FC and PDB

Connection via Special Cable



The most easiest and elegant solution is using the special connection cable. Plug & Play for the PWM signal and telemetry wires. You will only need to wire the voltage input.

Direct Wiring



The KISS FC can also be wired directly like shown above.

The PWM signal lines and power supply can either be directly wired or by using pins and plugs for the connection.

Alternatively you can also wire the Vin +/- directly to the Lipo pads.

Since KISS ESC 24A will be used it's worth wiring the telemetry (TLM) also for later use via OSD.

