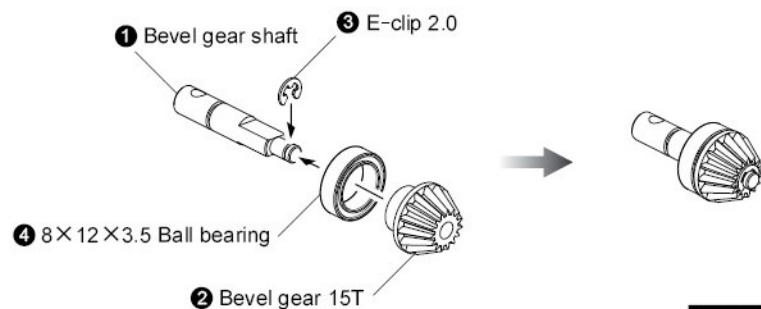
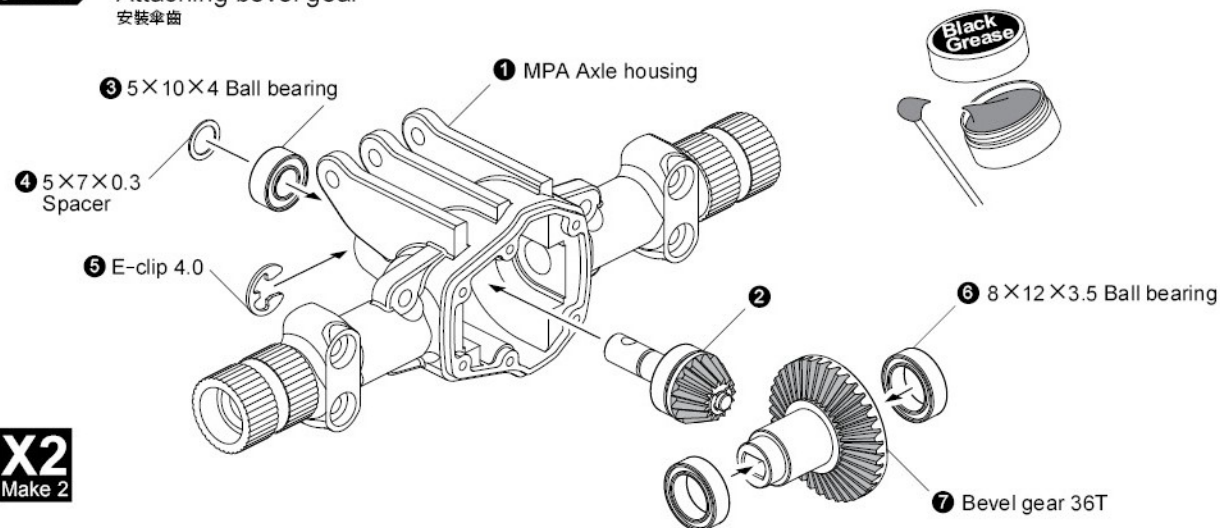
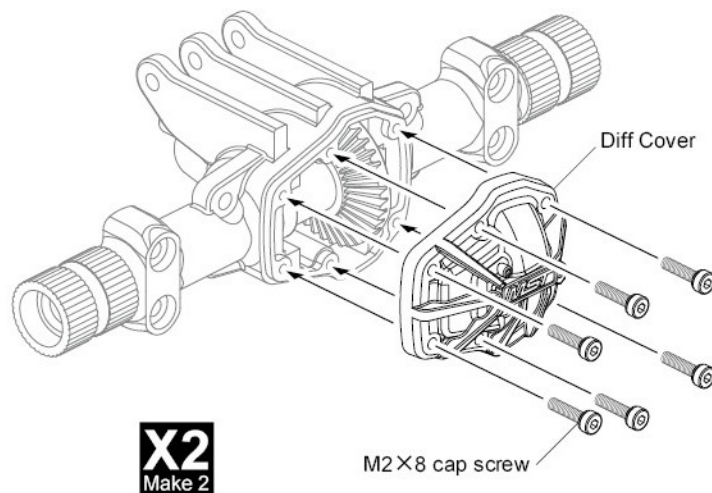
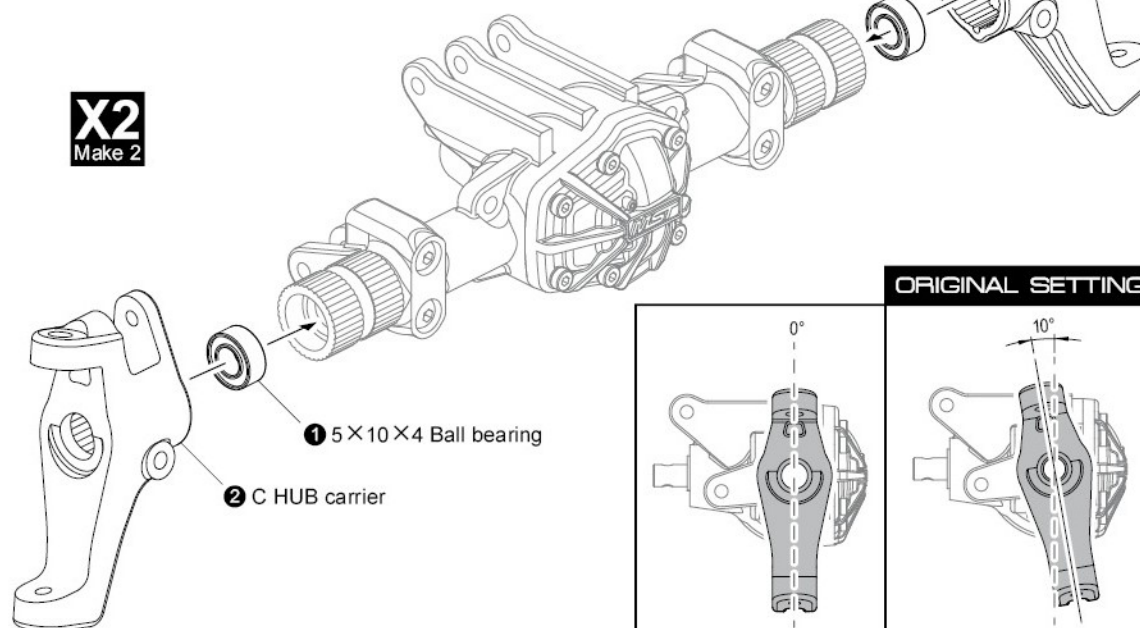
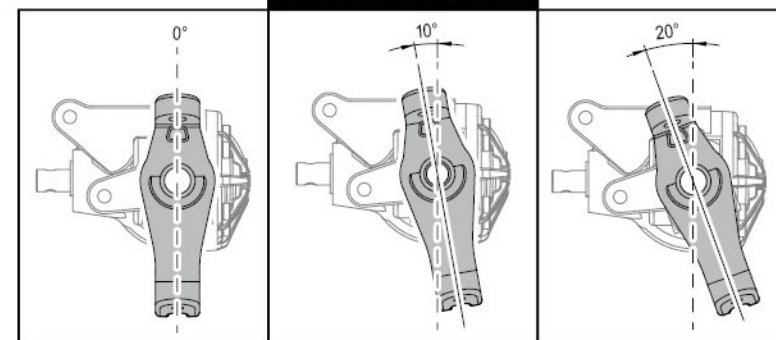
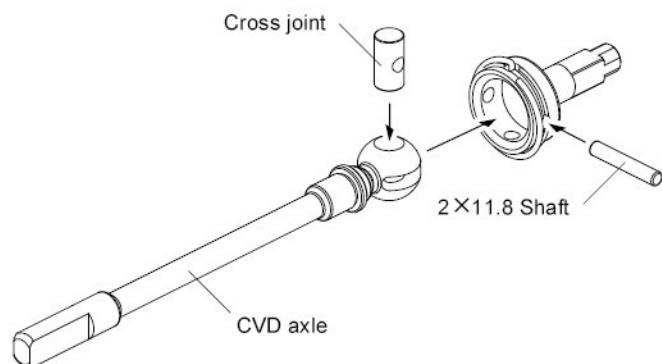
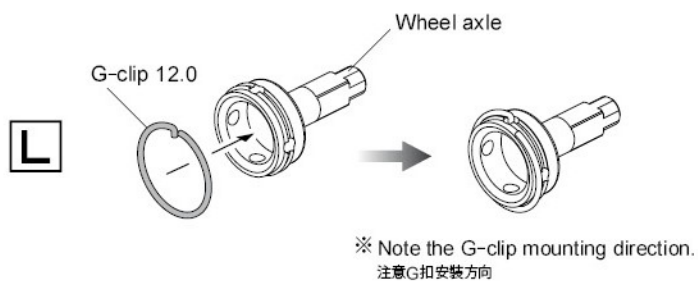
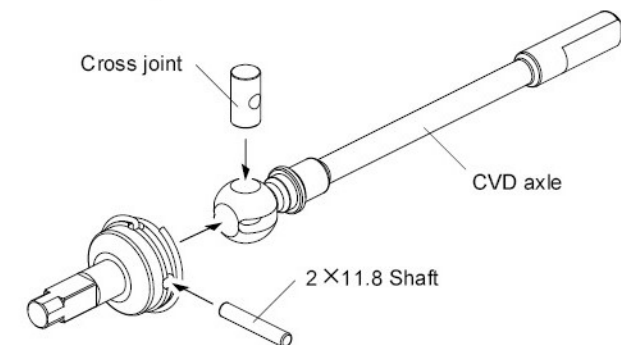
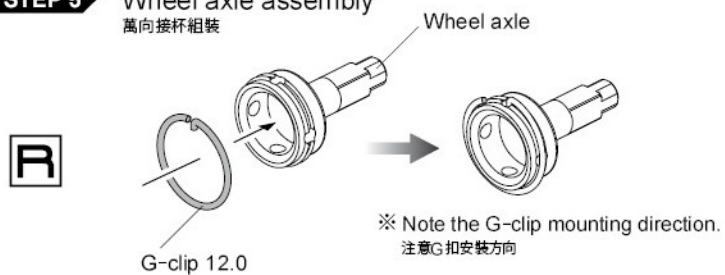
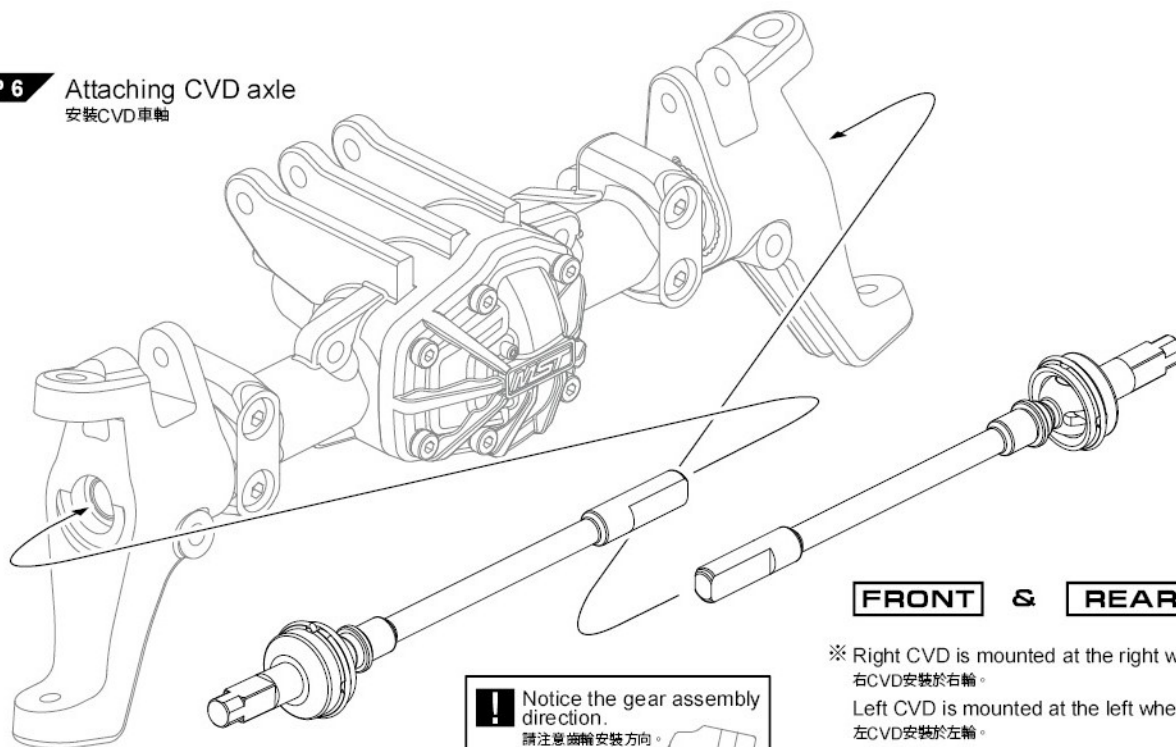
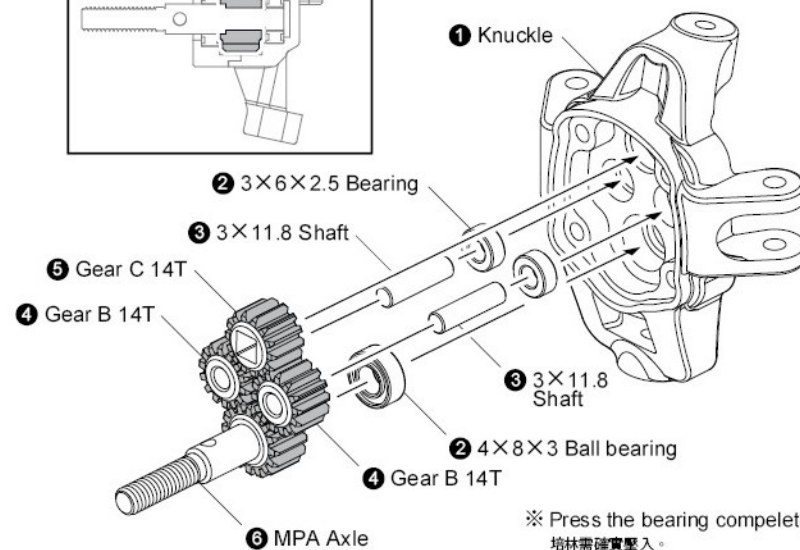
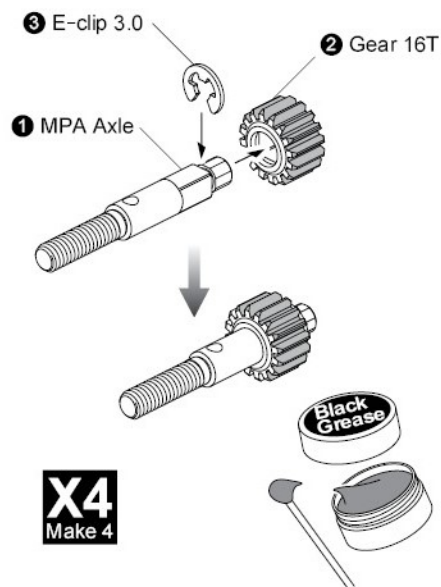
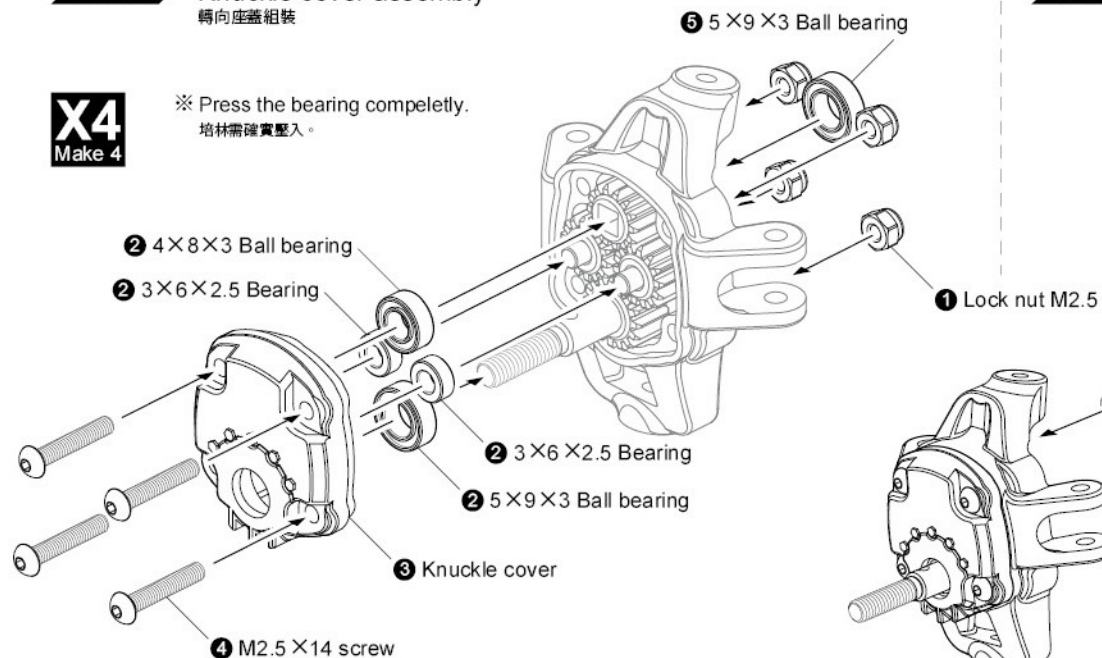
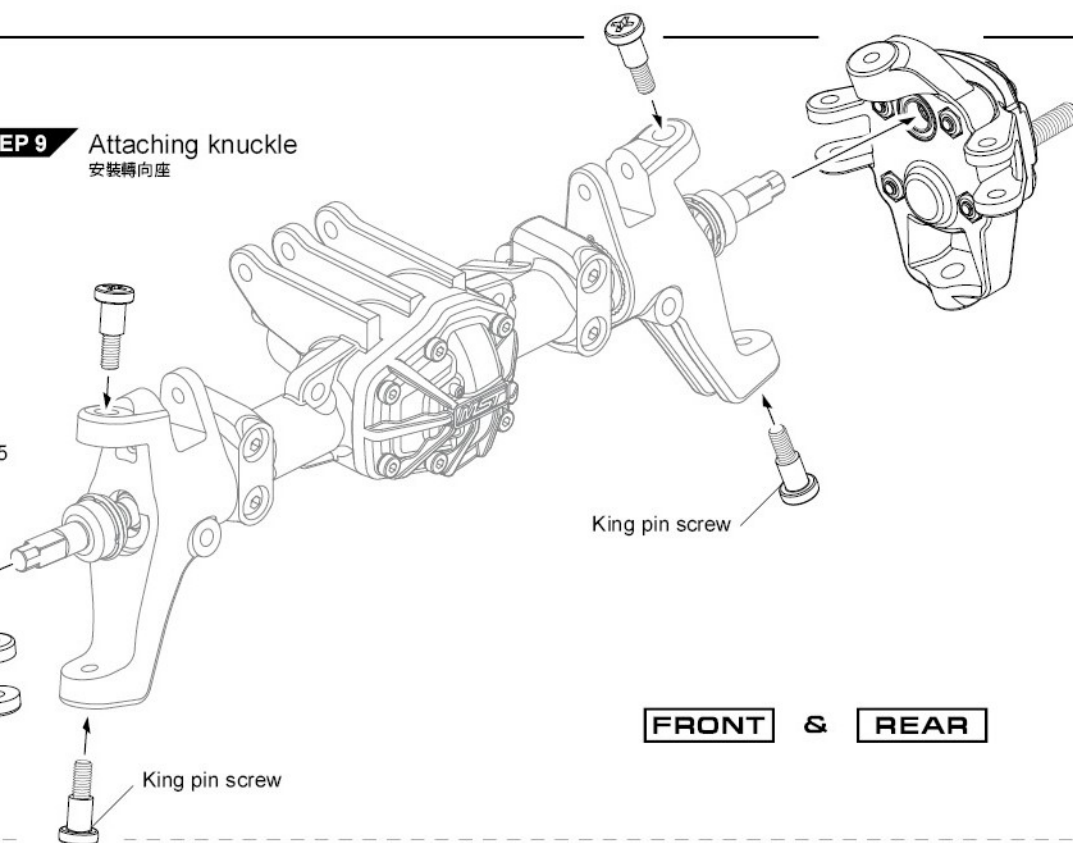
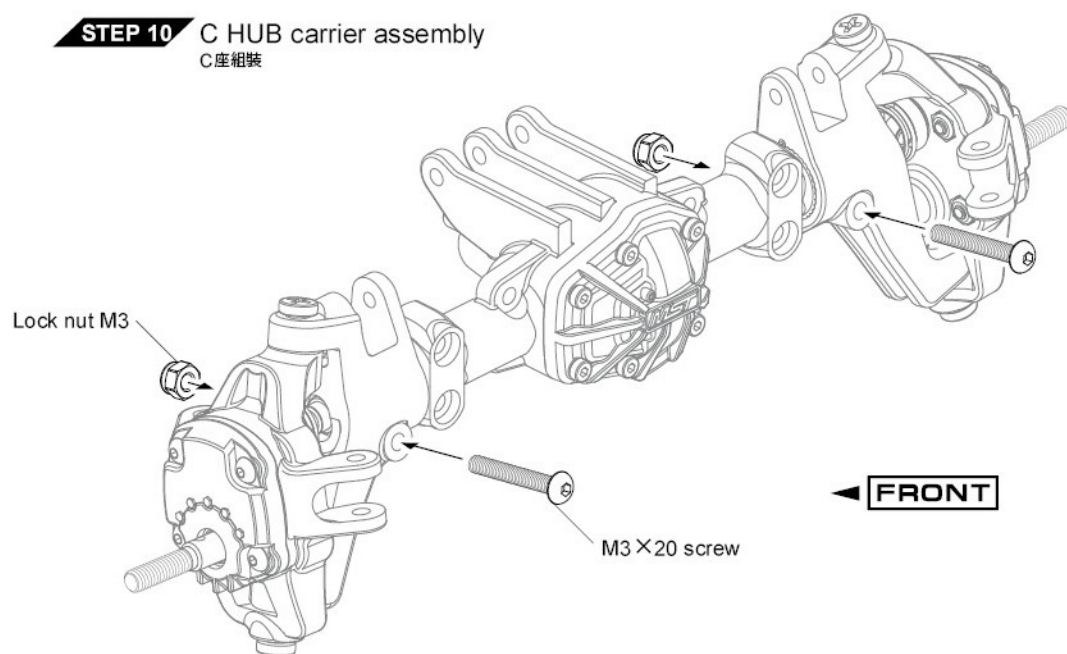
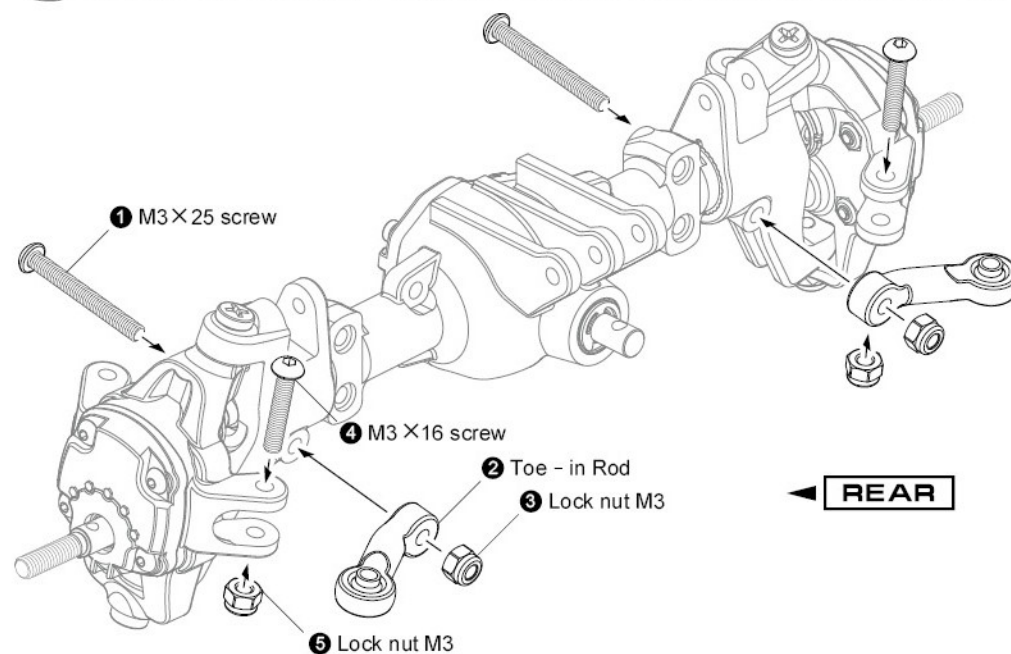
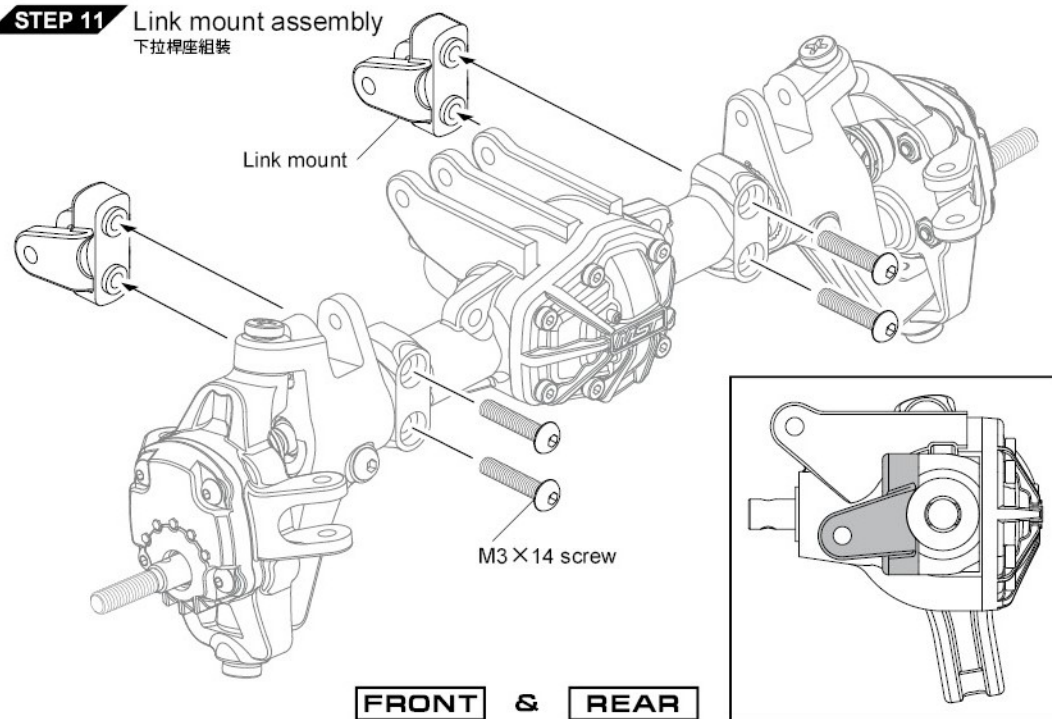
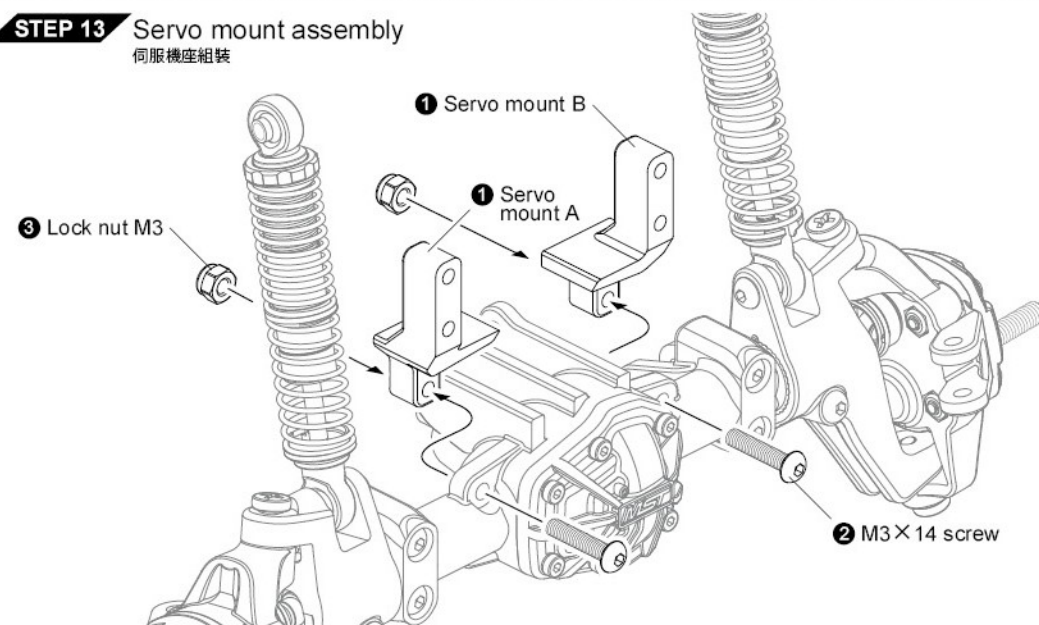
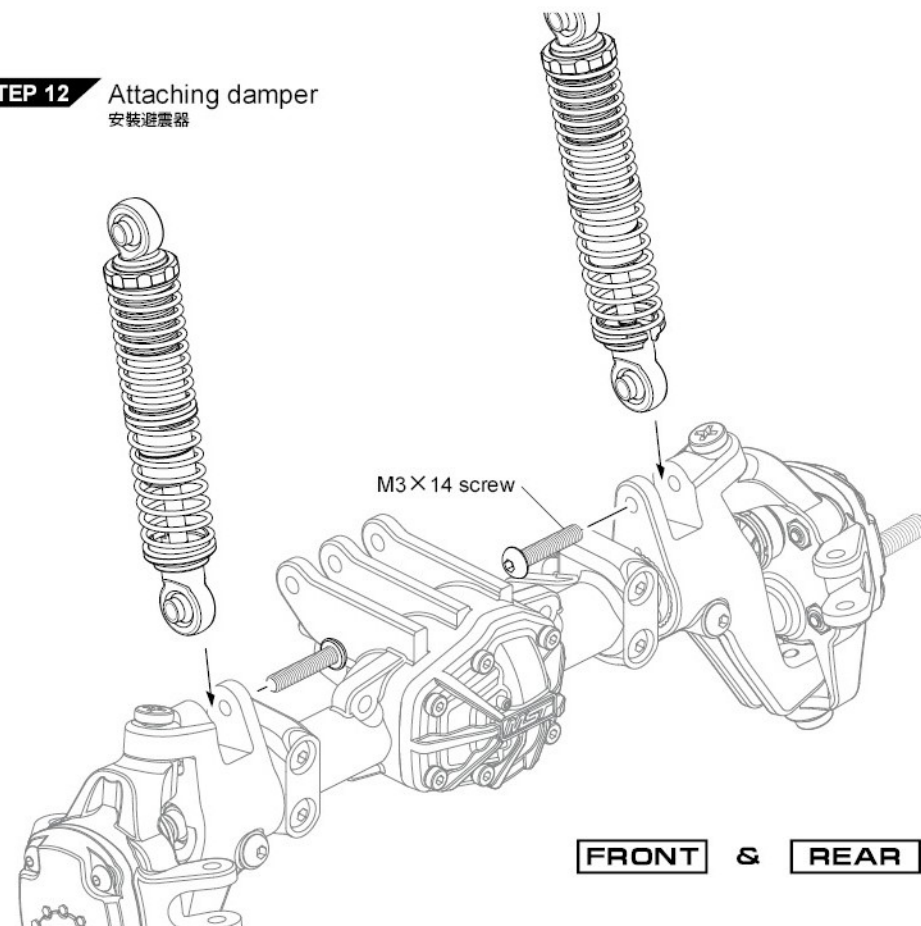
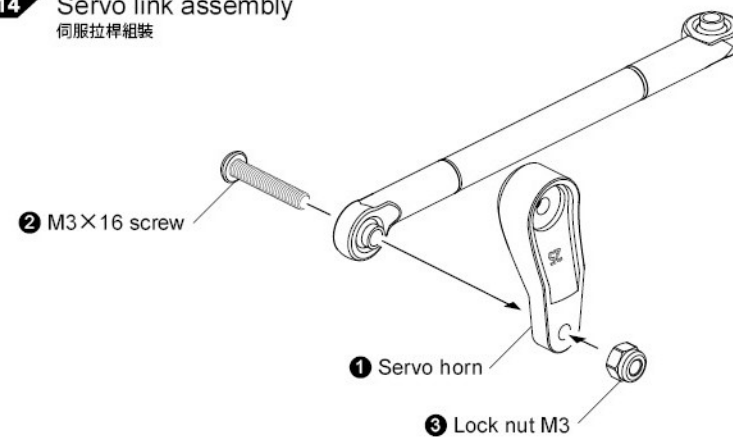


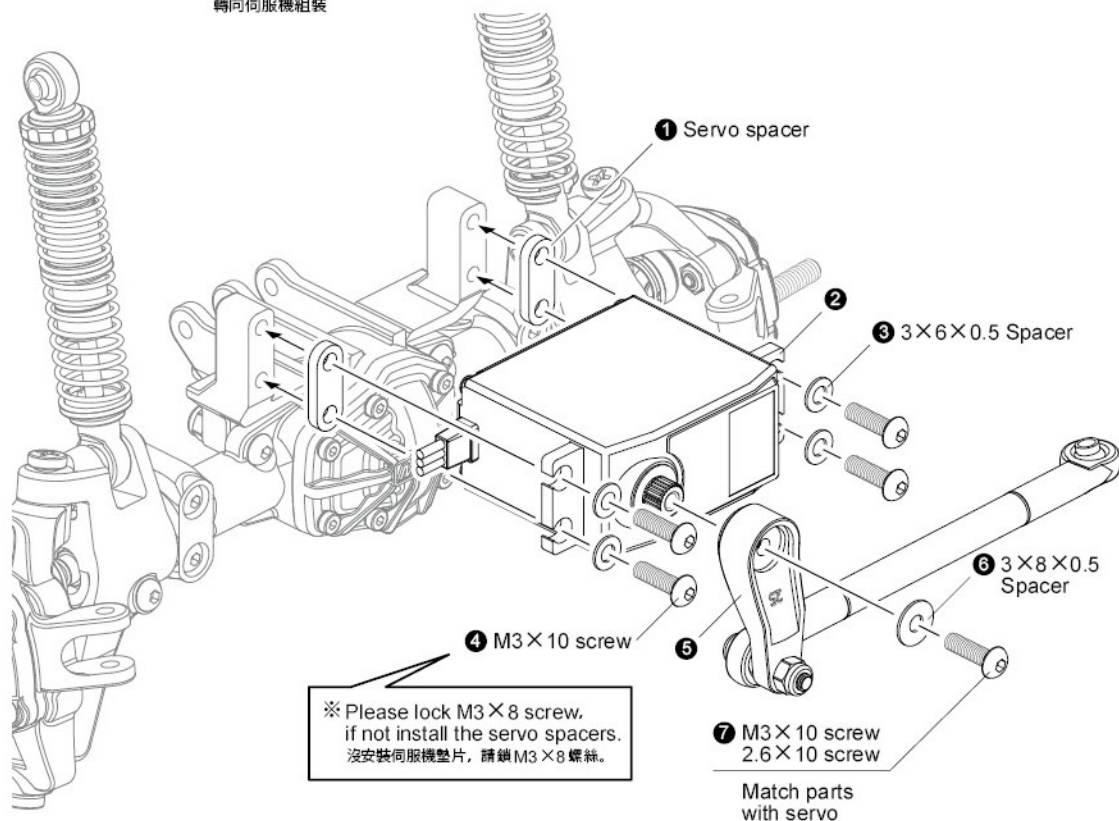
STEP 1 Bevel gear assembly
小傘齒組裝**STEP 2** Attaching bevel gear
安裝傘齒**STEP 3** Attaching diff cover
安裝車軸殼蓋**STEP 4** C HUB carrier assembly
C座組裝**ORIGINAL SETTING**

STEP 5 Wheel axle assembly
萬向接杯組裝**STEP 6** Attaching CVD axle
安裝CVD車軸**STEP 7** Deceleration gear assembly
減速齒組裝

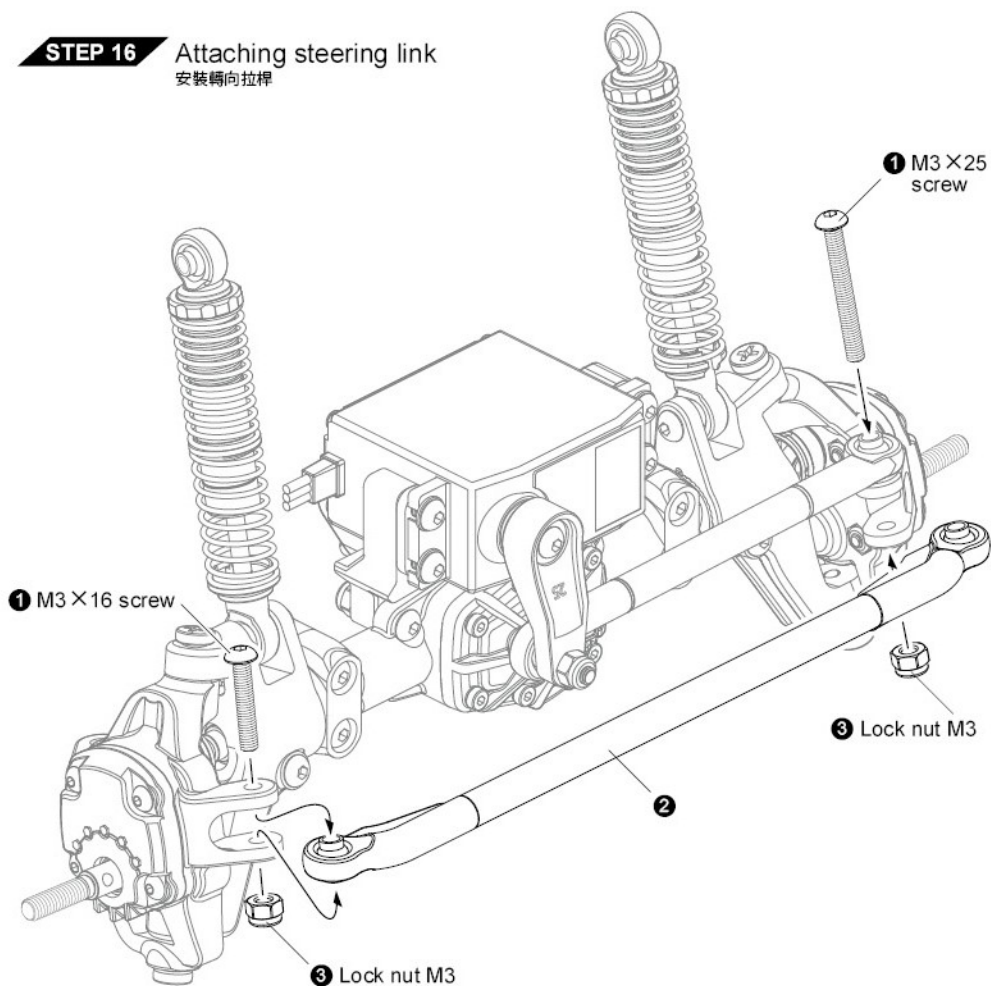
STEP 8 Knuckle cover assembly
轉向座蓋組裝**X4**
Make 4※ Press the bearing completely.
培林需確實壓入。**STEP 9** Attaching knuckle
安裝轉向座**FRONT** & **REAR****STEP 10** C HUB carrier assembly
C座組裝**FRONT****REAR**

STEP 11 Link mount assembly
下拉桿座組裝**STEP 13** Servo mount assembly
伺服機座組裝**STEP 12** Attaching damper
安裝避震器**STEP 14** Servo link assembly
伺服拉桿組裝

STEP 15 Steering servo assembly
轉向伺服機組裝



STEP 16 Attaching steering link
安裝轉向拉桿



M3×14 screw ×4
圓頭螺絲



Shaft screw ×4
銷釘螺絲



M3×18 screw ×4
圓頭螺絲



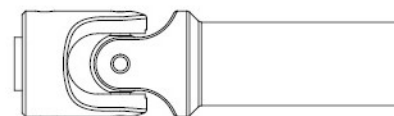
Lock nut M3 ×6
防鬆螺帽



M3×30 screw ×2
圓頭螺絲



2.8×1.9 O-ring ×6
O環



Driveshaft ×4
傳動軸

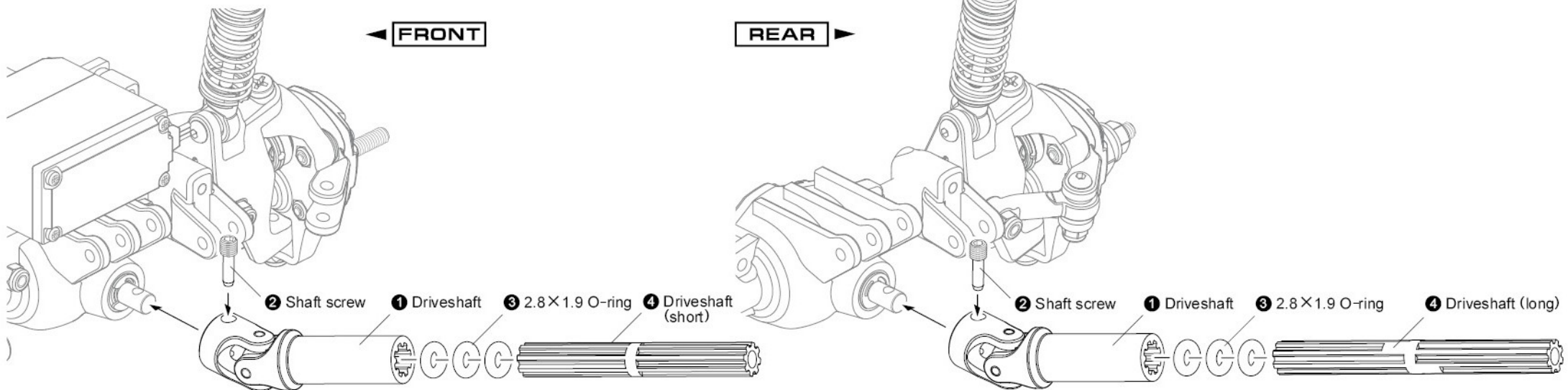


Driveshaft (short) ×1
傳動軸

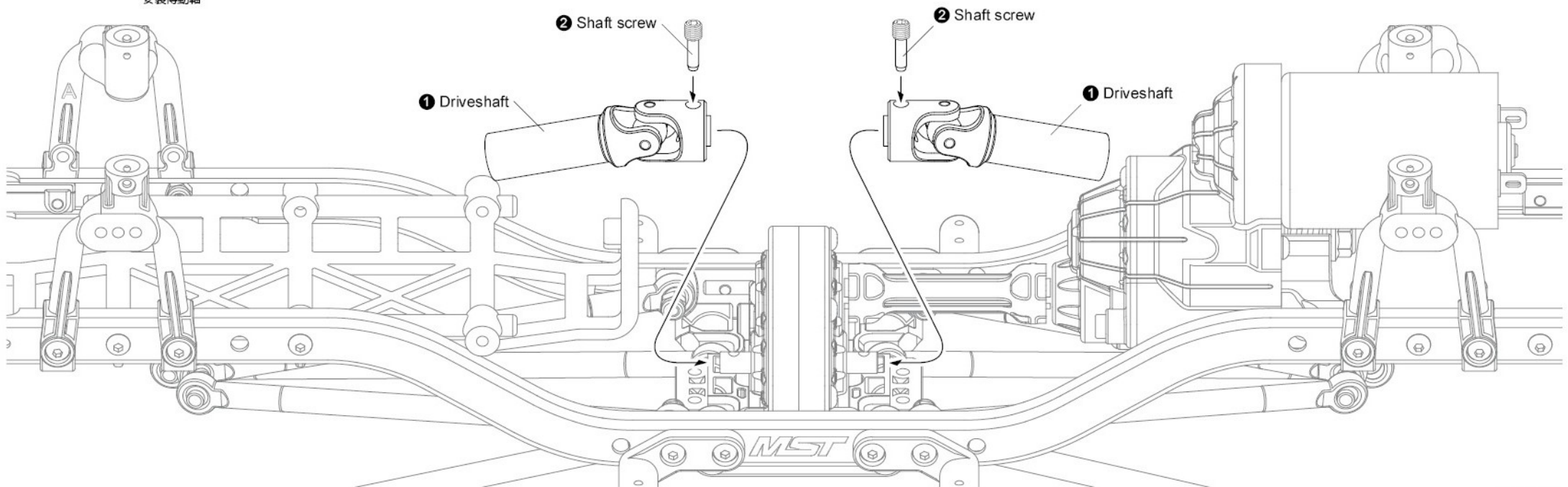


Driveshaft (long) ×1
傳動軸

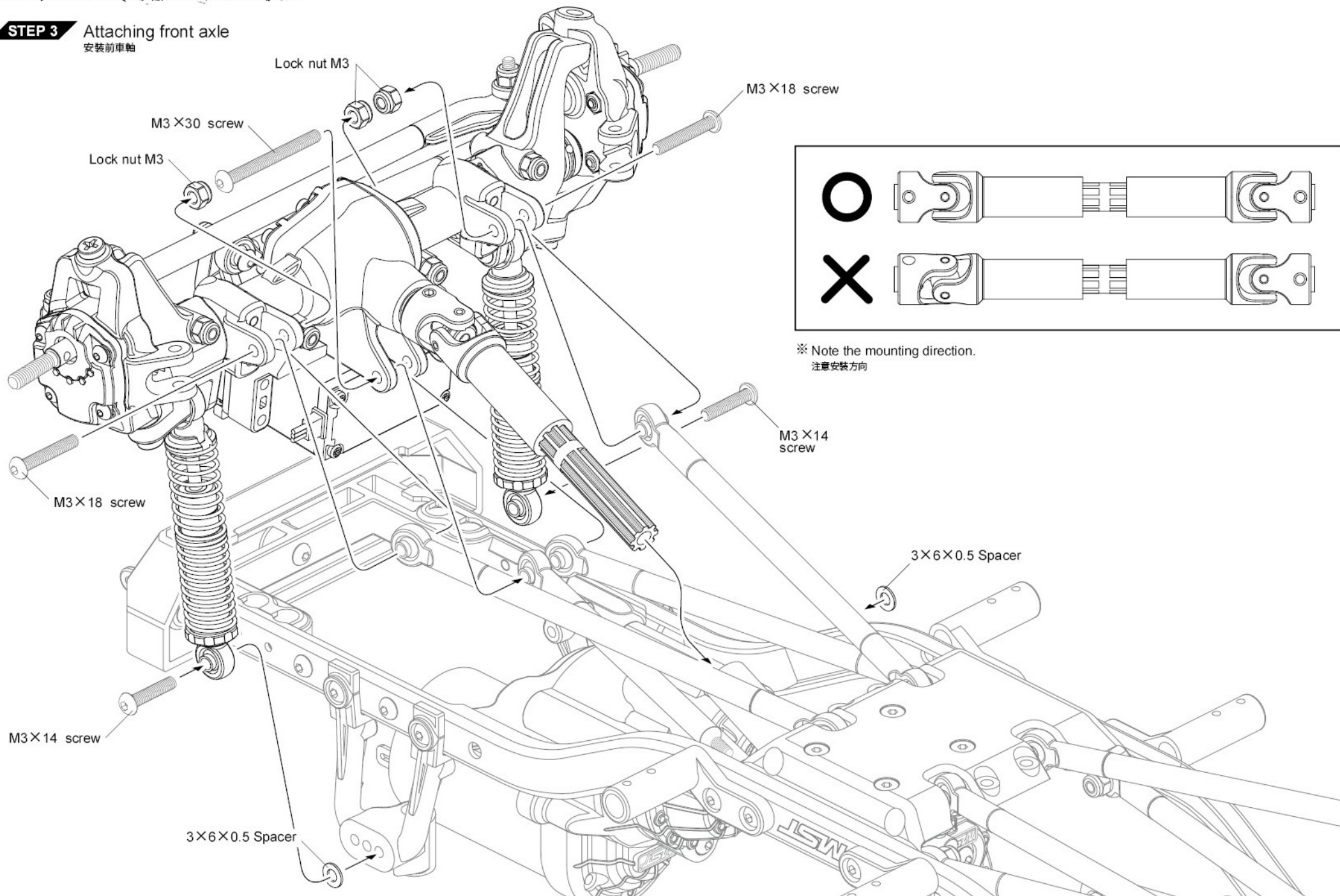
STEP 1 Attaching driveshaft 安裝傳動軸

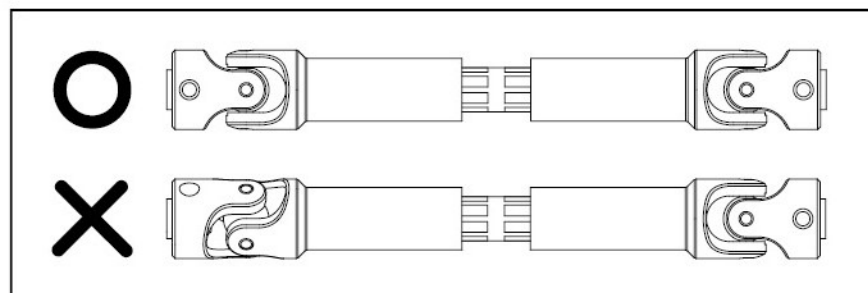


STEP 2 Attaching driveshaft 安裝傳動軸

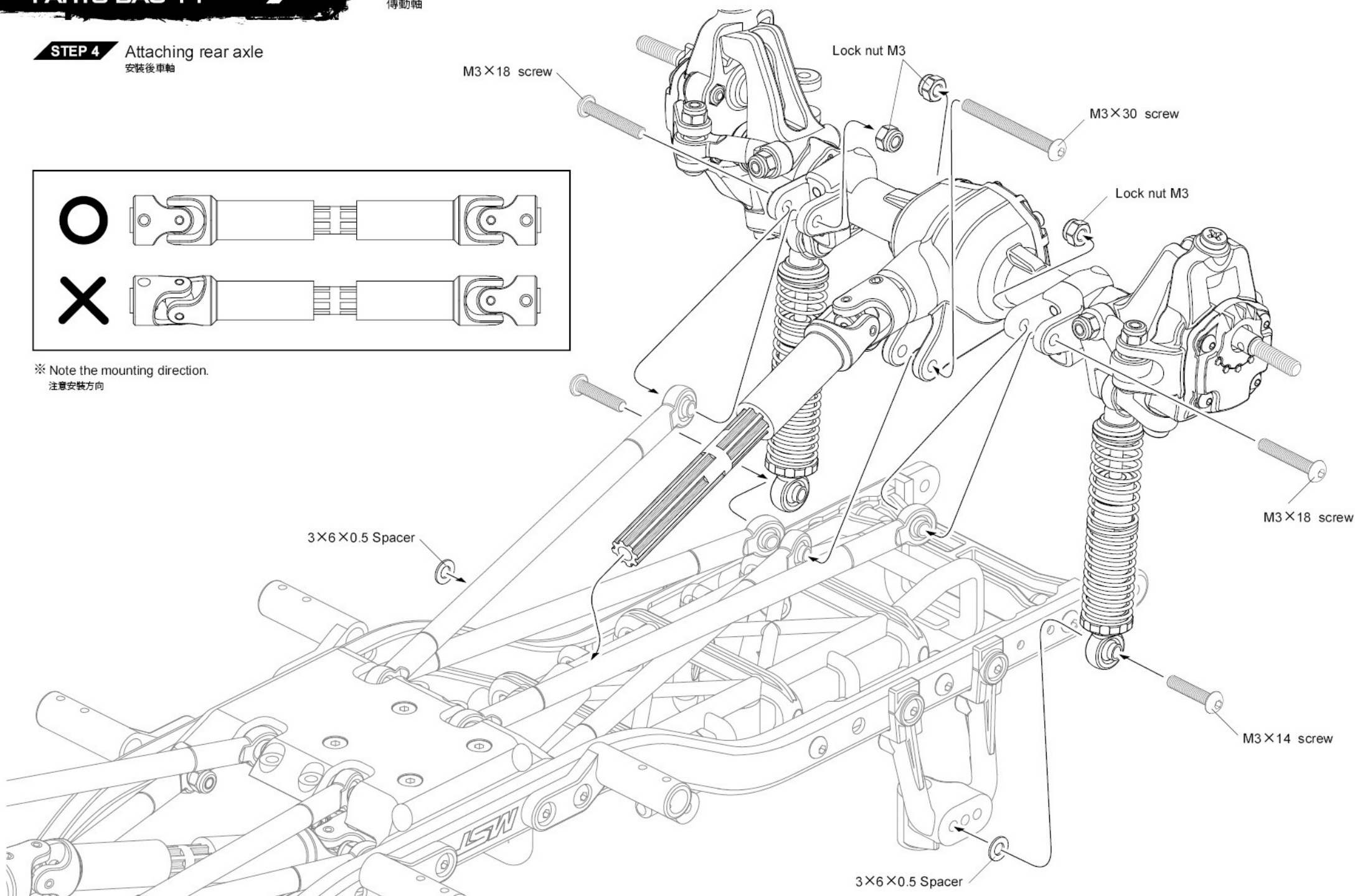


STEP 3 Attaching front axle 安裝前車軸



STEP 4 Attaching rear axle
安裝後車軸

※ Note the mounting direction.
注意安裝方向

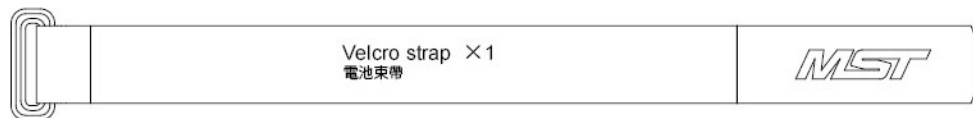




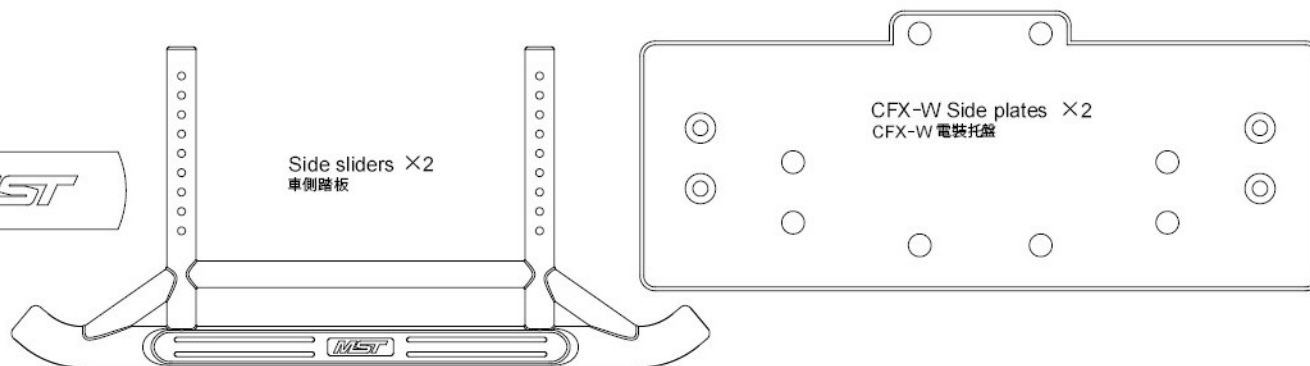
M2 x 10 screw x 2
圓頭螺絲



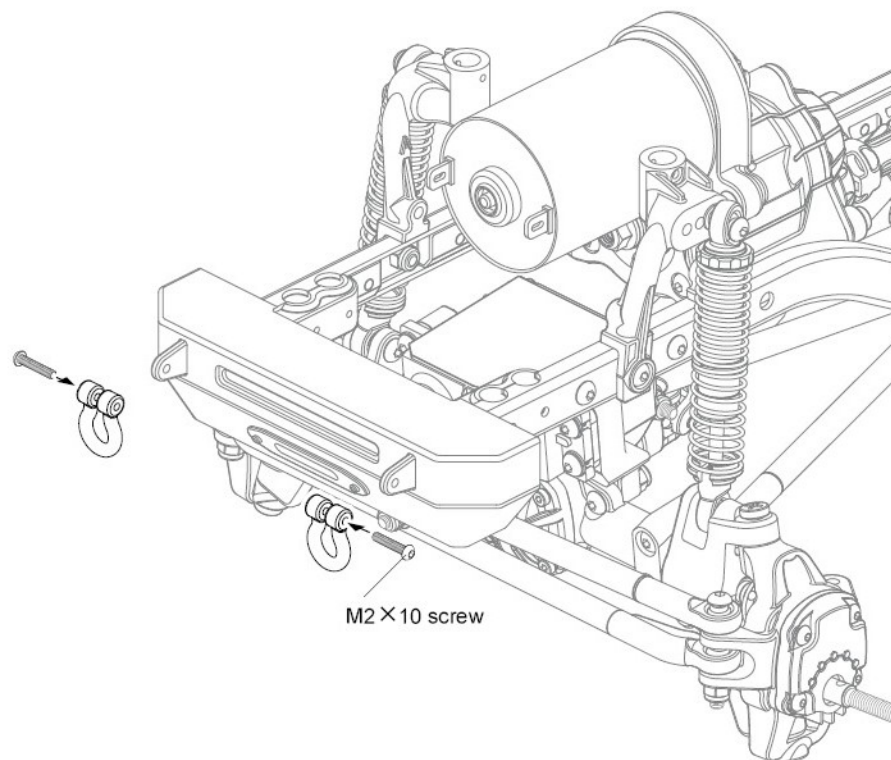
M2 x 12 screw x 8
圓頭螺絲



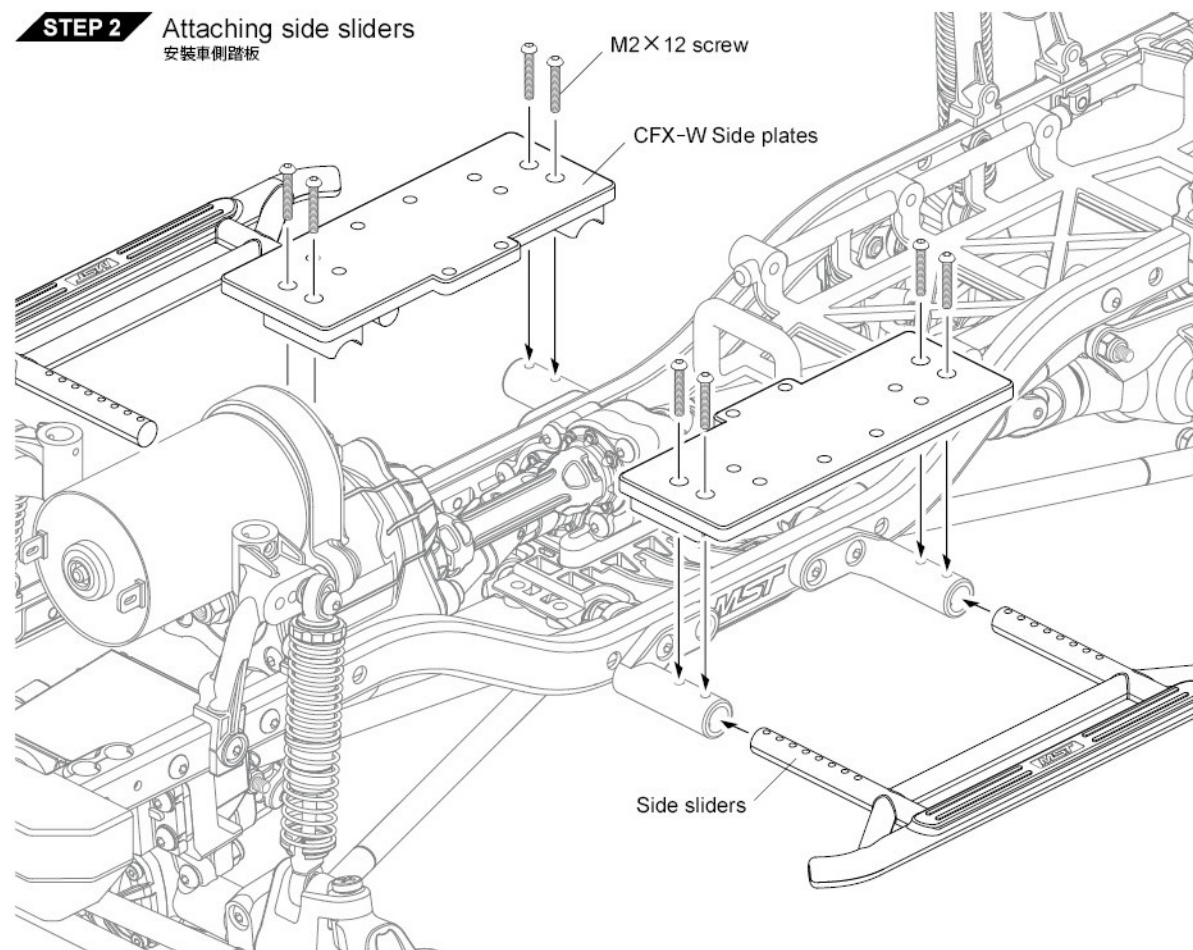
Velcro strap x 1
電池束帶



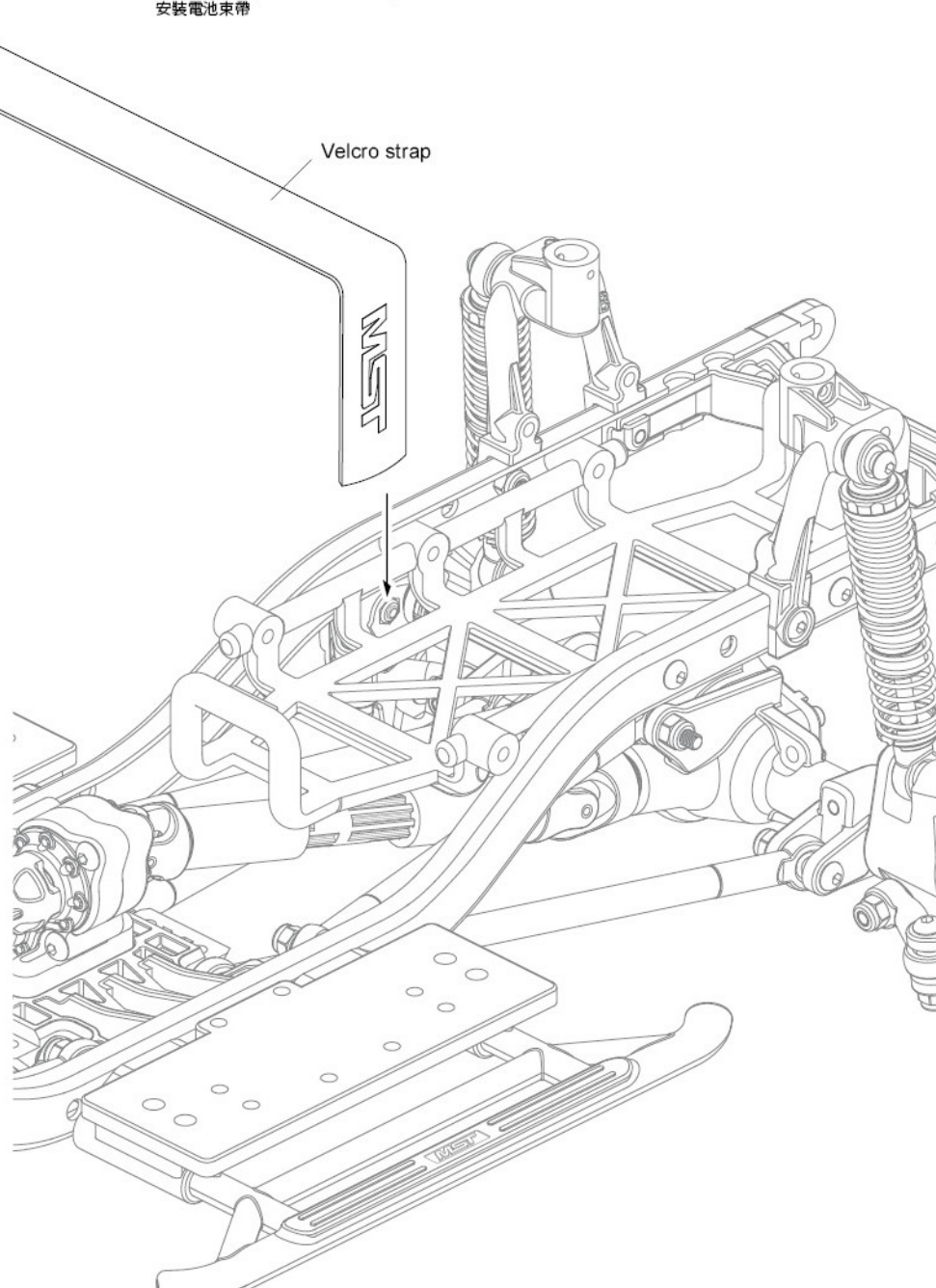
STEP 1 Shackle assembly
拖車環組裝



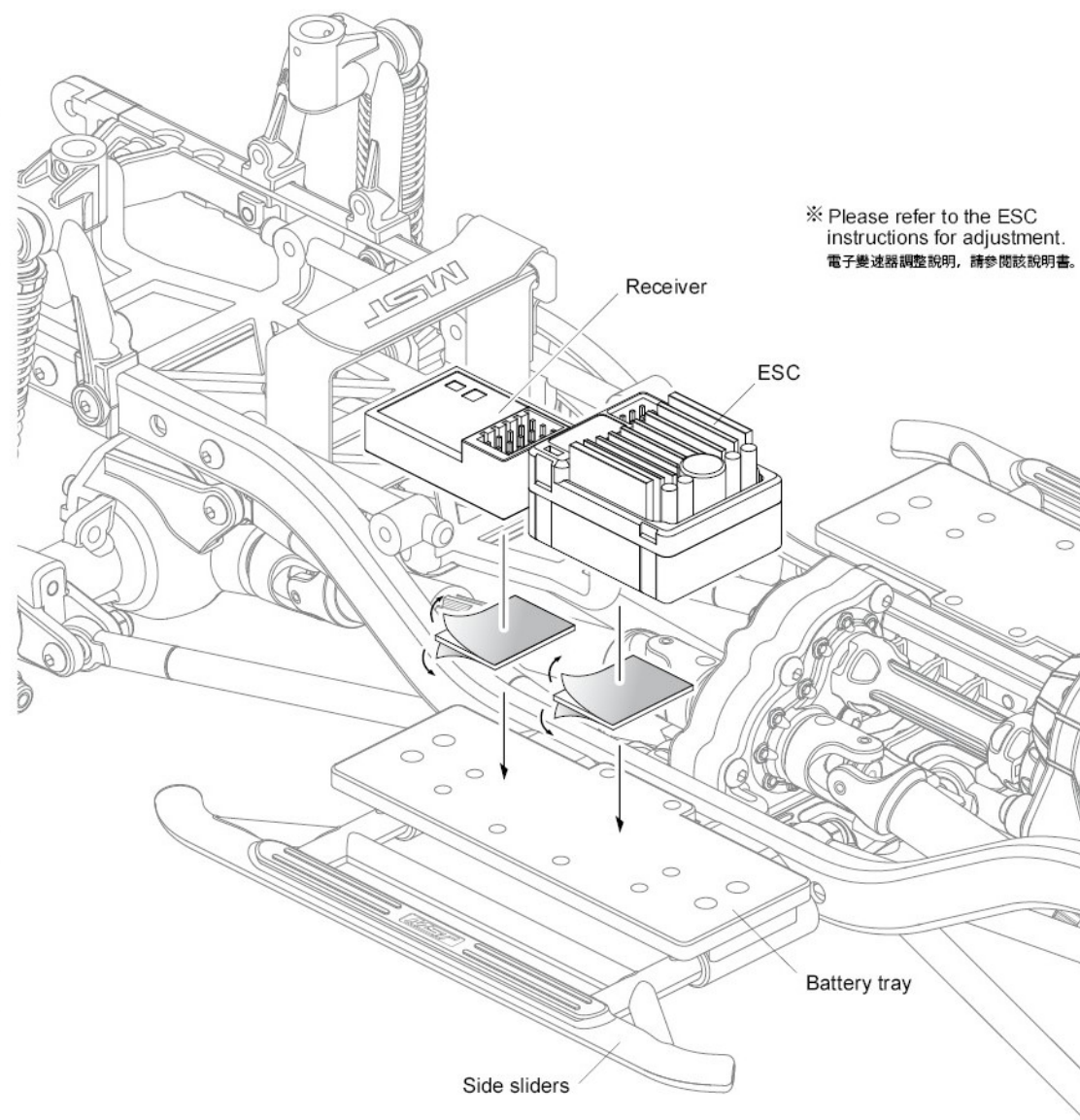
STEP 2 Attaching side sliders
安裝車側踏板



STEP 3 Attaching velcro strap
安裝電池束帶



STEP 4 Attaching ESC、receiver
安裝電子變速器、接收機

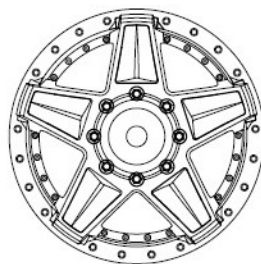




2×9.8 Shaft ×4
插銷

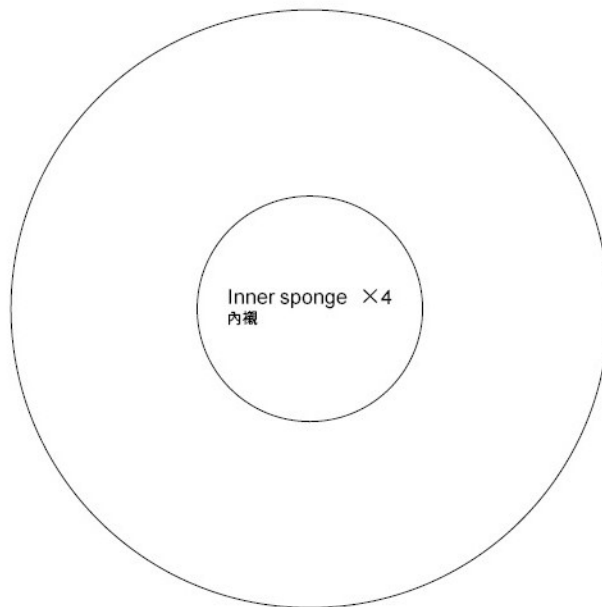


Lock nut M4 ×4
防鬆螺帽

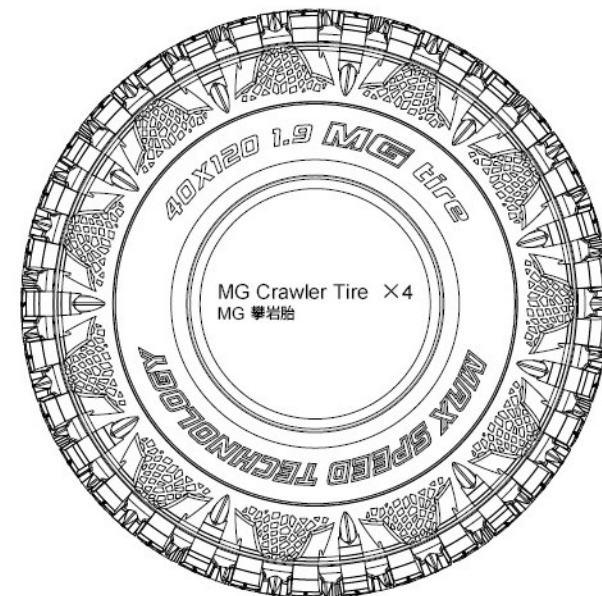


Wheel ×4
輪框

※ Please make the object
as the standard.
請以實物為主。



Inner sponge ×4
內襯

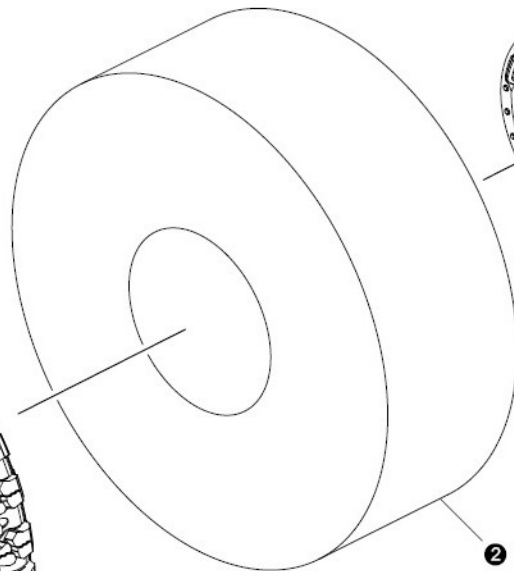


MG Crawler Tire ×4
MG 攀岩胎

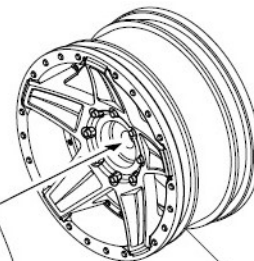
STEP 1 Assemble tire and wheel 胎框組合



① MG Tire



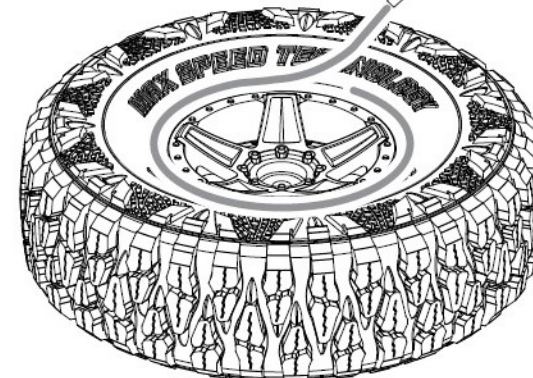
② Inner sponge



③ Wheel

※ Adhesive
上膠固定。

※ Glue on both sides.
兩側都須上膠。

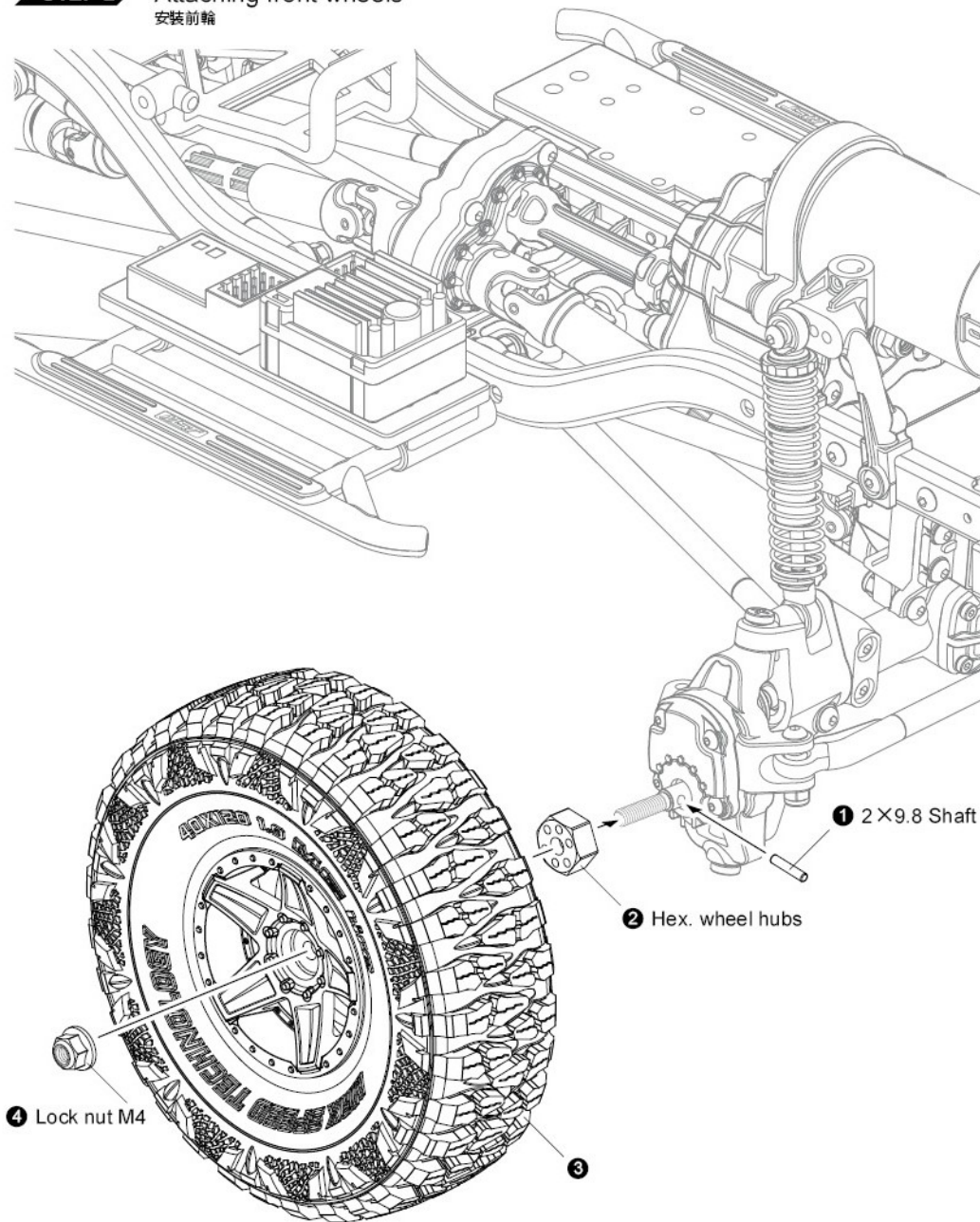


※ Please operate it at ventilated place.
請於通風處進行上膠。

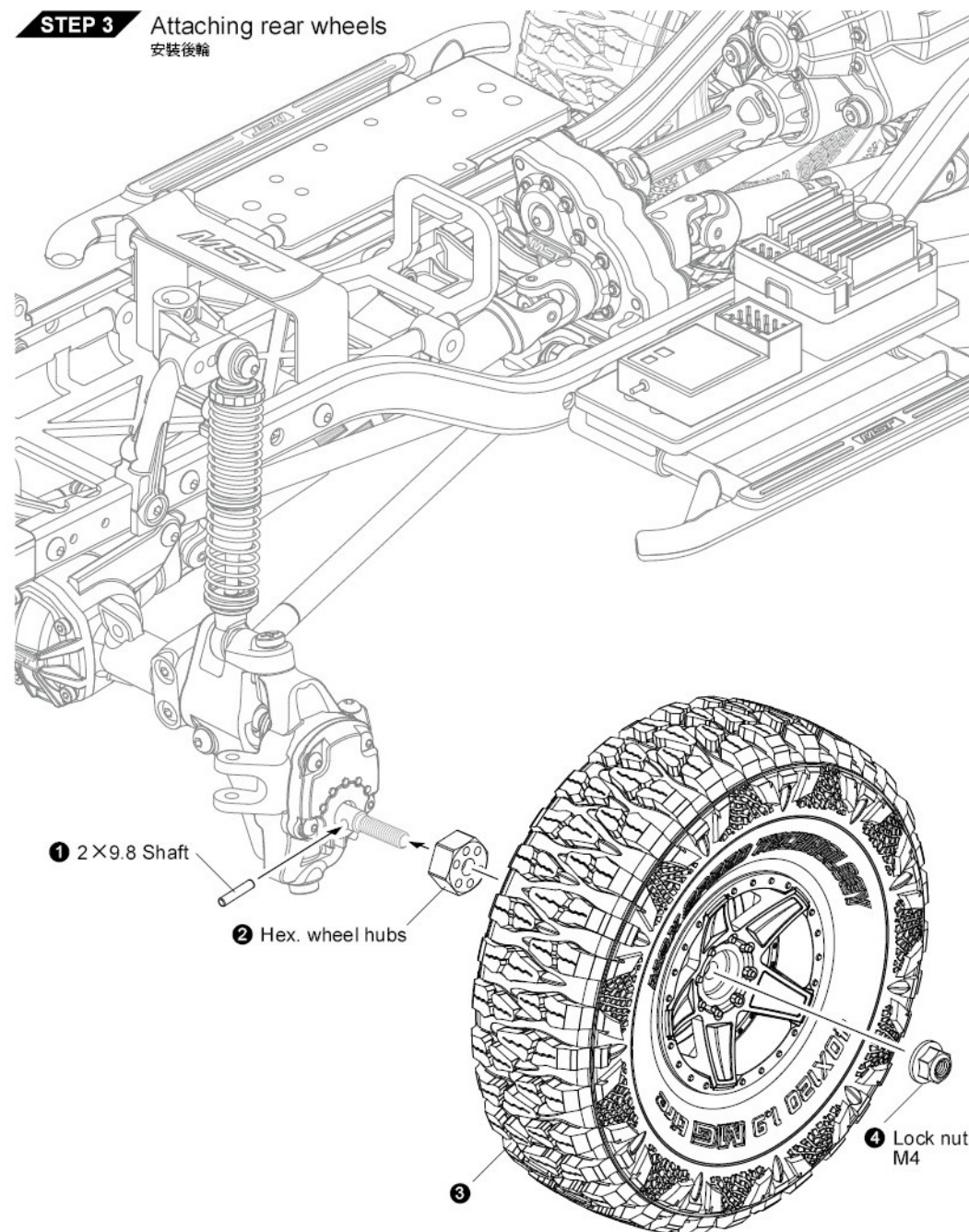
X4
Make 4

STEP 2 Attaching front wheels

安裝前輪

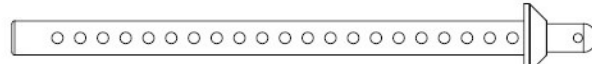
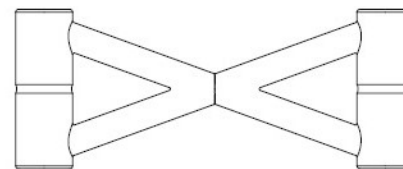
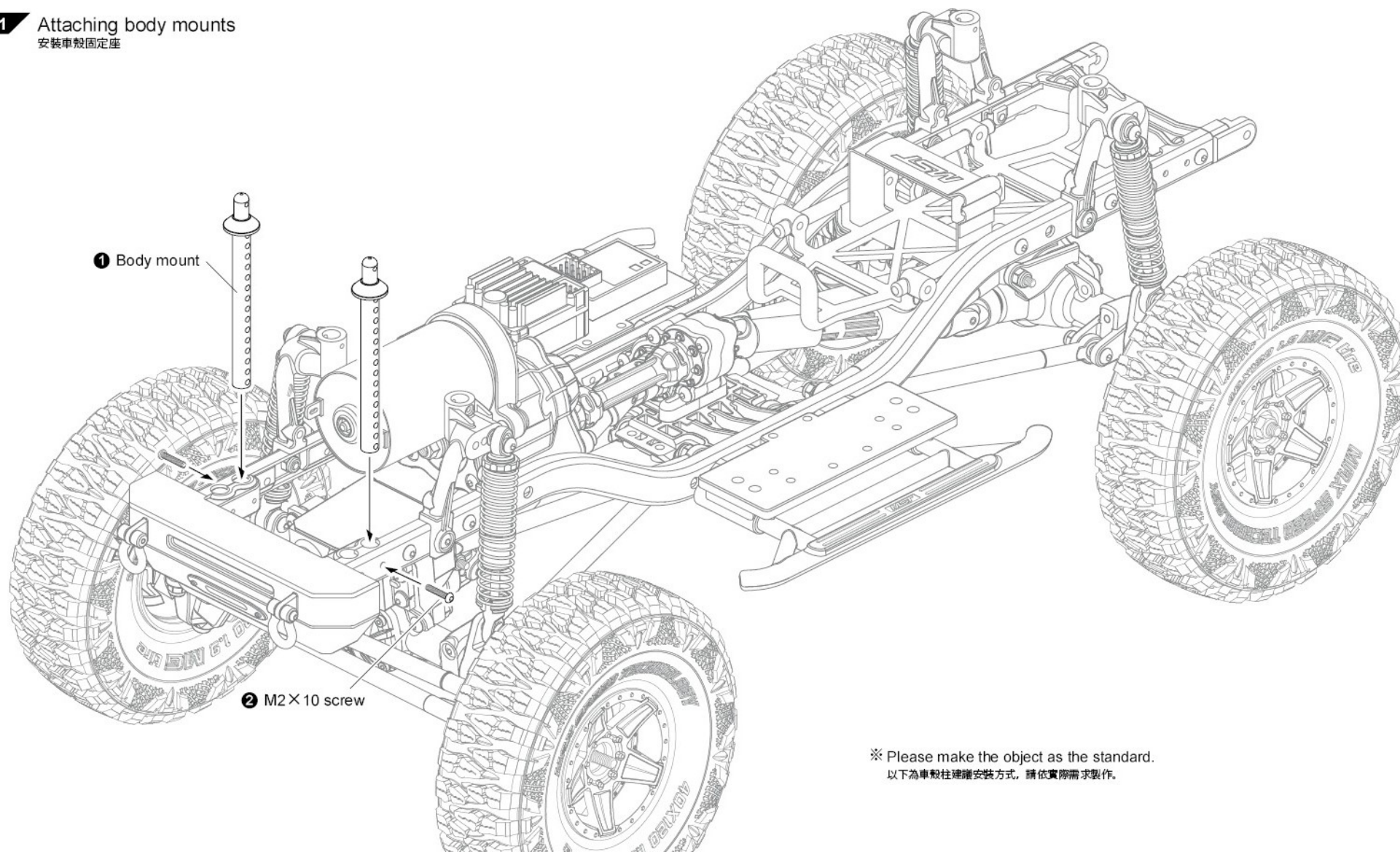
**STEP 3** Attaching rear wheels

安裝後輪



◀ BODY MOUNTS

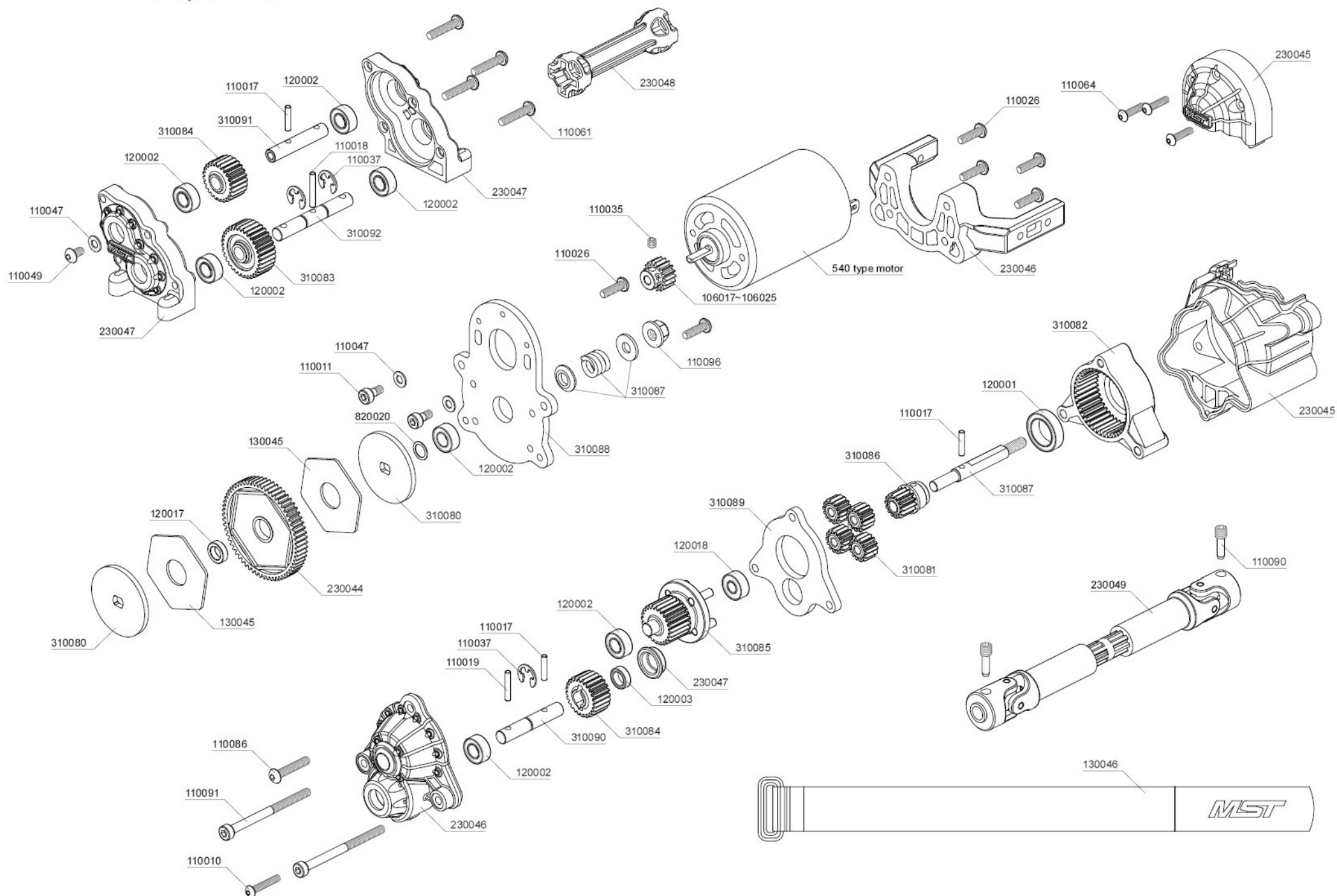
車殼固定座

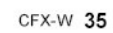
Body mount extension ×2
車殼延伸柱Body mount ×4
車殼支柱Body mount holder ×2
車殼支柱連接架R-clip ×9
R形扣M2×10 Screw ×6
圓頭螺絲**STEP 1** Attaching body mounts
安裝車殼固定座

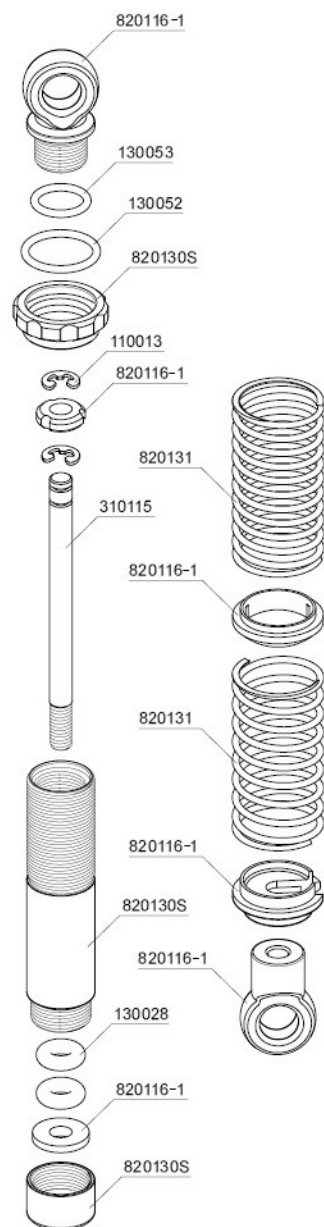
① Body mount

② M2×10 screw

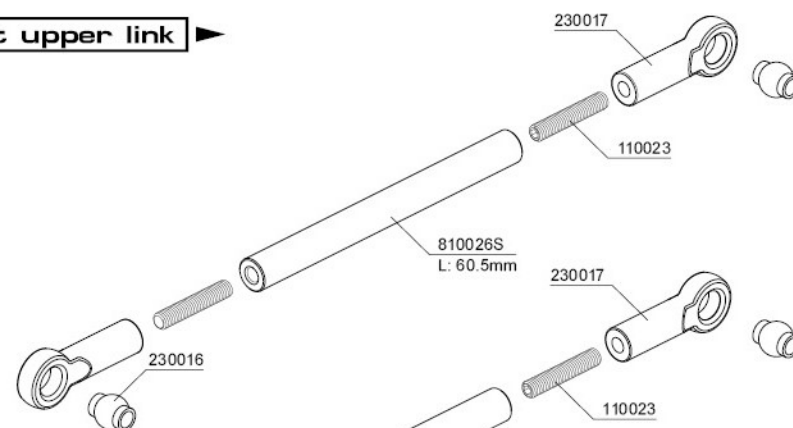
※ Please make the object as the standard.
以下為車殼柱建議安裝方式，請依實際需求製作。



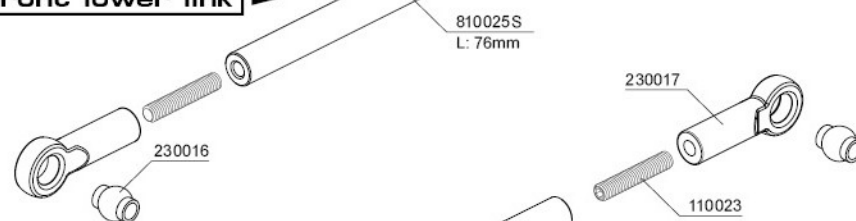




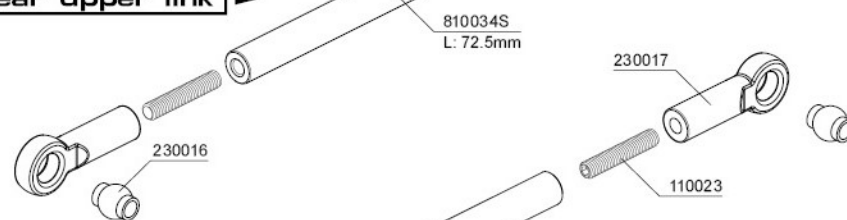
Front upper link



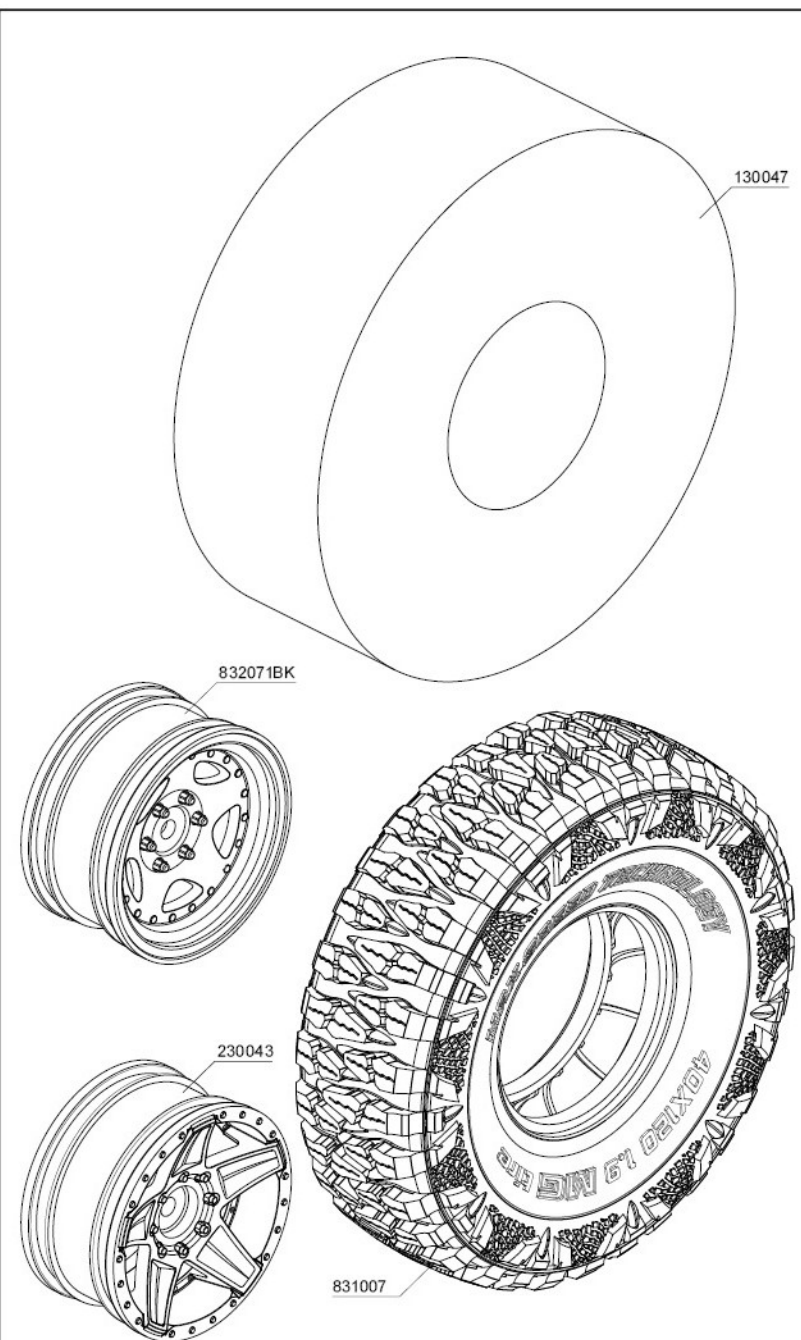
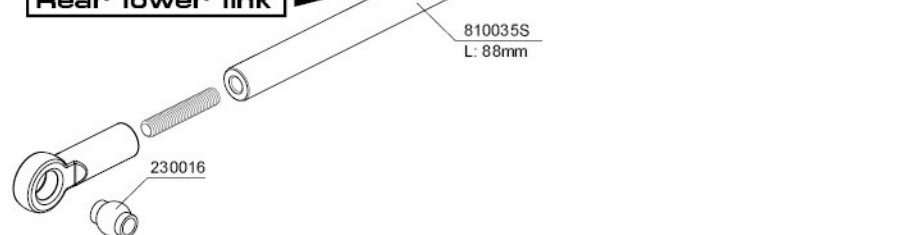
Front lower link

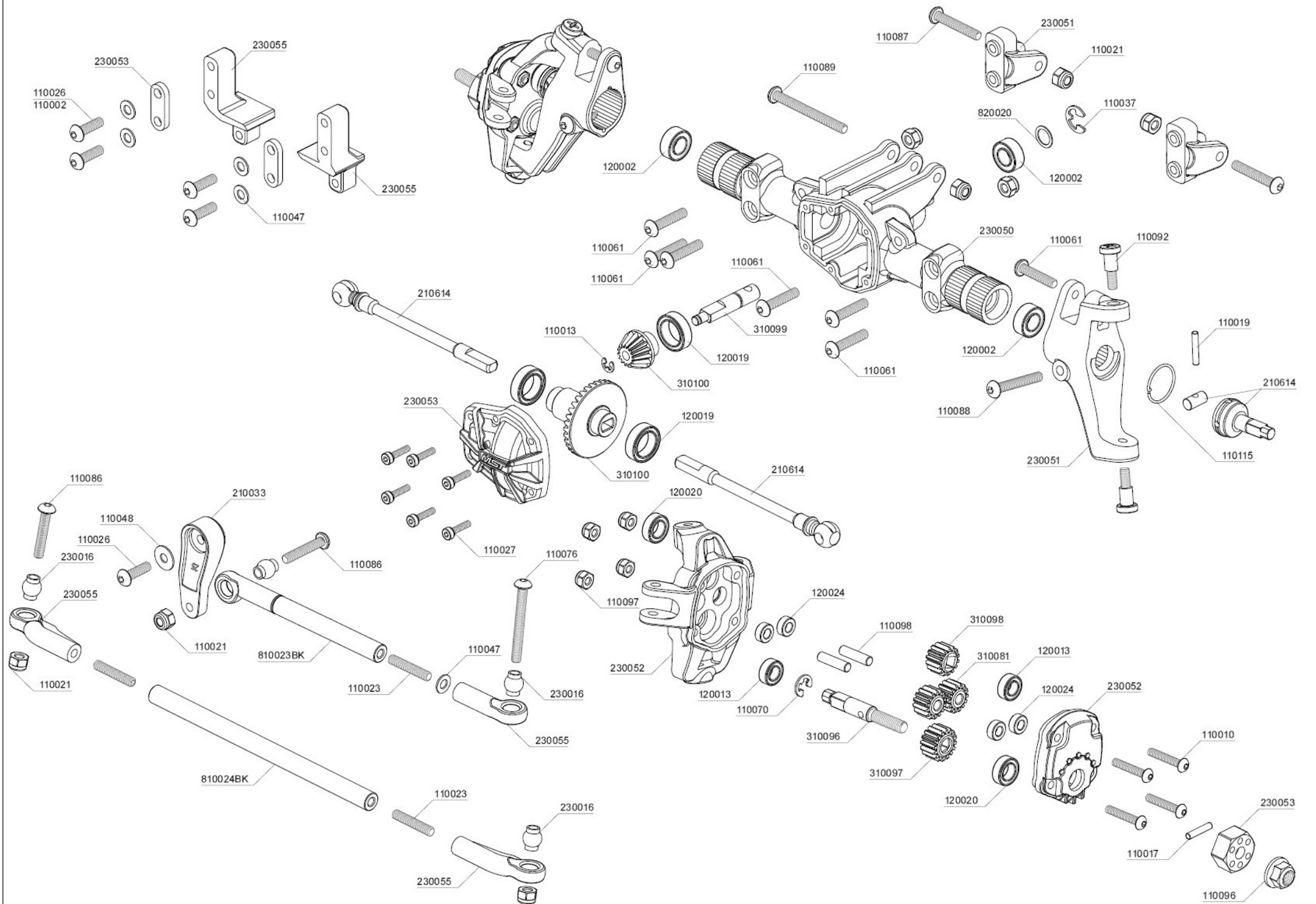


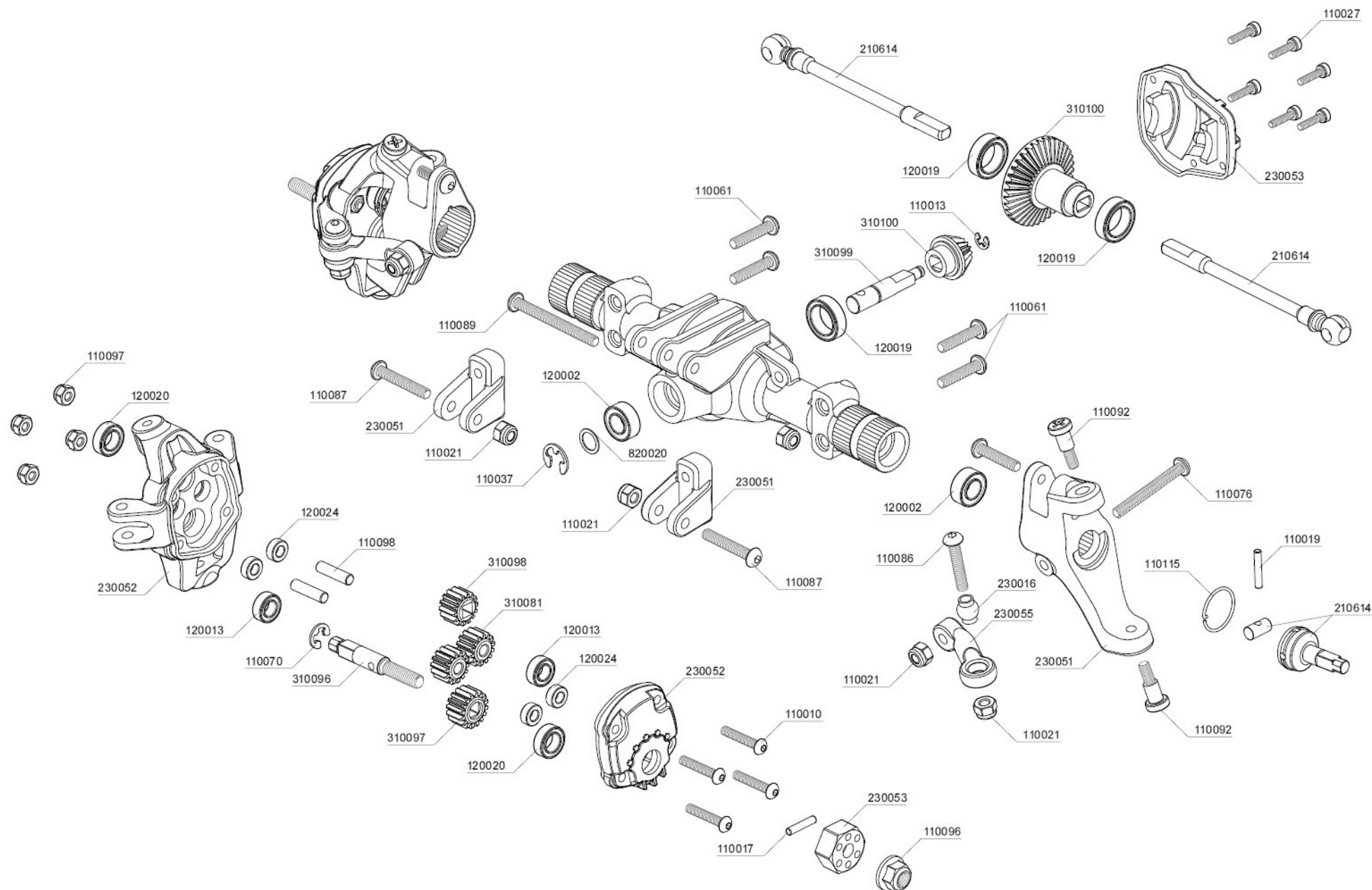
Rear upper link



Rear lower link







PARTS CODE

| | | | | | | | | | |
|--------|-------------------------------------|--------|-----------------------------|--------|---------------------------------|--------|------------------------|----------|---|
| 110001 | Round head screw M3×6 (10) | 110081 | Countersunk screw M3×14 (6) | 130028 | Damper O-ring P3 (blue) (10) | 230056 | Side sliders set | 310100 | Bevel gear set 36-15 |
| 110002 | Round head screw M3×8 (10) | 110084 | Round head screw M2×10 (6) | 130045 | Slipper pad (2) | 230057 | 5.8 Rod ends set | 310115 | Piston rod (4) |
| 110010 | Round head screw M2.5×14 (6) | 110086 | Round head screw M3×16 (6) | 130046 | Velcro strap 16×210mm (2) | 230122 | CFX-W Battery tray set | 810023S | Alum. link 43mm (silver) (2) |
| 110011 | Cap screw M3×6 (6) | 110087 | Round head screw M3×18 (6) | 130047 | Inner sponge 38×122×46 (2) | 230123 | CFX-W Side plates set | 810025S | Alum. link 76mm (silver) (2) |
| 110013 | E-clip 2.0 (10) | 110088 | Round head screw M3×20 (6) | 210033 | Servo horn set (long) (23T/25T) | 230124 | CFX-W Bumper set | 810026S | Alum. link 60.5mm (silver) (2) |
| 110016 | R-clip 6.0 (10) | 110089 | Round head screw M3×30 (6) | 210052 | O-ring 8.5×1 (4) | 310080 | Slipper plate (2) | 810034S | Alum. link 72.5mm (silver) (2) |
| 110017 | Shaft 2×9.8 (10) | 110090 | Shaft screw M4×4×12 (6) | 210053 | O-ring 6×1 (4) | 310081 | Gear B 14T (4) | 810035S | Alum. link 88mm (silver) (2) |
| 110018 | Shaft 2×13.8 (5) | 110091 | Cap screw M3×40 (6) | 210614 | MPA CVD universal shaft set | 310082 | Gear 42T | 810036S | Alum. link 96mm (silver) (2) |
| 110019 | Shaft 2×11.8 (5) | 110092 | King pin screw (4) | 230016 | CMX Ball connector set | 310083 | Gear 32T | 820020 | Spacer 5×7×0.3 (8) |
| 110021 | Lock nut M3 (5) | 110096 | Lock nut M4 (5) | 230020 | CMX Gear box chassis set | 310084 | Gear B 24T | 820116-1 | Damper plastic maintenance set (2) |
| 110023 | Set screw M3×16 (6) | 110097 | Lock nut M2.5 (5) | 230026 | CMX Car body post set | 310085 | Gear A 24T | 820130S | TC80 Alum. damper set (silver) (4) |
| 110025 | Tapping round head screw 2.6×10 (6) | 110098 | Shaft 3×11.8 (8) | 230043 | 648 1.9" wheel (+5) (4) | 310086 | Gear A 14T | 820131 | 30mm TC coil spring set (6) |
| 110026 | Round head screw M3×10 (10) | 110111 | Round head screw M2×12 (6) | 230044 | M06 Spur gear 62T | 310087 | Slipper shaft set | 831007 | MG Crawler tire 40×120-1.9" (medium-40°) (2) |
| 110027 | Cap screw M2×8 (6) | 110115 | G-clip 12.0 (10) | 230045 | CFX Deceleration gear box set | 310088 | CFX Motor mount | 832071BK | Black 236 wheel (+5) (4) |
| 110035 | Set screw M3×3 (6) | 120001 | Ball bearing 10×15 (4) | 230046 | CFX Gear box support | 310089 | Bulkhead plate | | |
| 110037 | E-clip 4.0 (10) | 120002 | Ball bearing 5×10 (4) | 230047 | CFX Transfer case set | 310090 | Gear shaft A | | |
| 110047 | Spacer 3×6×0.5 (8) | 120003 | Ball bearing 5×8 (4) | 230048 | CFX Driveshaft set | 310091 | Gear shaft B | | |
| 110048 | Spacer 3×8×0.5 (8) | 120013 | Ball bearing 4×8×3 (2) | 230049 | CFX-W Driveshaft | 310092 | Gear shaft C | | |
| 110049 | Round head screw M3×5 (10) | 120017 | Bearing 5×8 (4) | 230050 | MPA Axle cover | 310093 | CFX-W Chassis rail | | |
| 110061 | Round head screw M3×14 (6) | 120018 | Ball bearing 4×10×4 (2) | 230051 | MPA C hub carrier set | 310096 | MPA Axle (2) | | |
| 110064 | Round head screw M2.5×10 (6) | 120019 | Ball bearing 8×12 (2) | 230052 | MPA Knuckle set | 310097 | Gear 16T | | |
| 110070 | E-clip 3.0 (10) | 120020 | Ball bearing 5×9×3 (4) | 230053 | Damper stay set | 310098 | Gear C 14T | | |
| 110076 | Round head screw M3×25 (6) | 120024 | Bearing 3×6×2.5 (4) | 230055 | Rod ends set | 310099 | Bevel gear shaft | | |

部品編號

| | | | | | | | | | |
|--------|----------------------|--------|-----------------------|--------|----------------------|--------|--------------|----------|---------------------------------|
| 110001 | 六角半圓頭螺絲 M3×6 (10) | 110081 | 六角沉頭螺絲 M3×14 (6) | 130028 | 阻尼器O環 P3 (藍) (10) | 230056 | 車側踏板組 | 310100 | 傘齒組 36-15 |
| 110002 | 六角半圓頭螺絲 M3×8 (10) | 110084 | 六角半圓頭螺絲 M2×10 (6) | 130045 | 扭限摩擦片 (2) | 230057 | 5.8 拉桿頭組 | 310115 | 避震軸心 (4) |
| 110010 | 六角半圓頭螺絲 M2.5×14 (6) | 110086 | 六角半圓頭螺絲 M3×16 (6) | 130046 | 電池束帶 16×210mm (2) | 230122 | CFX-W 電池盒組 | 810023S | 鋁合金拉桿 43mm (銀) (2) |
| 110011 | 六角有頭螺絲 M3×6 (半牙) (6) | 110087 | 六角半圓頭螺絲 M3×18 (6) | 130047 | 內襯 38×122×46 (2) | 230123 | CFX-W 電裝托盤組 | 810025S | 鋁合金拉桿 76mm (銀) (2) |
| 110013 | E扣 2.0 (10) | 110088 | 六角半圓頭螺絲 M3×20 (6) | 210033 | 伺服機舵片組- 長 (23T/25T) | 230124 | CFX-W 保桿組 | 810026S | 鋁合金拉桿 60.5mm (銀) (2) |
| 110016 | R銷 6.0 (10) | 110089 | 六角半圓頭螺絲 M3×30 (6) | 210052 | O環 8.5×1 (4) | 310080 | 扭限壓盤 | 810034S | 鋁合金拉桿 72.5mm (銀) (2) |
| 110017 | 插銷 2×9.8 (10) | 110090 | 銷釘螺絲 M4×4×12 (6) | 210053 | O環 6×1 (4) | 310081 | 齒輪 B 14T (4) | 810035S | 鋁合金拉桿 88mm (銀) (2) |
| 110018 | 插銷 2×13.8 (5) | 110091 | 六角有頭螺絲 M3×40 (半牙) (6) | 210614 | MPA CVD 傳動軸組 | 310082 | 齒輪 42T | 810036S | 鋁合金拉桿 96mm (銀) (2) |
| 110019 | 插銷 2×11.8 (5) | 110092 | 大王螺絲 (4) | 230016 | CMX 球頭組 | 310083 | 齒輪 32T | 820020 | 墊片 5×7×0.3 (8) |
| 110021 | 防鬆螺帽 M3 (5) | 110096 | 防鬆螺帽 M4 (5) | 230020 | CMX 減速箱底座組 | 310084 | 齒輪 B 24T | 820116-1 | 避震膠件組 (2) |
| 110023 | 六角止付螺絲 M3×16 (6) | 110097 | 防鬆螺帽 M2.5 (5) | 230026 | CMX 車殼支柱組 | 310085 | 齒輪 A 24T | 820130S | TC80 鋁合金避震器組 (銀) (4) |
| 110025 | 自攻六角半圓頭螺絲 2.6×10 (6) | 110098 | 插銷 3×11.8 (8) | 230043 | 648 1.9" 輪框 (+5) (4) | 310086 | 齒輪 A 14T | 820131 | 30mm TC 避震彈簧組 (6) |
| 110026 | 六角半圓頭螺絲 M3×10 (10) | 110111 | 六角半圓頭螺絲 M2×12 (6) | 230044 | M06 大齒盤 62T | 310087 | 扭限軸心組 | 831007 | MG 攀岩胎 40×120-1.9" (中-40°) (2) |
| 110027 | 六角有頭螺絲 M2×8 (6) | 110115 | G扣 12.0 (10) | 230045 | CFX 減速箱組 | 310088 | CFX 馬達座 | 832071BK | 黑色236輪框 (+5) (4) |
| 110035 | 六角止付螺絲 M3×3 (6) | 120001 | 培林 10×15 (4) | 230046 | CFX 減速箱支架組 | 310089 | 減速箱艙板 | | |
| 110037 | E扣 4.0 (10) | 120002 | 培林 5×10 (4) | 230047 | CFX 分動箱組 | 310090 | 齒輪軸心 A | | |
| 110047 | 墊片 3×6×0.5 (8) | 120003 | 培林 5×8 (4) | 230048 | CFX 驅動軸組 | 310091 | 齒輪軸心 B | | |
| 110048 | 墊片 3×8×0.5 (8) | 120013 | 培林 4×8×3 (2) | 230049 | CFX-W 傳動軸 | 310092 | 齒輪軸心 C | | |
| 110049 | 六角半圓頭螺絲 M3×5 (10) | 120017 | 軸承 5×8 (4) | 230050 | MPA 車軸殼 | 310093 | CFX-W 大樑 (2) | | |
| 110061 | 六角半圓頭螺絲 M3×14 (6) | 120018 | 培林 4×10×4 (2) | 230051 | MPA 轉向C座組 | 310096 | MPA 輪軸 (2) | | |
| 110064 | 六角圓頭螺絲 M2.5×10 (6) | 120019 | 培林 8×12 (2) | 230052 | MPA 轉向座組 | 310097 | 齒輪 16T | | |
| 110070 | E扣 3.0 (10) | 120020 | 培林 5×9×3 (4) | 230053 | 避震架組 | 310098 | 齒輪 C 14T | | |
| 110076 | 六角半圓頭螺絲 M3×25 (6) | 120024 | 軸承 3×6×2.5 (4) | 230055 | 拉桿頭組 | 310099 | 傘齒軸 | | |



WWW.RC-MST.COM
[facebook.com/MST.tw]



Max Speed Technology

